



LIST PRICE BOOK

JANUARY 2018 (07-23)

TATUNG ELECTRIC COMPANY OF AMERICA

This Supersedes All Previous Tatum Pricing



TATUNG ELECTRIC CO. OF AMERICA LIST PRICE

EFFECTIVE: January 2018

<i>TABLE OF CONTENTS</i>	PAGE NO.
Table of Contents	1
Cast Iron TEFC 56 Frame	2
Rolled Steel TEFC 56 Frame	3
Stainless Steel TEFC 1/3HP - 10HP	4
Extra Max - EAct - TEFC - 250HP - 500HP (WJ)	5
Extra Max - EAct - ODP - 250HP ~ 500HP (WJ)	6
TS21FN-II Series 460V - TEFC 600HP - 1000HP (WB)	7
Super Max - NEMA Premium - TEFC	8-11
Super Max - NEMA Premium - TEFC - C Face Footed	12
Super Max - NEMA Premium - TEFC - C Face Footless	13
Super Max - NEMA Premium - ODP	14-16
Super Max - IEEE 841 - TEFC Severe Duty	17-20
Explosion Proof WH-EFA NEMA Premium	21-22
Explosion Proof WH-XFA NEMA Premium	23-24
Kiln Duty NEMA Premium	25-26
EAct Efficient JM Frame	27
Super Max - NEMA Premium JM Frame	28
Super Max - NEMA Premium JP Frame	29
Oil Well Pump ODP	30
Oil Well Pump TEFC	31
TS21FN-II Series Medium Voltage - TEFC	32
TS21DN Series Medium Voltage - ODP (600HP - 1000HP)	33
Crusher-Max Series	34-35
Vertical Hollow Shaft Harvest Series - NEMA Premium - TEFC	36-37
Vertical Hollow Shaft Harvest Series - NEMA Premium - WPI	38
Vertical Solid Shaft Harvest Series - NEMA Premium - TEFC	39-40
Accessories	41-55
Model Number Code	56
Warranty Policy	57
Freight Policy	58

Shaded Area - While Stock Lasts

TOTALLY- ENCLOSED FAN-COOLED NEMA 56 FRAME

3 PHASE, 60HZ, 230/460 VOLT*, NEMA DESIGN B

CLASS F INSULATION, 40 DEGREE AMBIENT, 1.15 S.F.

HORIZONTAL FOOT MOUNTED



HP	RPM	FRAME	MODEL NO.	F/L AMPS	NOM. EFF.	BEARINGS		WEIGHT LBS.	LIST PRICE
						Drive End	O. D. End		
1/2	3600	56	TB1P22FFA5	1.7/0.85	69.0	6204ZZ	6204ZZ	36	\$345
	1800	56	TB1P24FFA5	1.6/0.80	73.5	6204ZZ	6204ZZ	36	\$345
	1200	56	TB1P26FFA5	2.2/1.1	71.0	6204ZZ	6204ZZ	37	\$377
3/4	3600	56	TB3P42FFA5	2.3/1.15	72.5	6204ZZ	6204ZZ	36	\$366
	1800	56	TB3P44FFA5	2.3/1.15	77.0	6204ZZ	6204ZZ	37	\$366
1	3600	56	TB0012FFA5	3.0/1.5	73.0	6204ZZ	6204ZZ	36	\$377
	1800	56	TB0014FFA5	3.0/1.5	77.0	6204ZZ	6204ZZ	38	\$377

C-FACE WITH FEET

HP	RPM	FRAME	MODEL NO.	F/L AMPS	NOM. EFF.	BEARINGS		WEIGHT LBS.	LIST PRICE
						Drive End	O. D. End		
1/2	3600	56C	TB1P22FBA5	1.7/0.85	69.0	6204ZZ	6204ZZ	38	\$405
	1800	56C	TB1P24FBA5	1.6/0.80	73.5	6204ZZ	6204ZZ	39	\$401
	1200	56C	TB1P26FBA5	2.2/1.1	71.0	6204ZZ	6204ZZ	40	\$437
3/4	3600	56C	TB3P42FBA5	2.3/1.15	72.5	6204ZZ	6204ZZ	38	\$424
	1800	56C	TB3P44FBA5	2.3/1.15	77.0	6204ZZ	6204ZZ	41	\$421
1	3600	56C	TB0012FBA5	3.0/1.5	73.0	6204ZZ	6204ZZ	38	\$437
	1800	56C	TB0014FBA5	3.0/1.5	77.0	6204ZZ	6204ZZ	40	\$434

C-FACE "FOOTLESS"

HP	RPM	FRAME	MODEL NO.	F/L AMPS	NOM. EFF.	BEARINGS		WEIGHT LBS.	LIST PRICE
						Drive End	O. D. End		
1/2	3600	56C	TB1P22FCA5	1.7/0.85	69.0	6204ZZ	6204ZZ	38	\$377
	1800	56C	TB1P24FCA5	1.6/0.80	73.5	6204ZZ	6204ZZ	38	\$377
	1200	56C	TB1P26FCA5	2.2/1.1	71.0	6204ZZ	6204ZZ	39	\$401
3/4	3600	56C	TB3P42FCA5	2.3/1.15	72.5	6204ZZ	6204ZZ	38	\$388
	1800	56C	TB3P44FCA5	2.3/1.15	77.0	6204ZZ	6204ZZ	40	\$388
1	3600	56C	TB0012FCA5	3.0/1.5	73.0	6204ZZ	6204ZZ	37	\$401
	1800	56C	TB0014FCA5	3.0/1.5	77.0	6204ZZ	6204ZZ	40	\$401

For 575/3/60, please change model number and amps; balance including price remain same as 230/460/3/60.

*USABLE ON 208 VOLT

Weights are estimates.

TOTALLY- ENCLOSED FAN-COOLED NEMA 56 FRAME

NEMA Premium Eff. for 1HP & above

3 PHASE, 60HZ, 230/460 VOLT, NEMA DESIGN B, INVERTER DUTY

CLASS F INSULATION - 40 DEGREE AMBIENT - 1.15 S.F.



HORIZONTAL FOOT MOUNTED

HP	RPM	FRAME	MODEL NO.	F/L AMPS	NOM. EFF.	BEARINGS		WEIGHT LBS.	LIST PRICE
						Drive End	O. D. End		
1/3	3600	56	SB1P32FFA5	0.50	74.0	6205-2RS	6203-2RS	23	\$347
1/3	1800	56	SB1P34FAA5	0.65	78.5	6205-2RS	6203-2RS	26	\$351
1/3	1200	56	SB1P36FAA5	0.68	74.7	6205-2RS	6203-2RS	27	\$369
1/2	3600	56	SB1P22FFA5	0.75	77.0	6205-2RS	6203-2RS	27	\$384
1/2	1800	56	SB1P24FFA5	0.80	81.5	6205-2RS	6203-2RS	29	\$362
3/4	3600	56	SB3P42FFA5	1.00	78.5	6205-2RS	6203-2RS	29	\$403
3/4	1800	56	SB3P44FFA5	1.15	82.5	6205-2RS	6203-2RS	33	\$388
1	3600	56	SH0012FFA5	1.30	80.0	6205-2RS	6203-2RS	33	\$463
1	1800	56	SH0014FFA5	1.60	85.5	6205-2RS	6203-2RS	39	\$448
1 1/2	3600	56	SH1Y52FFA5	1.90	84.0	6205-2RS	6203-2RS	36	\$372
1 1/2	1800	56	SH1Y54FFA5	2.20	86.5	6205-2RS	6203-2RS	41	\$384
2	3600	56	SH0022FFA5	2.50	85.5	6205-2RS	6203-2RS	39	\$425
2	1800	56	SH0024FFA5	2.80	86.5	6205-2RS	6203-2RS	50	\$425

C-FACE WITH FEET

HP	RPM	FRAME	MODEL NO.	F/L AMPS	NOM. EFF.	BEARINGS		WEIGHT LBS.	LIST PRICE
						Drive End	O. D. End		
1/3	3600	56C	SB1P32FBA5	0.50	74.0	6203-2RS	6203-2RS	23	\$369
1/3	1800	56C	SB1P34FBA5	0.65	78.5	6203-2RS	6203-2RS	26	\$377
1/3	1200	56C	SB1P36FBA5	0.68	74.7	6203-2RS	6203-2RS	27	\$396
1/2	3600	56C	SB1P22FBA5	0.75	77.0	6203-2RS	6203-2RS	27	\$410
1/2	1800	56C	SB1P24FBA5	0.80	81.5	6203-2RS	6203-2RS	29	\$392
3/4	3600	56C	SB3P42FBA5	1.00	78.5	6203-2RS	6203-2RS	29	\$425
3/4	1800	56C	SB3P44FBA5	1.15	82.5	6203-2RS	6203-2RS	33	\$422
1	3600	56C	SH0012FBA5	1.30	80.0	6203-2RS	6203-2RS	33	\$500
1	1800	56C	SH0014FBA5	1.60	85.5	6203-2RS	6203-2RS	39	\$485
1 1/2	3600	56C	SH1Y52FBA5	1.90	84.0	6203-2RS	6203-2RS	36	\$406
1 1/2	1800	56C	SH1Y54FBA5	2.20	86.5	6203-2RS	6203-2RS	41	\$422
2	3600	56C	SH0022FBA5	2.50	85.5	6203-2RS	6203-2RS	39	\$469
2	1800	56C	SH0024FBA5	2.80	86.5	6203-2RS	6203-2RS	50	\$494

C-FACE "FOOTLESS"

HP	RPM	FRAME	MODEL NO.	F/L AMPS	NOM. EFF.	BEARINGS		WEIGHT LBS.	LIST PRICE
						Drive End	O. D. End		
1/3	3600	56C	SB1P32FCA5	0.50	74.0	6203-2RS	6203-2RS	22.5	\$369
1/3	1800	56C	SB1P34FCA5	0.65	78.5	6203-2RS	6203-2RS	22.5	\$377
1/3	1200	56C	SB1P36FCA5	0.68	74.7	6203-2RS	6203-2RS	26.5	\$396
1/2	3600	56C	SB1P22FCA5	0.75	77.0	6203-2RS	6203-2RS	26.5	\$392
1/2	1800	56C	SB1P24FCA5	0.80	81.5	6203-2RS	6203-2RS	28.5	\$369
3/4	3600	56C	SB3P42FCA5	1.00	78.5	6203-2RS	6203-2RS	28.5	\$407
3/4	1800	56C	SB3P44FCA5	1.15	82.5	6203-2RS	6203-2RS	32.5	\$396
1	3600	56C	SH0012FCA5	1.30	80.0	6203-2RS	6203-2RS	32.5	\$466
1	1800	56C	SH0014FCA5	1.60	85.5	6203-2RS	6203-2RS	38.5	\$470
1 1/2	3600	56C	SH1Y52FCA5	1.90	84.0	6203-2RS	6203-2RS	35.5	\$375
1 1/2	1800	56C	SH1Y54FCA5	2.20	86.5	6203-2RS	6203-2RS	40.5	\$388
2	3600	56C	SH0022FCA5	2.50	85.5	6203-2RS	6203-2RS	38.5	\$447
2	1800	56C	SH0024FCA5	2.80	86.5	6203-2RS	6203-2RS	49.5	\$463

Weights are estimates.

Effective: 2018/07/23

For 575/3/60, please change model number and amps; balance including price remain same as 230/460/3/60.

STAINLESS STEEL SERIES TEFC

NEMA PREMIUM EFFICIENCY *, FRAMES: 56C - 215TC

STAINLESS STEEL FRAME, 3 PHASE, 60HZ, 208-230/460 VOLT, 1.15 S.F., INVERTER DUTY

CLASS F INSULATION, NEMA DESIGN B, CONTINUOUS DUTY, 40 DEGREE C AMBIENT



HP	RPM	FRAME	MODEL NO.	230V F/L AMPS	NOM. EFF.	BEARINGS		WEIGHT LBS.	LIST PRICE
						Drive End	O. D. End		
1/3	1800	56C	AB1P34FBA5	1.08	76.0	6205	6205	34	\$854
	3600	56C	AB1P22FBA5	1.54	74.0	6205	6205	34	\$881
1/2	1800	56C	AB1P24FBA5	1.64	77.0	6205	6205	34	\$884
	1200	56C	AB1P26FBA5	1.92	74.0	6205	6205	34	\$948
3/4	3600	56C	AB3P42FBA5	2.24	75.5	6205	6205	34	\$910
	1800	56C	AB3P44FBA5	2.44	78.0	6205	6205	34	\$903
	1200	56HC	AB3P46FBA5	2.72	77.0	6205	6205	48	\$989
1	3600	56HC	AH0012FBA5	2.90	77.0	6205	6205	48	\$951
	1800	56HC	AH0014FBA5	2.92	85.5	6205	6205	48	\$951
	1200	56HC	AH0016FBA5	3.34	82.5	6205	6205	48	\$1,049
	1800	143TC	AH0014FBA	2.92	85.5	6205	6205	41	\$985
	1200	145TC	AH0016FBA	3.34	82.5	6205	6205	46	\$1,049
1.5	3600	56HC	AH1Y52FBA5	3.98	84.0	6205	6205	48	\$797
	3600	143TC	AH1Y52FBA	3.98	84.0	6205	6205	41	\$800
	1800	56HC	AH1Y54FBA5	4.12	86.5	6205	6205	48	\$812
	1800	145TC	AH1Y54FBA	4.12	86.5	6205	6205	46	\$818
2	3600	56HC	AH0022FBA5	5.10	85.5	6205	6205	48	\$934
	3600	145TC	AH0022FBA	5.10	85.5	6205	6205	46	\$1,030
	1800	56HC	AH0024FBA5	5.42	86.5	6205	6205	48	\$946
	1800	145TC	AH0024FBA	5.42	86.5	6205	6205	46	\$1,036
3	3600	145TC	AH0032FBAX	7.56	86.5	6205	6205	46	\$1,573
	3600	182TC	AH0032FBA	7.46	86.5	6306	6306	84	\$1,573
	1800	182TC	AH0034FBA	7.84	89.5	6306	6306	84	\$1,528
5	3600	184TC	AH0052FBA	12.02	88.5	6306	6306	92	\$1,660
	1800	184TC	AH0054FBA	13.08	89.5	6306	6306	93	\$1,600
7.5	3600	213TC	AH7Y52FBA	17.64	89.5	6208	6208	148	\$2,242
	1800	213TC	AH7Y54FBA	18.24	91.7	6208	6208	148	\$2,113
10	3600	215TC	AH0102FBA	23.06	90.2	6208	6208	180	\$2,412
	1800	215TC	AH0104FBA	24.32	91.7	6208	6208	180	\$2,310

Effective: 2018/07/23

* NEMA Premium Efficiency is only for 1HP and above.

The above are C-Face Footed (FBA) motors, C-Face Footless (FCA) are available at the same price.

Weights are estimates.

EXTRA - MAX SERIES TEFC

ENERGY EFFICIENT (EISA 2007) FRAMES: 449TS - N5808UZ

CAST IRON FRAME, 3-PHASE, 60HZ, 460 VOLT, 1.15 S.F., INVERTER DUTY

CLASS F INSULATION, NEMA DESIGN B, CONTINUOUS DUTY, 40 DEGREE C AMBIENT



HP	RPM	FRAME	MODEL NO.	F/L AMPS	NOM. EFF.	BEARINGS		WEIGHT LBS.	LIST PRICE
						Drive End	O. D. End		
250	3600	449TS	WJ2502FFB	278	95.4	6313C3	6313C3	2852	\$29,297
	1800	449TZ	WJ2504FFB	280	95.0	NU320	6318	2974	\$27,344
	1200	449TZ	WJ2506FFB	294	95.0	NU320	6318	2974	\$32,422
300	3600	N5007/9S	WJ3002FFBK	330	95.4	6315C3	6315C3	3482	\$35,156
	1800	449TZ	WJ3004FFB	330	95.4	NU320	6318	2974	\$31,250
	1200	N5007/9UZ	WJ3006FFBK	350	95.0	NU224C3	6222	3520	\$37,891
350	3600	N5007/9S	WJ3502FFBK	382	95.4	6315C3	6315C3	4405	\$39,063
	1800	N5007/9UZ	WJ3504FFBK	390	95.4	NU224C3	6222	3520	\$35,938
	1200	N5007/9UZ	WJ3506FFBK	410	95.0	NU224C3	6222	4405	\$41,797
400	3600	N5007/9S	WJ4002FFBK	438	95.4	6315C3	6315C3	4405	\$42,969
	1800	N5007/9UZ	WJ4004FFBK	445	95.4	NU224C3	6222	4405	\$39,844
	1200	N5007/9UZ	WJ4006FFBK	470	95.0	NU224C3	6222	4405	\$45,703
450	3600	N5807/8S	WJ4502FFBK	490	95.4	6218C3	6218C3	5400	\$50,781
	1800	N5007/9UZ	WJ4504FFBK	500	95.4	NU224C3	6222	4405	\$43,750
	1200	N5807/8UZ	WJ4506FFBK	525	95.0	NU226C3	6224C3	5400	\$54,688
500	3600	N5807/8S	WJ5002FFBK	545	95.4	6218C3	6218C3	5400	\$53,516
	1800	N5807/8UZ	WJ5004FFBK	553	95.4	NU226C3	6224C3	5400	\$50,000
	1200	N5807/8UZ	WJ5006FFBK	584	95.0	NU226C3	6224C3	5400	\$57,813

For 575/3/60, change model number and amps; other items including price remain the same as 460/3/60.
Weights are estimates.

EXTRA - MAX SERIES ODP

ENERGY EFFICIENT (EISA 2007) FRAMES: 445TS - 5807N

CAST IRON FRAME, 3-PHASE, 60HZ, 460 VOLT, 1.15 S.F., INVERTER DUTY

CLASS F INSULATION, NEMA DESIGN B, CONTINUOUS DUTY, 40 DEGREE C AMBIENT



HP	RPM	FRAME	MODEL NO.	F/L AMPS	NOM. EFF.	BEARINGS		WEIGHT LBS.	LIST PRICE
						Drive End	O. D. End		
250	3600	445TS	WJ2502DFB	285	94.5	6313C3	6313C3	1700	\$14,453
	1800	447T	WJ2504DFB	285	95.4	6318	6318	2100	\$14,453
	1200	449T	WJ2506DFB	300	95.4	6318	6318	2300	\$19,531
300	3600	447TS	WJ3002DFB	338	95.0	6313C3	6313C3	1950	\$17,188
	1800	447T	WJ3004DFB	341	95.4	6318	6318	2300	\$16,406
	1200	505T	WJ3006DFB	358	95.4	6320	6320	2500	\$23,047
350	3600	449TS	WJ3502DFB	390	95.0	6313C3	6313C3	2200	\$21,875
	1800	449T	WJ3504DFB	398	95.4	6318	6318	2300	\$20,703
	1200	5007N	WJ3506DFB	412	95.4	6224C3	6224C3	3400	\$26,172
400	3600	449TS	WJ4002DFB	445	95.4	6313C3	6313C3	2200	\$24,219
	1800	449T	WJ4004DFB	455	95.4	6318	6318	2300	\$22,656
	1200	5007N	WJ4006DFB	505	95.4	6224C3	6224C3	3400	\$28,125
450	3600	449TS	WJ4502DFB	495	95.8	6313C3	6313C3	2200	\$26,172
	1800	505T	WJ4504DFB	505	95.8	6320	6320	2500	\$27,344
	1200	5807N	WJ4506DFB	525	95.8	6224C3	6224C3	3500	\$35,156
500	3600	5007NS	WJ5002DFB	545	95.8	6314C3	6314C3	3250	\$33,594
	1800	505T	WJ5004DFB	560	95.8	6320	6320	2500	\$29,688
	1200	5807N	WJ5006DFB	583	95.8	6224C3	6224C3	3500	\$37,109

For 575/3/60, change model number and amps; other items including price remain the same as 460/3/60.

Weights are estimates.

TS21F-N II SERIES 460 VOLT - TEFC

FRAMES: N5807 - N6310

NEMA DESIGN B, CONTINUOUS DUTY

3 PHASE, 60HZ, 460 VOLT, 1.15 S.F., CLASS F INSULATION

40 DEGREE C AMBIENT, INVERTER DUTY



HP	RPM	FRAME	MODEL NO.	F/L AMPS	NOM. EFF.	BEARINGS		WEIGHT LBS.	LIST PRICE
						Drive End	O. D. End		
600	3600	N5807/8S	WB6002FFBU	652	95.8	6218C3	6218C3	5550	\$54,478
	3600	N5807/8S*	WB6002FFBU	652	95.8	6218C3	6218C3	5550	\$68,097
	1800	N5807/8	WB6004FFBU	673	96.0	6224C3	6224C3	5500	\$49,254
	1800	N5807/8*	WB6004FFBU	673	96.0	6224C3	6224C3	5500	\$61,567
	1200	N5809/10	WB6006FFBU	698	95.8	6224C3	6224C3	6700	\$58,209
	900	N6308/10	WB6008FFBU	720	95.8	6224C3	6224C3	9100	\$70,896
700	3600	N5809/10S	WB7002FFBU	760	95.8	6218C3	6218C3	6400	\$58,209
	3600	N5809/10S*	WB7002FFBU	760	95.8	6218C3	6218C3	6400	\$72,761
	1800	N5809/10	WB7004FFBU	785	96.0	6224C3	6224C3	6700	\$52,985
	1800	N5809/10*	WB7004FFBU	785	96.0	6224C3	6224C3	6700	\$66,231
	1200	N6308/10	WB7004FFBU	803	96.0	6224C3	6224C3	9100	\$69,030
	900	N6808/10	WB7006FFBU	833	96.0	6226C3	6224C3	10650	\$100,746
800	3600	N6308/10S	WB8002FFBU	862	96.0	6218C3	6218C3	8450	\$72,761
	1800	N5809/10	WB8004FFBU	892	96.0	6224C3	6224C3	6700	\$67,164
	1800	N5809/10*	WB8004FFBU	892	96.0	6224C3	6224C3	6700	\$83,955
	1200	N6308/10	WB8006FFBU	918	96.0	6224C3	6224C3	9100	\$78,358
	900	N6808/10	WB8008FFBU	946	96.0	6226C3	6224C3	10650	\$104,478
900	3600	N6308/10S	WB8002FFBU	970	96.0	6218C3	6218C3	8450	\$78,358
	1800	N6308/10	WB8004FFBU	1003	96.0	6224C3	6224C3	9100	\$70,896
	1800	N6308/10*	WB8006FFBU	1003	96.0	6224C3	6224C3	9100	\$88,619
	1200	N6808/10	WB8008FFBU	1033	96.0	6226C3	6224C3	10650	\$100,746
1000	3600	N6308/10S	WB8004FFBU	1078	96.0	6218C3	6218C3	8450	\$100,746
	1800	N6308/10	WB8004FFBU	1108	96.0	6224C3	6224C3	9100	\$90,672
	1800	N6308/10*	WB8006FFBU	1108	96.0	6224C3	6224C3	9100	\$113,340

Weights are estimates.

PLEASE SPECIFY ROTATION FOR 2 POLE MOTORS ABOVE NEMA FRAME

Note: All frame sizes are suitable for dual mounting.

* = Copper Bar Rotor

NEMA PREMIUM EFFICIENCY, FRAMES: 143T - N5808

CAST IRON FRAME, 3 PHASE, 60HZ, 230/460 VOLT, 1.15 S.F., INVERTER DUTY

CLASS F INSULATION, NEMA DESIGN B, CONTINUOUS DUTY, 40 DEGREE C AMBIENT



HP	RPM	FRAME	MODEL NO.	230V F/L AMPS	NOM. EFF.	BEARINGS		WEIGHT LBS.	LIST PRICE
						Drive End	O. D. End		
3/4	1200	143T	WH3P46FFAC	2.6	84.0	6205ZZ	6205ZZ	52	\$541
1	1800	143T	WH0014FFAC	2.8	86.5	6205ZZ	6205ZZ	52	\$460
	1200	145T	WH0016FFAC	3.4	84.0	6205ZZ	6205ZZ	58	\$516
	900	182T	WH0018FFAC	3.8	84.0	6207ZZ	6206ZZ	94	\$841
	3600	143T	WH1Y52FFAC	3.8	85.5	6205ZZ	6205ZZ	52	\$480
1.5	1800	145T	WH1Y54FFAC	4.2	87.5	6205ZZ	6205ZZ	58	\$519
	1200	182T	WH1Y56FFAC	4.8	87.5	6207ZZ	6206ZZ	96	\$626
	900	184T	WH1Y58FFAC	5.6	84.0	6207ZZ	6206ZZ	99	\$1,186
2	3600	145T	WH0022FFAC	5.0	86.5	6205ZZ	6205ZZ	58	\$563
	1800	145T	WH0024FFAC	5.6	87.5	6205ZZ	6205ZZ	58	\$567
	1200	184T	WH0026FFAC	5.8	88.5	6207ZZ	6206ZZ	109	\$695
	900	213T	WH0028FFAC	6.2	85.5	6308ZZ	6208ZZ	168	\$1,350
3	3600	182T	WH0032FFAC	7.2	88.5	6207ZZ	6206ZZ	96	\$650
	1800	182T	WH0034FFAC	7.8	90.2	6207ZZ	6206ZZ	96	\$647
	1200	213T	WH0036FFAC	8.6	89.5	6308ZZ	6208ZZ	168	\$869
	900	215T	WH0038FFAC	9.2	85.5	6308ZZ	6208ZZ	192	\$1,684
5	3600	184T	WH0052FFAC	11.6	90.2	6207ZZ	6206ZZ	106	\$791
	1800	184T	WH0054FFAC	12.8	90.2	6207ZZ	6206ZZ	106	\$739
	1200	215T	WH0056FFAC	13.8	89.5	6308ZZ	6208ZZ	192	\$1,297
	900	254T	WH0058FFAC	15.0	89.5	6310ZZ	6208ZZ	290	\$2,359
7.5	3600	213T	WH7Y52FFAC	18.0	90.2	6308ZZ	6208ZZ	168	\$1,023
	1800	213T	WH7Y54FFAC	18.2	91.7	6308ZZ	6208ZZ	168	\$988
	1200	254T	WH7Y56FFAC	20.2	91.7	6310ZZ	6208ZZ	290	\$1,749
	900	256T	WH7Y58FFAC	22.6	89.5	6310ZZ	6208ZZ	325	\$2,984
10	3600	215T	WH0102FFAC	23.0	91.7	6308ZZ	6208ZZ	188	\$1,218
	1800	215T	WH0104FFAC	23.8	91.7	6308ZZ	6208ZZ	192	\$1,186
	1200	256T	WH0106FFAC	26.4	91.7	6310ZZ	6208ZZ	325	\$2,184
	900	284T	WH0108FFA	30.0	91.0	6310ZZ	6210ZZ	445	\$3,550
15	3600	254T	WH0152FFAC	34.6	91.0	6310ZZ	6208ZZ	290	\$1,721
	1800	254T	WH0154FFAC	37.0	92.4	6310ZZ	6208ZZ	290	\$1,698
	1200	284T	WH0156FFA	38.8	92.4	6310ZZ	6210ZZ	445	\$2,934
	900	286T	WH0158FFA	42.4	91.7	6310ZZ	6210ZZ	475	\$5,103

For 575/3/60, change model number and amps; other items including price remain the same as 460/3/60.

MODELS ENDING IN "FFA" / "FFAC" ARE USABLE ON 200 VOLT

MODELS ENDING IN FFAC COME WITH CAST IRON FAN COVER AND T-BOX

F/L Amps are at 230V except for 200HP and above, which are at 460V

Weights are estimates.

SUPER - MAX SERIES TEFC

NEMA PREMIUM EFFICIENCY, FRAMES: 143T - N5808

CAST IRON FRAME, 3 PHASE, 60HZ, 230/460 VOLT, 1.15 S.F., INVERTER DUTY

CLASS F INSULATION, NEMA DESIGN B, CONTINUOUS DUTY, 40 DEGREE C AMBIENT



HP	RPM	FRAME	MODEL NO.	230V F/L AMPS	NOM. EFF.	BEARINGS		WEIGHT LBS.	LIST PRICE
						Drive End	O. D. End		
20	3600	256T	WH0202FFAC	46.0	91.0	6310ZZ	6208ZZ	325	\$2,222
	1800	256T	WH0204FFAC	49.0	93.0	6310ZZ	6208ZZ	325	\$2,130
	1200	286T	WH0206FFA	51.0	92.4	6310ZZ	6210ZZ	475	\$3,634
	900	324T	WH0208FFA	56.6	91.7	6312	6212	650	\$5,900
25	3600	284TS	WH0252FFA	57.4	91.7	6310ZZ	6210ZZ	430	\$2,722
	1800	284T	WH0254FFA	60.0	93.6	6310ZZ	6210ZZ	445	\$2,591
	1200	324T	WH0256FFA	60.4	93.0	6312	6212	650	\$4,234
	900	326T	WH0258FFA	71.0	91.7	6312	6212	716	\$6,784
30	3600	286TS	WH0302FFA	68.2	92.4	6310ZZ	6210ZZ	465	\$3,222
	1800	286T	WH0304FFA	72.0	93.6	6310ZZ	6210ZZ	475	\$3,050
	1200	326T	WH0306FFA	72.0	93.0	6312	6212	716	\$5,047
	900	364T	WH0308FFA	72.0	92.4	6315	6312	850	\$8,216
	900	364/5T	WH0308FFAN	83.2	91.7	6314Z/C3	6314Z/C3	836	\$8,216
40	3600	324TS	WH0402FFA	93.4	93.0	6312C3	6212C3	640	\$4,100
	1800	324T	WH0404FFA	94.8	95.0	6312	6212	650	\$3,916
	1200	364T	WH0406FFA	96.0	94.5	6315	6312	850	\$6,425
	1200	364/5T	WH0406FFAN	96.0	94.5	6314Z/C3	6314Z/C3	836	\$6,425
	900	365T	WH0408FFA	108	92.4	6315	6312	1002	\$10,184
	900	364/5T	WH0408FFAN	108	91.7	6314Z/C3	6314Z/C3	836	\$10,184
50	3600	326TS	WH0502FFA	114	93.6	6312C3	6212C3	710	\$5,388
	1800	326T	WH0504FFA	118	95.0	6312	6212	716	\$4,984
	1200	365T	WH0506FFA	120	94.5	6315	6312	1002	\$7,513
	1200	364/5T	WH0506FFAN	120	94.5	6314Z/C3	6314Z/C3	836	\$7,513
	900	404T	WH0508FFA	134	93.0	6318	6313	1402	\$11,931
	900	404/5T	WH0508FFAN	134	92.4	6316Z/C3	6316Z/C3	1270	\$11,931
60	3600	364TS	WH0602FFA	136	94.1	6312C3	6312C3	835	\$7,022
	3600	364/5TS	WH0602FFAN	136	93.6	6314Z/C3	6314Z/C3	823	\$7,022
	1800	364T	WH0604FFA	143	95.0	6315	6312	850	\$6,738
	1800	364/5T	WH0604FFAN	143	95.0	6314Z/C3	6314Z/C3	836	\$6,738
	1200	404T	WH0606FFA	148	95.0	6318	6313	1402	\$8,650
	1200	404/5T	WH0606FFAN	148	94.5	6316Z/C3	6316Z/C3	1270	\$8,650
	900	405T	WH0608FFA	158	93.6	6318	6313	1488	\$12,918
	900	404/5T	WH0608FFAN	158	92.4	6316Z/C3	6316Z/C3	1270	\$12,918

For 575/3/60, change model number and amps; other items including price remain the same as 460/3/60.

MODELS ENDING IN "FFA" / "FFAC" ARE USABLE ON 200 VOLT

F/L Amps are at 230V except for 125HP and above, which are at 460V

Weights are estimates.

New S Series = Motor Model No. that ends in "N".

SUPER - MAX SERIES TEFC

NEMA PREMIUM EFFICIENCY, FRAMES: 143T - N5808

CAST IRON FRAME, 3 PHASE, 60HZ, 230/460 VOLT, 1.15 S.F., INVERTER DUTY

CLASS F INSULATION, NEMA DESIGN B, CONTINUOUS DUTY, 40 DEGREE C AMBIENT



HP	RPM	FRAME	MODEL NO.	230V F/L AMPS	NOM. EFF.	BEARINGS		WEIGHT LBS.	LIST PRICE
						Drive End	O. D. End		
75	3600	365TS	WH0752FFA	168	94.5	6312C3	6312C3	960	\$8,875
	3600	364/5TS	WH0752FFAN	168	93.6	6314Z/C3	6314Z/C3	823	\$8,875
	1800	365T	WH0754FFA	180	95.4	6315	6312	1002	\$8,608
	1800	364/5T	WH0754FFAN	180	95.4	6314Z/C3	6314Z/C3	836	\$8,608
	1200	405T	WH0756FFA	181	95.0	6318	6313	1488	\$10,391
	1200	404/5T	WH0756FFAN	181	94.5	6316Z/C3	6316Z/C3	1270	\$10,391
	900	444T	WH0758FFA	196	94.1	6320	6315	1900	\$16,950
	900	444/5T	WH0758FFAN	196	93.6	6318Z/C3	6316Z/C3	1810	\$16,950
100	3600	405TS	WH1002FFA	228	94.5	6313C3	6313C3	1464	\$11,660
	3600	404/5TS	WH1002FFAN	222	94.1	6316Z/C3	6316Z/C3	1170	\$11,660
	1800	405T	WH1004FFA	240	95.4	6318	6313	1488	\$10,597
	1800	404/5T	WH1004FFAN	240	95.4	6316Z/C3	6316Z/C3	1270	\$10,597
	1200	444T	WH1006FFA	242	95.0	6320	6315	1900	\$13,888
	1200	444/5T	WH1006FFAN	248	95.0	6318Z/C3	6316Z/C3	1810	\$13,888
	900	445T	WH1008FFA	256	94.5	6320	6315	2100	\$20,809
	900	444/5T	WH1008FFAN	256	93.6	6318Z/C3	6316Z/C3	1810	\$20,809
125	3600	444TS	WH1252FFI	145	95.0	6313C3	6313C3	1852	\$14,753
	3600	444/5TS	WH1252FFBN	145	95.0	6316Z/C3	6316Z/C3	1640	\$14,753
	1800	444T	WH1254FFI	148	95.8	6320	6315	1900	\$13,653
	1800	444/5T	WH1254FFBN	148	95.4	6318Z/C3	6316Z/C3	1810	\$13,653
	1200	445T	WH1256FFI	150	95.4	6320	6315	2078	\$16,175
	1200	444/5T	WH1256FFBN	150	95.0	6318Z/C3	6316Z/C3	1810	\$16,175
	900	447T	WH1258FFI	159	94.5	6320	6315	2700	\$22,159
	900	447/9T	WH1258FFBN	159	94.1	6320Z/C3	6316Z/C3	2607	\$22,159
150	3600	445TS	WH1502FFI	173	95.0	6313C3	6313C3	2000	\$17,744
	3600	444/5TS	WH1502FFBN	166	95.0	6316Z/C3	6316Z/C3	1640	\$17,744
	1800	445T	WH1504FFI	169	95.8	6320	6315	2100	\$15,884
	1800	444/5T	WH1504FFBN	175	95.8	6318Z/C3	6316Z/C3	1810	\$15,844
	1200	447T	WH1506FFI	178	95.8	6320	6315	2700	\$19,638
	1200	447/9T	WH1506FFBN	178	95.8	6320Z/C3	6316Z/C3	2607	\$19,368
	900	449T	WH1508FFI	189.5	94.5	6320	6318	2700	\$25,578
	900	447/9T	WH1508FFBN	190	94.1	6320Z/C3	6316Z/C3	2607	\$25,578

For 575/3/60, change model number and amps; other items including price remain the same as 460/3/60.

F/L Amps are at 230V except for 125HP and above, which are at 460V

Weights are estimates.

New S Series = Motor Model No. that ends in "N".

NEMA PREMIUM EFFICIENCY, FRAMES: 143T - N5808

CAST IRON FRAME, 3 PHASE, 60HZ, 230/460 VOLT, 1.15 S.F., INVERTER DUTY

CLASS F INSULATION, NEMA DESIGN B, CONTINUOUS DUTY, 40 DEGREE C AMBIENT



HP	RPM	FRAME	MODEL NO.	460V F/L AMPS	NOM. EFF.	BEARINGS		WEIGHT LBS.	LIST PRICE
						Drive End	O. D. End		
200	3600	447TS	WH2002FFB	228	95.4	6313C3	6313C3	2550	\$22,859
	3600	447/9TS	WH2002FFBN	219	95.0	6316Z/C3	6316Z/C3	2150	\$22,859
	1800	447T	WH2004FFB	220	96.2	6320	6315	2700	\$19,503
	1800	447/9T	WH2004FFBN	231	96.2	6318Z/C3	6316Z/C3	2607	\$19,503
	1200	449T	WH2006FFB	234	95.8	6320	6318	3200	\$24,409
	1200	447/9T	WH2006FFBN	234	95.8	6318Z/C3	6316Z/C3	2607	\$24,409
	900	N5007/9	WH2008FFBK	251	95.0	6222	6222	4405	\$33,294
250	3600	449TS	WH2502FFB	276	95.8	6313C3	6313C3	2900	\$26,425
	3600	447/9TS	WH2502FFBN	276	95.8	6316Z/C3	6316Z/C3	2150	\$26,425
	1800	449T	WH2504FFB	274	96.2	6320	6318	3200	\$24,128
	1800	447/9T	WH2504FFBN	291	96.2	6318Z/C3	6316Z/C3	2607	\$24,128
	1200	449T	WH2506FFB	290	96.2	6320	6318	3200	\$28,766
	1200	447/9T	WH2506FFBN	294	95.8	6318Z/C3	6316Z/C3	2607	\$28,766
	900	N5007/9	WH2508FFBK	304	95.0	6222	6222	4405	\$35,281
300	3600	S447/9TS	WH3002FFBN	335	95.8	6316Z/C3	6316Z/C3	3400	\$32,687
	3600	N5007/9S	WH3002FFBK	329	95.8	6315C3	6315C3	3482	\$36,734
	1800	449T	WH3004FFB	332	96.2	6320	6318	3200	\$28,059
	1800	447/9T	WH3004FFBN	354	96.2	6318Z/C3	6316Z/C3	2607	\$28,059
	1200	S447/9T	WH3006FFBN	350	95.8	6320	6316	3680	\$32,669
	1200	N5007/9	WH3006FFBK	352	96.2	6222	6222	4405	\$36,716
	900	N5807/8	WH3008FFBK	365	95.0	6224C3	6224C3	5400	\$43,650
350	3600	S447/9TS	WH3502FFBN	389	95.8	6316Z/C3	6316Z/C3	3400	\$34,143
	3600	N5007/9S	WH3502FFBK	379	95.8	6315C3	6315C3	4405	\$38,372
	1800	S447/9T	WH3504FFBN	390	96.2	6320	6316	3680	\$32,654
	1800	N5007/9	WH3504FFBK	392	96.2	6222	6222	4405	\$36,697
	1200	N5007/9	WH3506FFBK	415	96.2	6222	6222	4405	\$39,784
400	3600	S447/9TS	WH4002FFBN	445	95.8	6316Z/C3	6316Z/C3	3400	\$40,322
	3600	N5007/9S	WH4002FFBK	433	95.8	6315C3	6315C3	4405	\$35,878
	1800	N5007/9	WH4004FFBK	442	96.2	6222	6222	4405	\$39,088
	1800	S447/9T	WH4004FFBN	445	96.2	6320	6316	3680	\$34,785
	1200	N5007/9	WH4006FFBK	469	96.2	6222	6222	4405	\$44,028
450	3600	N5807/8S	WH4502FFBK	487	96.2	6218C3	6218C3	5400	\$49,884
	1800	N5007/9	WH4504FFBK	492	96.2	6222	6222	4405	\$42,472
	1200	N5807/8	WH4506FFBK	521	96.2	6224C3	6224C3	5400	\$50,003
500	3600	N5807/8S	WH5002FFBK	541	96.2	6218C3	6218C3	5400	\$51,141
	1800	N5807/8	WH5004FFBK	566	96.2	6224C3	6224C3	5400	\$46,497
	1200	N5807/8	WH5006FFBK	579	96.2	6224C3	6224C3	5400	\$51,638

For 575/3/60, change model number and amps; other items including price remain the same as 460/3/60.

F/L Amps are at 230V except for 200HP and above, which are at 460V

Weights are estimates.

New S Series = Motor Model No. that ends in "N".

SUPER MAX TEFC C-FACE FOOTED TEFC

NEMA PREMIUM EFFICIENCY, FRAMES: 143TC - 324TC

C-FACE FOOTED, INVERTER DUTY

3 PHASE, 60HZ, 230/460 VOLT, 1.15 S.F.

NEMA DESIGN B, CLASS F INSULATION, 40 DEGREE C AMBIENT



HP	RPM	FRAME	MODEL NO.	230V F/L AMPS	NOM. EFF.	BEARINGS		WEIGHT LBS.	LIST PRICE
						Drive End	O. D. End		
1	1800	143TC	WH0014FBAC	2.8	86.5	6205ZZ	6205ZZ	52	\$553
1.5	1800	145TC	WH1Y54FBAC	4.2	87.5	6205ZZ	6205ZZ	58	\$611
2	1800	145TC	WH0024FBAC	5.6	87.5	6205ZZ	6205ZZ	58	\$669
3	1800	182TC	WH0034FBAC	7.8	90.2	6207ZZ	6206ZZ	96	\$735
5	1800	184TC	WH0054FBAC	12.8	90.2	6207ZZ	6206ZZ	106	\$847
7.5	1800	213TC	WH7Y54FBAC	18.2	91.7	6308ZZ	6208ZZ	168	\$1,154
10	1800	215TC	WH0104FBAC	23.8	91.7	6308ZZ	6208ZZ	192	\$1,373
15	1800	254TC	WH0154FBAC	37.0	92.4	6310ZZ	6208ZZ	290	\$1,951
20	1800	256TC	WH0204FBAC	49.0	93	6310ZZ	6208ZZ	325	\$2,427
25	1800	284TC	WH0254FBA	60.0	93.6	6310ZZ	6210ZZ	445	\$2,860
30	1800	286TC	WH0304FBA	72.0	93.6	6310ZZ	6210ZZ	475	\$3,353
40	1800	324TC	WH0404FBA	94.8	95.0	6312	6212	650	\$4,280
50	1800	326TC	WH0504FBA	118	95.0	6312	6212	716	\$5,408

For 575/3/60, change model number and amps; other items including price remain the same as 460/3/60.

Weights are estimates.

ROUND BODY C-FACE TEFC

NEMA PREMIUM EFFICIENCY, FRAMES: 143TC - 324TC

C-FACE FOOTLESS, DRIP COVER, INVERTER DUTY

3 PHASE, 60HZ, 230/460 VOLT, 1.15 S.F.

NEMA DESIGN B, CLASS F INSULATION, 40 DEGREE C AMBIENT



HP	RPM	FRAME	MODEL NO.	230V F/L AMPS	NOM. EFF.	BEARINGS		WEIGHT LBS.	LIST PRICE
						Drive End	O. D. End		
1	1800	143TC	WH0014FCA	2.8	86.5	6205ZZ	6205ZZ	44	\$553
1.5	3600	143TC	WH1Y52FCA	3.8	85.5	6205ZZ	6205ZZ	44	\$599
	1800	145TC	WH1Y54FCA	4.2	87.5	6205ZZ	6205ZZ	55	\$611
2	3600	145TC	WH0022FCA	5.0	86.5	6205ZZ	6205ZZ	55	\$673
	1800	145TC	WH0024FCA	5.6	87.5	6205ZZ	6205ZZ	55	\$669
3	3600	182TC	WH0032FCA	7.2	88.5	6207ZZ	6206ZZ	82	\$781
	1800	182TC	WH0034FCA	7.8	90.2	6207ZZ	6206ZZ	82	\$735
5	3600	184TC	WH0052FCA	11.6	90.2	6306ZZ	6206ZZ	95	\$1,033
	1800	184TC	WH0054FCA	12.8	90.2	6306ZZ	6206ZZ	95	\$847
7.5	3600	213TC	WH7Y52FCA	18.0	90.2	6308ZZ	6208ZZ	140	\$1,331
	1800	213TC	WH7Y54FCA	18.2	91.7	6308ZZ	6208ZZ	140	\$1,154
10	3600	215TC	WH0102FCA	23.0	91.7	6308ZZ	6208ZZ	152	\$1,592
	1800	215TC	WH0104FCA	23.8	91.7	6308ZZ	6208ZZ	152	\$1,373
15	3600	254TC	WH0152FCA	34.6	91.0	6310ZZ	6208ZZ	253	\$2,191
	1800	254TC	WH0154FCA	37.0	92.4	6310ZZ	6208ZZ	253	\$1,951
20	3600	256TC	WH0202FCA	46.0	91.0	6310ZZ	6208ZZ	310	\$2,808
	1800	256TC	WH0204FCA	49.0	93.0	6310ZZ	6208ZZ	310	\$2,427
25	3600	284TSC	WH0252FCA	57.4	91.7	6310ZZ	6310ZZ	391	\$3,502
	1800	284TC	WH0254FCA	60.0	93.6	6310ZZ	6310ZZ	391	\$2,860
30	3600	286TSC	WH0302FCA	68.2	92.4	6310ZZ	6310ZZ	501	\$4,206
	1800	286TC	WH0304FCA	72.0	93.6	6310ZZ	6310ZZ	501	\$3,353
40	3600	324TSC	WH0402FCA	93.4	93.0	6312C3	6312C3	588	\$5,349
	1800	324TC	WH0404FCA	94.8	95.0	6312	6312	578	\$4,280

For 575/3/60, change model number and amps; other items including price remain the same as 460/3/60.

USABLE ON 200 VOLT

Weights are estimates.

NEMA PREMIUM EFFICIENCY, FRAMES: 143T - 5807N

CAST IRON FRAME, 3 PHASE, 60HZ , 230/460 VOLT, 1.15 S.F., INVERTER DUTY

CLASS F INSULATION, NEMA DESIGN B, CONTINUOUS DUTY, 40 DEGREE C AMBIENT



HP	RPM	FRAME	MODEL NO.	230V F/L AMPS	NOM. EFF.	BEARINGS		WEIGHT LBS.	LIST PRICE
						Drive End	O. D. End		
3/4	1200	143T	WH3P46DFA	2.8	80.0	6205ZZ	6205ZZ	43	\$445
1	1800	143T	WH0014DFA	3.0	85.5	6205ZZ	6205ZZ	43	\$363
	1200	145T	WH0016DFA	3.6	82.5	6205ZZ	6205ZZ	55	\$469
1.5	3600	143T	WH1Y52DFA	3.8	86.5	6205ZZ	6205ZZ	43	\$394
	1800	145T	WH1Y54DFA	4.2	86.5	6205ZZ	6205ZZ	55	\$394
	1200	182T	WH1Y56DFA	5.4	86.5	6207ZZ	6206ZZ	72	\$516
2	3600	145T	WH0022DFA	5.0	86.5	6205ZZ	6205ZZ	55	\$469
	1800	145T	WH0024DFA	5.6	86.5	6205ZZ	6205ZZ	55	\$434
	1200	184T	WH0026DFA	7.6	88.5	6207ZZ	6206ZZ	97	\$566
3	3600	145T	WH0032DFA	7.6	85.5	6205ZZ	6205ZZ	55	\$519
	1800	182T	WH0034DFA	8.0	89.5	6207ZZ	6206ZZ	72	\$463
	1200	213T	WH0036DFA	10.0	89.5	6308ZZ	6208ZZ	140	\$753
5	3600	182T	WH0052DFA	11.6	89.5	6207ZZ	6206ZZ	72	\$634
	1800	184T	WH0054DFA	12.6	89.5	6207ZZ	6206ZZ	97	\$550
	1200	215T	WH0056DFA	14.4	90.2	6308ZZ	6208ZZ	165	\$988
7.5	3600	184T	WH7Y52DFA	17.4	89.5	6207ZZ	6206ZZ	97	\$816
	1800	213T	WH7Y54DFA	20.0	91.0	6308ZZ	6208ZZ	140	\$813
	1200	254T	WH7Y56DFA	21.0	91.7	6310ZZ	6208ZZ	260	\$1,359
10	3600	213T	WH0102DFA	24.8	90.2	6308ZZ	6208ZZ	140	\$997
	1800	215T	WH0104DFA	25.4	91.7	6308ZZ	6208ZZ	165	\$969
	1200	256T	WH0106DFA	28.4	91.7	6310ZZ	6208ZZ	310	\$1,550
15	3600	215T	WH0152DFA	36.4	90.2	6308ZZ	6208ZZ	165	\$1,278
	1800	254T	WH0154DFA	37.2	93.0	6310ZZ	6208ZZ	260	\$1,325
	1200	284T	WH0156DFA	38.4	92.4	6312ZZ	6310ZZ	380	\$2,072
20	3600	254T	WH0202DFA	46.0	91.7	6310ZZ	6208ZZ	260	\$1,594
	1800	256T	WH0204DFA	49.0	93.0	6310ZZ	6208ZZ	310	\$1,697
	1200	286T	WH0206DFA	52.0	92.4	6312ZZ	6310ZZ	446	\$2,516
25	3600	256T	WH0252DFA	58.0	91.7	6310ZZ	6208ZZ	310	\$1,878
	1800	284T	WH0254DFA	62.0	93.6	6312ZZ	6310ZZ	380	\$1,900
	1200	324T	WH0256DFA	64.0	93.0	6312	6312	583	\$2,759

For 575/3/60, change model number and amps; other items including price remain the same as 460/3/60.

MODELS ENDING IN "DFA" ARE USABLE ON 200 VOLT

F/L Amps are at 230V except for 200HP and above, which are at 460V

Weights are estimates.

SUPER - MAX SERIES ODP

NEMA PREMIUM EFFICIENCY, FRAMES: 143T - 5807N

CAST IRON FRAME, 3 PHASE, 60HZ , 230/460 VOLT, 1.15 S.F., INVERTER DUTY

CLASS F INSULATION, NEMA DESIGN B, CONTINUOUS DUTY, 40 DEGREE C AMBIENT



HP	RPM	FRAME	MODEL NO.	230V F/L AMPS	NOM. EFF.	BEARINGS		WEIGHT LBS.	LIST PRICE
						Drive End	O. D. End		
30	3600	284TS	WH0302DFA	70.0	92.4	6312ZZC3	6310ZZC3	374	\$2,328
	1800	286T	WH0304DFA	74.0	94.1	6312ZZ	6310ZZ	446	\$2,228
	1200	326T	WH0306DFA	78.0	93.6	6312	6312	666	\$3,153
40	3600	286TS	WH0402DFA	94.0	93.0	6312ZZC3	6310ZZC3	435	\$2,978
	1800	324T	WH0404DFA	98.0	94.1	6312	6312	583	\$2,763
	1200	364T	WH0406DFA	100	94.1	6314	6313	750	\$4,184
50	3600	324TS	WH0502DFA	116	93.6	6312C3	6312C3	575	\$3,472
	1800	326T	WH0504DFA	122	94.5	6312	6312	666	\$3,153
	1200	365T	WH0506DFA	124	94.1	6314	6313	838	\$5,322
60	3600	326TS	WH0602DFA	136	94.1	6312C3	6312C3	625	\$4,309
	1800	364T	WH0604DFA	146	95.0	6314	6313	750	\$4,369
	1200	404T	WH0606DFA	152	94.5	6317	6313	1090	\$6,384
75	3600	364TS	WH0752DFA	180	93.6	6313C3	6313C3	745	\$5,716
	1800	365T	WH0754DFA	182	95.4	6314	6313	838	\$5,338
	1200	405T	WH0756DFA	186	95.0	6317	6313	1172	\$7,994
100	3600	365TS	WH1002DFA	226	94.5	6313C3	6313C3	799	\$6,828
	1800	404T	WH1004DFA	232	95.4	6317	6313	1090	\$6,708
	1200	444T	WH1006DFA	242	95.4	6318	6318	1543	\$9,885
125	3600	404TS	WH1252DFI	284	94.5	6313C3	6313C3	1068	\$8,581
	1800	405T	WH1254DFI	284	95.8	6317	6313	1172	\$7,753
	1200	445T	WH1256DFI	302	95.4	6318	6318	1758	\$12,249
150	3600	405TS	WH1502DFI	338	95.0	6313C3	6313C3	1161	\$11,383
	1800	444T	WH1504DFI	340	95.8	6318	6318	1543	\$10,049
	1200	445T	WH1506DFI	358	95.8	6318	6318	2100	\$13,031
200	3600	444TS	WH2002DFB	220	95.8	6313C3	6313C3	1462	\$15,107
	1800	445T	WH2004DFB	225	95.8	6318	6318	1758	\$12,738
	1200	447T	WH2006DFB	238	95.8	6318	6318	2100	\$18,437

For 575/3/60, change model number and amps; other items including price remain the same as 460/3/60.

MODELS ENDING IN "DFA" ARE USABLE ON 200 VOLT

F/L Amps are at 230V except for 200HP and above, which are at 460V

Weights are estimates.

NEMA PREMIUM EFFICIENCY, FRAMES: 143T - 5807N

CAST IRON FRAME, 3-PHASE, 60HZ, 230/460 VOLT, 1.15 S.F., INVERTER DUTY

CLASS F INSULATION, NEMA DESIGN B, CONTINUOUS DUTY, 40 DEGREE C AMBIENT



HP	RPM	FRAME	MODEL NO.	460 F/L AMPS	NOM. EFF.	BEARINGS		WEIGHT LBS.	LIST PRICE
						Drive End	O. D. End		
250	3600	445TS	WH2502DFB	273	96.2	6313C3	6313C3	1553	\$15,609
	1800	447T	WH2504DFB	278	95.8	6318	6318	2100	\$15,609
	1200	449T	WH2506DFB	298	95.8	6318	6318	2300	\$21,094
300	3600	447TS	WH3002DFB	329	95.8	6313C3	6313C3	2100	\$18,563
	1800	449T	WH3004DFB	330	96.2	6318	6318	2300	\$17,719
	1200	505T	WH3006DFB	349	95.8	6320	6320	2500	\$24,891
350	3600	449TS	WH3502DFB	384	95.8	6313C3	6313C3	2150	\$23,625
	1800	449T	WH3504DFB	385	96.2	6318	6318	2300	\$22,359
	1200	5007N	WH3506DFB	407	95.8	6224	6320	3400	\$28,266
400	3600	449TS	WH4002DFB	437	96.2	6313C3	6313C3	2150	\$26,156
	1800	449T	WH4004DFB	440	96.2	6318	6318	2300	\$24,469
	1200	5007N	WH4006DFB	463	95.8	6224	6320	3400	\$30,375
450	3600	449TS	WH4502DFB	492	96.2	6313C3	6313C3	2150	\$28,266
	1800	505T	WH4504DFB	492	96.2	6320	6320	2500	\$29,531
	1200	5807N	WH4506DFB	518	96.2	6224	6320	3850	\$37,969
500	3600	5007NS	WH5002DFB	541	96.2	6314C3	6314C3	3250	\$36,281
	1800	505T	WH5004DFB	547	96.2	6320	6320	2500	\$32,063
	1200	5807N	WH5006DFB	576	96.2	6224	6320	3850	\$40,078

For 575/3/60, change model number and amps; other items including price remain the same as 460/3/60.

F/L Amps are at 230V except for 200HP and above, which are at 460V

Weights are estimates.

SUPER-MAX 841 MOTORS TEFC

NEMA PREMIUM EFFICIENCY, SEVERE DUTY, FRAMES: 143T - N5808

3 PHASE, 60HZ, 460 VOLT, 1.15 S.F., CLASS F INSULATION, INVERTER DUTY

NEMA DESIGN B, 40 DEGREE C AMBIENT



HP	RPM	FRAME	MODEL NO.	F/L AMPS	NOM. EFF.	BEARINGS		WEIGHT LBS.	LIST PRICE
						Drive End	O. D. End		
3/4	1200	143T	WH3P46JFBC	1.3	84.0	6205ZC3	6205ZC3	50	\$988
1	1800	143T	WH0014JFBC	1.4	86.5	6205ZC3	6205ZC3	50	\$884
	1200	145T	WH0016JFBC	1.7	84.0	6205ZC3	6205ZC3	60	\$1,039
	900	182T	WH0018JFBC	1.9	84.0	6207ZC3	6206ZC3	98	\$1,528
1.5	3600	143T	WH1Y52JFBC	1.9	85.5	6205ZC3	6205ZC3	50	\$931
	1800	145T	WH1Y54JFBC	2.1	87.5	6205ZC3	6205ZC3	60	\$955
	1200	182T	WH1Y56JFBC	2.4	87.5	6207ZC3	6206ZC3	98	\$1,325
	900	184T	WH1Y58JFBC	2.8	84.0	6207ZC3	6206ZC3	114	\$1,803
2	3600	145T	WH0022JFBC	2.5	86.5	6205ZC3	6205ZC3	60	\$1,066
	1800	145T	WH0024JFBC	2.8	87.5	6205ZC3	6205ZC3	60	\$1,027
	1200	184T	WH0026JFBC	2.9	88.5	6207ZC3	6206ZC3	114	\$1,349
	900	213T	WH0028JFBC	3.1	85.5	6308ZC3	6208ZC3	171	\$2,176
3	3600	182T	WH0032JFBC	3.6	88.5	6207ZC3	6206ZC3	98	\$1,349
	1800	182T	WH0034JFBC	3.9	90.2	6207ZC3	6206ZC3	114	\$1,293
	1200	213T	WH0036JFBC	4.3	89.5	6308ZC3	6208ZC3	171	\$1,651
	900	215T	WH0038JFBC	4.6	85.5	6308ZC3	6208ZC3	195	\$2,770
5	3600	184T	WH0052JFBC	5.8	90.2	6207ZC3	6206ZC3	113	\$1,493
	1800	184T	WH0054JFBC	6.4	90.2	6207ZC3	6206ZC3	115	\$1,361
	1200	215T	WH0056JFBC	6.9	89.5	6308ZC3	6208ZC3	195	\$2,197
	900	254T	WH0058JFBC	7.5	89.5	6310C3	6208C3	298	\$3,669
7.5	3600	213T	WH7Y52JFBC	9.0	90.2	6308ZC3	6208ZC3	171	\$1,815
	1800	213T	WH7Y54JFBC	9.1	91.7	6308ZC3	6208ZC3	171	\$1,890
	1200	254T	WH7Y56JFBC	10.1	91.7	6310C3	6208C3	298	\$2,818
	900	256T	WH7Y58JFBC	11.3	89.5	6310C3	6208C3	334	\$4,573
10	3600	215T	WH0102JFBC	11.5	91.7	6308ZC3	6208ZC3	195	\$2,051
	1800	215T	WH0104JFBC	11.9	91.7	6308ZC3	6208ZC3	195	\$2,090
	1200	256T	WH0106JFBC	13.2	91.7	6310C3	6208C3	334	\$3,328
	900	284T	WH0108JFBC	15.0	91.0	6310C3	6210C3	470	\$4,785
15	3600	254T	WH0152JFBC	17.3	91.0	6310C3	6208C3	298	\$2,749
	1800	254T	WH0154JFBC	18.5	92.4	6310C3	6208C3	298	\$2,710
	1200	284T	WH0156JFBC	19.4	92.4	6310C3	6310C3	470	\$4,343
	900	286T	WH0158JFBC	21.2	91.7	6310C3	6310C3	510	\$6,182

12/14/17

For 575/3/60, change model number and amps; other items including price remain the same as 460/3/60.

Weights are estimates.

NEMA PREMIUM EFFICIENCY, SEVERE DUTY, FRAMES: 143T - N5808

3 PHASE, 60HZ, 460 VOLT, 1.15 S.F., CLASS F INSULATION, INVERTER DUTY

NEMA DESIGN B, 40 DEGREE C AMBIENT



HP	RPM	FRAME	MODEL NO.	F/L AMPS	NOM. EFF.	BEARINGS		WEIGHT LBS.	LIST PRICE
						Drive End	O. D. End		
20	3600	256T	WH0202JFBC	23.0	91.0	6310C3	6208C3	334	\$3,281
	1800	256T	WH0204JFBC	24.5	93.0	6310C3	6208C3	334	\$3,248
	1200	286T	WH0206JFBC	25.5	92.4	6310C3	6310C3	510	\$5,161
	900	324T	WH0208JFBC	28.3	91.7	6312C3	6312C3	645	\$7,764
25	3600	284TS	WH0252JFBC	28.7	91.7	6310C3	6310C3	443	\$3,833
	1800	284T	WH0254JFBC	30.0	93.6	6310C3	6310C3	470	\$3,687
	1200	324T	WH0256JFBC	30.2	93.0	6312C3	6312C3	645	\$5,979
	900	326T	WH0258JFBC	35.5	91.7	6312C3	6312C3	730	\$8,499
30	3600	286TS	WH0302JFBC	34.1	92.4	6310C3	6310C3	501	\$4,379
	1800	286T	WH0304JFBC	36.0	93.6	6310C3	6310C3	510	\$4,191
	1200	326T	WH0306JFBC	36.0	93.0	6312C3	6312C3	730	\$6,773
	900	364T	WH0308JFBC	41.6	92.4	6315C3	6312C3	905	\$9,648
	900	364/5T	WH0308JFBCN	41.6	91.7	6314Z/C3	6314Z/C3	856	\$9,704
40	3600	324TS	WH0402JFBC	46.7	93.0	6312C3	6312C3	617	\$5,710
	1800	324T	WH0404JFBC	47.4	95.0	6312C3	6312C3	645	\$5,516
	1200	364T	WH0406JFBC	48.0	94.5	6315C3	6312C3	905	\$8,967
	1200	364/5T	WH0406JFBCN	48.0	94.1	6314Z/C3	6314Z/C3	856	\$9,018
	900	365T	WH0408JFBC	54.0	92.4	6315C3	6312C3	981	\$12,600
	900	364/5T	WH0408JFBCN	54.0	91.7	6314Z/C3	6314Z/C3	856	\$12,654
50	3600	326TS	WH0502JFBC	57.0	93.6	6312C3	6312C3	683	\$7,197
	1800	326T	WH0504JFBC	59.0	95.0	6312C3	6312C3	730	\$6,606
	1200	365T	WH0506JFBC	60.0	94.5	6315C3	6312C3	981	\$10,194
	1200	364/5T	WH0506JFBCN	60.0	94.1	6314Z/C3	6314Z/C3	856	\$10,245
	900	404T	WH0508JFBC	67.0	93.0	6318C3	6313C3	1400	\$14,146
	900	404/5T	WH0508JFBCN	67.0	92.4	6316Z/C3	6316Z/C3	1320	\$14,600
60	3600	364TS	WH0602JFBC	68.0	94.1	6312C3	6312C3	893	\$8,382
	3600	364/5TS	WH0602JFBCN	68.0	93.6	6314Z/C3	6314Z/C3	843	\$8,490
	1800	364T	WH0604JFBC	71.5	95.0	6315C3	6312C3	905	\$8,370
	1800	364/5T	WH0604JFBCN	71.5	95.0	6314Z/C3	6314Z/C3	856	\$8,427
	1200	404T	WH0606JFBC	74.0	95.0	6318C3	6313C3	1400	\$11,952
	1200	404/5T	WH0606JFBCN	74.0	94.5	6316Z/C3	6316Z/C3	1320	\$12,406
	900	405T	WH0608JFBC	79.0	93.6	6318C3	6313C3	1510	\$15,048
	900	404/5T	WH0608JFBCN	79.0	92.4	6316Z/C3	6316Z/C3	1320	\$15,501

For 575/3/60, change model number and amps; other items including price remain the same as 460/3/60.

Weights are estimates.

New S Series = Motor Model No. that ends in "N".

NEMA PREMIUM EFFICIENCY, SEVERE DUTY, FRAMES: 143T - N5808

3 PHASE, 60HZ, 460 VOLT, 1.15 S.F., CLASS F INSULATION, INVERTER DUTY

NEMA DESIGN B, 40 DEGREE C AMBIENT



HP	RPM	FRAME	MODEL NO.	F/L AMPS	NOM. EFF.	BEARINGS		WEIGHT LBS.	LIST PRICE
						Drive End	O. D. End		
75	3600	365TS	WH0752JFBC	84.0	94.5	6312C3	6312C3	980	\$10,343
	3600	364/5TS	WH0752JFBCN	84.0	93.6	6314Z/C3	6314Z/C3	843	\$10,451
	1800	365T	WH0754JFBC	90.0	95.4	6315C3	6312C3	981	\$10,403
	1800	364/5T	WH0754JFBCN	90.0	95.4	6314Z/C3	6314Z/C3	856	\$10,457
	1200	405T	WH0756JFBC	90.5	95.0	6318C3	6313C3	1510	\$14,331
	1200	404/5T	WH0756JFBCN	90.5	94.5	6316Z/C3	6316Z/C3	1510	\$14,785
	900	444T	WH0758JFBC	98.0	94.1	6320C3	6315C3	1940	\$18,687
900	444/5T	WH0758JFBCN	98.0	93.6	6318Z/C3	6316Z/C3	1860	\$18,707	
100	3600	405TS	WH1002JFBC	114	94.5	6313C3	6313C3	1502	\$16,051
	3600	404/5TS	WH1002JFBCN	111	94.1	6316Z/C3	6316Z/C3	1220	\$16,645
	1800	405T	WH1004JFBC	120	95.4	6318C3	6313C3	1510	\$15,101
	1800	404/5T	WH1004JFBCN	120	95.4	6316Z/C3	6316Z/C3	1510	\$15,555
	1200	444T	WH1006JFBC	121	95.0	6320C3	6315C3	1940	\$18,439
	1200	444/5T	WH1006JFBCN	124	95.0	6318Z/C3	6316Z/C3	1860	\$18,460
	900	445T	WH1008JFBC	128	94.5	6320C3	6315C3	2190	\$24,487
900	444/5T	WH1008JFBCN	128	93.6	6318Z/C3	6316Z/C3	1860	\$24,504	
125	3600	444TS	WH1252JFBC	145	95.0	6313C3	6313C3	1876	\$20,552
	3600	444/5TS	WH1252JFBCN	145	95.0	6316Z/C3	6316Z/C3	1690	\$21,146
	1800	444T	WH1254JFBC	143	95.8	6320C3	6315C3	1940	\$19,573
	1800	444/5T	WH1254JFBCN	148	95.4	6318Z/C3	6316Z/C3	1860	\$19,594
	1200	445T	WH1256JFBC	150	95.4	6320C3	6315C3	2190	\$21,842
	1200	444/5T	WH1256JFBCN	150	95.0	6318Z/C3	6316Z/C3	1860	\$21,863
	900	447T	WH1258JFBC	159	94.5	6320C3	6315C3	2700	\$28,899
900	447/9T	WH1258JFBCN	159	94.1	6320Z/C3	6316Z/C3	2657	\$28,958	
150	3600	445TS	WH1502JFBC	173	95.0	6313C3	6313C3	2100	\$24,546
	3600	444/5TS	WH1502JFBCN	166	95.0	6316Z/C3	6316Z/C3	1690	\$25,024
	1800	445T	WH1504JFBC	169	95.8	6320C3	6315C3	2190	\$22,567
	1800	444/5T	WH1504JFBCN	175	95.8	6318Z/C3	6316Z/C3	1860	\$22,588
	1200	447T	WH1506JFBC	178	95.8	6320C3	6315C3	2700	\$26,758
	1200	447/9T	WH1506JFBCN	178	94.1	6320Z/C3	6316Z/C3	2657	\$26,818
	900	447/9T	WH1508JFBCN	190	94.1	6320Z/C3	6316Z/C3	2657	\$31,325

For 575/3/60, change model number and amps; other items including price remain the same as 460/3/60.

Weights are estimates.

New S Series = Motor Model No. that ends in "N".

NEMA PREMIUM EFFICIENCY, SEVERE DUTY, FRAMES: 143T - N580S

3 PHASE, 60HZ, 460 VOLT, 1.15 S.F., CLASS F INSULATION, INVERTER DUTY

NEMA DESIGN B, 40 DEGREE C AMBIENT



HP	RPM	FRAME	MODEL NO.	F/L AMPS	NOM. EFF.	BEARINGS		WEIGHT LBS.	LIST PRICE
						Drive End	O. D. End		
200	3600	447TS	WH2002JFBC	228	95.4	6313C3	6313C3	2562	\$31,191
	3600	447/9TS	WH2002JFBCN	219	95.4	6316Z/C3	6316Z/C3	2200	\$31,448
	1800	447T	WH2004JFBC	220	96.2	6320C3	6315C3	2700	\$27,197
	1800	447/9T	WH2004JFBCN	231	96.2	6320Z/C3	6316Z/C3	2657	\$27,260
	1200	449T	WH2006JFBC	234	95.8	6320C3	6318C3	3187	\$32,552
	1200	447/9T	WH2006JFBCN	234	95.8	6320Z/C3	6316Z/C3	2657	\$32,851
	900	N5007/9	WH2008JFBT	248	94.5	6222C3	6222C3	4355	\$38,779
250	3600	449TS	WH2502JFBC	276	95.8	6313C3	6313C3	2900	\$35,585
	3600	447/9TS	WH2502JFBCN	276	95.8	6316Z/C3	6316Z/C3	2200	\$35,842
	1800	449T	WH2504JFBC	274	96.2	6320C3	6318C3	3187	\$29,364
	1800	447/9T	WH2504JFBCN	291	96.2	6320Z/C3	6316Z/C3	2657	\$29,663
	1200	449T	WH2506JFBC	290	96.2	6320C3	6318C3	3187	\$36,116
	1200	447/9T	WH2506JFBCN	294	95.8	6320Z/C3	6316Z/C3	2657	\$36,415
	900	N5007/9	WH2508JFBT	304	95.0	6222C3	6222C3	4355	\$44,955
300	3600	N5007/9S	WH3002JFBT	329	95.8	6315C3	6315C3	4355	\$43,973
	3600	S447/9TS	WH3002JFBTN	335	95.8	6316C3	6316C3	3430	\$41,773
	1800	449T	WH3004JFBC	332	96.2	6320C3	6318C3	3187	\$33,875
	1800	447/9T	WH3004JFBCN	354	96.2	6320Z/C3	6316Z/C3	2657	\$34,173
	1200	S447/9T	WH3006JFBTN	350	95.8	6320C3	6316C3	3710	\$46,484
	1200	N5007/9	WH3006JFBT	352	96.2	6222C3	6222C3	4355	\$48,931
	900	N5807/8	WH3008JFBT	365	95.0	6224C3	6224C3	5988	\$51,322
350	3600	S447/9TS	WH3502JFBTN	389	95.8	6316C3	6316C3	3430	\$45,633
	3600	N5007/9S	WH3502JFBT	379	95.8	6315C3	6315C3	4355	\$48,036
	1800	S447/9T	WH3504JFBTN	390	96.2	6320C3	6316C3	3710	\$40,669
	1800	N5007/9	WH3504JFBT	392	96.2	6222C3	6222C3	4355	\$42,809
	1200	N5007/9	WH3506JFBT	415	96.2	6222C3	6222C3	4355	\$50,937
400	3600	S447/9TS	WH4002JFBTN	445	95.8	6316C3	6316C3	3430	\$45,675
	3600	N5007/9S	WH4002JFBT	433	95.8	6315C3	6315C3	4355	\$48,081
	1800	S447/9T	WH4004JFBTN	445	96.2	6320C3	6316C3	3710	\$42,301
	1800	N5007/9	WH4004JFBT	442	96.2	6222C3	6222C3	4355	\$44,528
	1200	N5007/9	WH4006JFBT	469	96.2	6222C3	6222C3	4355	\$52,122
450	3600	N5807/8S	WH4502JFBT	487	96.2	6218C3	6218C3	5705	\$54,925
	1800	N5007/9	WH4504JFBT	492	96.2	6222C3	6222C3	4355	\$46,785
	1200	N5807/8	WH4506JFBT	521	96.2	6224C3	6224C3	5988	\$59,000
500	3600	N5807/8S	WH5002JFBT	541	96.2	6218C3	6218C3	5705	\$56,391
	1800	N5807/8	WH5004JFBT	566	96.2	6224C3	6224C3	5988	\$51,382
	1200	N5807/8	WH5006JFBT	579	96.2	6224C3	6224C3	5988	\$60,466

For 575/3/60, change model number and amps; other items including price remain the same as 460/3/60.

Weights are estimates.

New S Series = Motor Model No. that ends in "N".

TOTALLY ENCLOSED FAN COOLED FRAMES: 143T - 447T

3 PHASE, 60HZ, 230/460V

NEMA DESIGN B, CLASS F INSULATION, 40 DEGREE C AMBIENT

HAZARDOUS LOCATIONS, DIV. I, CLASS I, GROUP D, CLASS II, GROUP E, F, G

NEMA Premium Efficiency



HP	RPM	FRAME	MODEL NO.	230V F/L AMPS	NOM. EFF.	BEARINGS		WEIGHT LBS.	LIST PRICE
						Drive End	O. D. End		
3/4	1200	143T	WH3P46EFA	2.7	82.5	6205ZZ	6205ZZ	86	\$856
1	1800	143T	WH0014EFA	2.8	86.5	6205ZZ	6205ZZ	86	\$835
	1200	145T	WH0016EFA	3.4	84.0	6205ZZ	6205ZZ	95	\$967
1.5	3600	143T	WH1Y52EFA	3.8	85.5	6205ZZ	6205ZZ	86	\$967
	1800	145T	WH1Y54EFA	4.2	87.5	6205ZZ	6205ZZ	95	\$899
	1200	182T	WH1Y56EFA	4.8	87.5	6207ZZ	6206ZZ	146	\$1,031
2	3600	145T	WH0022EFA	5.0	86.5	6205ZZ	6205ZZ	93	\$990
	1800	145T	WH0024EFA	5.6	87.5	6205ZZ	6205ZZ	93	\$941
	1200	184T	WH0026EFA	5.8	88.5	6207ZZ	6206ZZ	169	\$1,206
3	3600	182T	WH0032EFA	7.2	88.5	6207ZZ	6206ZZ	146	\$1,121
	1800	182T	WH0034EFA	7.8	90.2	6207ZZ	6206ZZ	146	\$1,100
	1200	213T	WH0036EFA	8.6	89.5	6308ZZ	6208ZZ	249	\$1,429
5	3600	184T	WH0052EFA	11.6	90.2	6207ZZ	6206ZZ	169	\$1,339
	1800	184T	WH0054EFA	12.8	90.2	6207ZZ	6206ZZ	169	\$1,296
	1200	215T	WH0056EFA	13.8	89.5	6308ZZ	6208ZZ	280	\$1,977
7.5	3600	213T	WH7Y52EFA	18.0	90.2	6308ZZ	6208ZZ	249	\$1,799
	1800	213T	WH7Y54EFA	18.2	91.7	6308ZZ	6208ZZ	249	\$1,821
	1200	254T	WH7Y56EFA	20.2	91.7	6310ZZ	6208ZZ	392	\$2,523
10	3600	215T	WH0102EFA	23.0	91.7	6308ZZ	6208ZZ	280	\$2,020
	1800	215T	WH0104EFA	23.8	91.7	6308ZZ	6208ZZ	280	\$2,105
	1200	256T	WH0106EFA	26.4	91.7	6310ZZ	6208ZZ	453	\$3,226
15	3600	254T	WH0152EFA	34.6	91.0	6310ZZ	6208ZZ	392	\$2,544
	1800	254T	WH0154EFA	37.0	92.4	6310ZZ	6208ZZ	392	\$2,765
	1200	284T	WH0156EFA	38.8	92.4	6310	6310	600	\$4,278
20	3600	256T	WH0202EFA	46.0	91.0	6310ZZ	6208ZZ	453	\$3,400
	1800	256T	WH0204EFA	49.0	93.0	6310ZZ	6208ZZ	453	\$3,490
	1200	286T	WH0206EFA	51.0	92.4	6310	6310	617	\$5,267
25	3600	284TS	WH0252EFA	57.4	91.7	6310C3	6310C3	589	\$4,300
	1800	284T	WH0254EFA	60.0	93.6	6310	6310	600	\$4,389
	1200	324T	WH0256EFA	60.4	93.0	6312	6312	790	\$6,367

For 575/3/60, change model number and amps; other items including price remain the same as 460/3/60.

MODELS ENDING IN "EFA" ARE USABLE ON 200 VOLT

Weights are estimates.

TOTALLY ENCLOSED FAN COOLED FRAMES: 143T - 447T

3 PHASE, 60HZ, 230/460V

NEMA DESIGN B, CLASS F INSULATION, 40 DEGREE C AMBIENT

HAZARDOUS LOCATIONS, DIV. I, CLASS I, GROUP D, CLASS II, GROUP E, F, G

NEMA Premium Efficiency



HP	RPM	FRAME	MODEL NO.	230V F/L AMPS	NOM. EFF.	BEARINGS		WEIGHT LBS.	LIST PRICE
						Drive End	O. D. End		
30	3600	286TS	WH0302EFA	68.2	92.4	6310C3	6310C3	626	\$4,938
	1800	286T	WH0304EFA	72.0	93.6	6310	6310	617	\$5,050
	1200	326T	WH0306EFA	72.0	93.0	6312	6312	916	\$7,901
40	3600	324TS	WH0402EFA	93.4	93.0	6312C3	6312C3	804	\$6,563
	1800	324T	WH0404EFA	94.8	95.0	6312	6312	790	\$6,626
	1200	364T	WH0406EFA	96.0	94.5	6215	6312	1193	\$10,316
50	3600	326TS	WH0502EFA	114.0	93.6	6312C3	6312C3	891	\$8,758
	1800	326T	WH0504EFA	118.0	95.0	6312	6312	916	\$7,878
	1200	365T	WH0506EFA	120.0	94.5	6215	6312	1266	\$11,279
60	3600	364TS	WH0602EFA	136.0	94.1	6312C3	6312C3	1074	\$10,449
	1800	364T	WH0604EFA	143.0	95.0	6215	6312	1193	\$10,449
	1200	404T	WH0606EFA	148.0	95.0	6318	6313	1425	\$13,169
75	3600	365TS	WH0752EFA	168.0	94.5	6312C3	6312C3	1125	\$13,484
	1800	365T	WH0754EFA	180.0	95.4	6215	6312	1266	\$12,533
	1200	405T	WH0756EFA	181.0	95.0	6318	6313	1755	\$15,485
100	3600	405TS	WH1002EFA	228.0	94.5	6313C3	6313C3	1722	\$17,489
	1800	405T	WH1004EFA	240.0	95.4	6318	6313	1755	\$15,485
	1200	444T	WH1006EFA	242.0	95.0	6320	6318	2274	\$20,438
125	3600	444TS	WH1252EFI	290.0	95.0	6314C3	6314C3	2233	\$23,175
	1800	444T	WH1254EFI	286.0	95.8	6320	6318	2274	\$21,490
	1200	445T	WH1256EFI	300.0	95.4	6320	6318	2463	\$25,703
150	3600	445TS	WH1502EFI	346.0	95.0	6314C3	6314C3	2291	\$26,861
	1800	445T	WH1504EFI	338.0	95.8	6320	6318	2463	\$26,123
	1200	447T	WH1506EFI	356.0	95.8	6320	6318	3110	\$32,866
200	3600	447TS	WH2002EFB	228.0	95.4	6314C3	6314C3	2892	\$30,759
	1800	447T	WH2004EFB	220.0	96.2	6320	6318	3110	\$30,549

For 575/3/60, change model number and amps; other items including price remain the same as 460/3/60.

F/L Amps are at 230V except for 200HP and above, which are at 460V

MODELS ENDING IN "EFA" ARE USABLE ON 200 VOLT

Weights are estimates.

TOTALLY ENCLOSED FAN COOLED FRAMES: 143T - 447T

3 PHASE, 60HZ, 230/460V

NEMA DESIGN B, CLASS F INSULATION, 40 DEGREE C AMBIENT

HAZARDOUS LOCATIONS, DIV. I, CLASS I, GROUP D only

NEMA Premium Efficiency



HP	RPM	FRAME	MODEL NO.	230V F/L AMPS	NOM. EFF.	BEARINGS		WEIGHT LBS.	LIST PRICE
						Drive End	O. D. End		
3/4	1200	143T	WH3P46XFA	2.7	82.5	6205ZZ	6205ZZ	86	\$778
1	1800	143T	WH0014XFA	2.8	86.5	6205ZZ	6205ZZ	86	\$759
	1200	145T	WH0016XFA	3.4	84.0	6205ZZ	6205ZZ	95	\$879
1.5	3600	143T	WH1Y52XFA	3.8	85.5	6205ZZ	6205ZZ	86	\$879
	1800	145T	WH1Y54XFA	4.2	87.5	6205ZZ	6205ZZ	95	\$817
	1200	182T	WH1Y56XFA	4.8	87.5	6207ZZ	6206ZZ	146	\$937
2	3600	145T	WH0022XFA	5.0	86.5	6205ZZ	6205ZZ	93	\$900
	1800	145T	WH0024XFA	5.6	87.5	6205ZZ	6205ZZ	93	\$855
	1200	184T	WH0026XFA	5.8	88.5	6207ZZ	6206ZZ	169	\$1,096
3	3600	182T	WH0032XFA	7.2	88.5	6207ZZ	6206ZZ	146	\$1,019
	1800	182T	WH0034XFA	7.8	90.2	6207ZZ	6206ZZ	146	\$1,000
	1200	213T	WH0036XFA	8.6	89.5	6308ZZ	6208ZZ	249	\$1,299
5	3600	184T	WH0052XFA	11.6	90.2	6207ZZ	6206ZZ	169	\$1,217
	1800	184T	WH0054XFA	12.8	90.2	6207ZZ	6206ZZ	169	\$1,178
	1200	215T	WH0056XFA	13.8	89.5	6308ZZ	6208ZZ	280	\$1,797
7.5	3600	213T	WH7Y52XFA	18.0	90.2	6308ZZ	6208ZZ	249	\$1,635
	1800	213T	WH7Y54XFA	18.2	91.7	6308ZZ	6208ZZ	249	\$1,655
	1200	254T	WH7Y56XFA	20.2	91.7	6310ZZ	6208ZZ	392	\$2,294
10	3600	215T	WH0102XFA	23.0	91.7	6308ZZ	6208ZZ	280	\$1,836
	1800	215T	WH0104XFA	23.8	91.7	6308ZZ	6208ZZ	280	\$1,914
	1200	256T	WH0106XFA	26.4	91.7	6310ZZ	6208ZZ	453	\$2,933
15	3600	254T	WH0152XFA	34.6	91.0	6310ZZ	6208ZZ	392	\$2,313
	1800	254T	WH0154XFA	37.0	92.4	6310ZZ	6208ZZ	392	\$2,514
	1200	284T	WH0156XFA	38.8	92.4	6310	6310	600	\$3,889
20	3600	256T	WH0202XFA	46.0	91.0	6310ZZ	6208ZZ	453	\$3,091
	1800	256T	WH0204XFA	49.0	93.0	6310ZZ	6208ZZ	453	\$3,173
	1200	286T	WH0206XFA	51.0	92.4	6310	6310	617	\$4,788
25	3600	284TS	WH0252XFA	57.4	91.7	6310C3	6310C3	589	\$3,909
	1800	284T	WH0254XFA	60.0	93.6	6310	6310	600	\$3,990
	1200	324T	WH0256XFA	60.4	93.0	6312	6312	790	\$5,788

For 575/3/60, change model number and amps; other items including price remain the same as 460/3/60.

MODELS ENDING IN "XFA" ARE USABLE ON 200 VOLT

Weights are estimates.

TOTALLY ENCLOSED FAN COOLED FRAMES: 143T - 447T

3 PHASE, 60HZ, 230/460V

NEMA DESIGN B, CLASS F INSULATION, 40 DEGREE C AMBIENT

HAZARDOUS LOCATIONS, DIV. I, CLASS I, GROUP D only

NEMA Premium Efficiency



HP	RPM	FRAME	MODEL NO.	230V F/L AMPS	NOM. EFF.	BEARINGS		WEIGHT LBS.	LIST PRICE
						Drive End	O. D. End		
30	3600	286TS	WH0302XFA	68.2	92.4	6310C3	6310C3	626	\$4,489
	1800	286T	WH0304XFA	72.0	93.6	6310	6310	617	\$4,591
	1200	326T	WH0306XFA	72.0	93.0	6312	6312	916	\$7,183
40	3600	324TS	WH0402XFA	93.4	93.0	6312C3	6312C3	804	\$5,966
	1800	324T	WH0404XFA	94.8	95.0	6312	6312	790	\$6,024
	1200	364T	WH0406XFA	96.0	94.5	6215	6312	1193	\$9,378
50	3600	326TS	WH0502XFA	114.0	93.6	6312C3	6312C3	891	\$7,962
	1800	326T	WH0504XFA	118.0	95.0	6312	6312	916	\$7,162
	1200	365T	WH0506XFA	120.0	94.5	6215	6312	1266	\$10,254
60	3600	364TS	WH0602XFA	136.0	94.1	6312C3	6312C3	1074	\$9,499
	1800	364T	WH0604XFA	143.0	95.0	6215	6312	1193	\$9,499
	1200	404T	WH0606XFA	148.0	95.0	6318	6313	1425	\$11,972
75	3600	365TS	WH0752XFA	168.0	94.5	6312C3	6312C3	1125	\$12,258
	1800	365T	WH0754XFA	180.0	95.4	6215	6312	1266	\$11,394
	1200	405T	WH0756XFA	181.0	95.0	6318	6313	1755	\$14,077
100	3600	405TS	WH1002XFA	228.0	94.5	6313C3	6313C3	1722	\$15,899
	1800	405T	WH1004XFA	240.0	95.4	6318	6313	1755	\$14,077
	1200	444T	WH1006XFA	242.0	95.0	6320	6318	2274	\$18,580
125	3600	444TS	WH1252XFI	290.0	95.0	6314C3	6314C3	2233	\$21,068
	1800	444T	WH1254XFI	286.0	95.8	6320	6318	2274	\$19,536
	1200	445T	WH1256XFI	300.0	95.4	6320	6318	2463	\$23,366
150	3600	445TS	WH1502XFI	346.0	95.0	6314C3	6314C3	2291	\$24,419
	1800	445T	WH1504XFI	338.0	95.8	6320	6318	2463	\$23,748
	1200	447T	WH1506XFI	356.0	95.8	6320	6318	3110	\$29,878
200	3600	447TS	WH2002XFI	228.0	95.4	6314C3	6314C3	2892	\$27,963
	1800	447T	WH2004XFI	220.0	96.2	6320	6318	3110	\$27,772

For 575/3/60, change model number and amps; other items including price remain the same as 460/3/60.

F/L Amps are at 230V except for 200HP and above, which are at 460V

MODELS ENDING IN "XFA" ARE USABLE ON 200 VOLT

Weights are estimates.

KILN DUTY MOTORS NEMA Premium

FRAMES: 215T - 326T

3/60/460V 1.0 S.F., AMBIENT 115 DEGREE C, EPOXY COATED, INVERTER DUTY

TERMINAL LEAD LENGTH: 10 FEET x 3

DC-44 GREASE



HP	RPM	Encl.	FRAME	MODEL NO.	460 F. L. AMPS	NOM. EFF.	BEARINGS		WEIGHT LBS.	LIST PRICE
							Drive End	O. D. End		
5	1200	ODP	215T	WH0056KFB	7.2	90.2	6308ZC3	6208ZC3	176	\$1,448
	900	ODP	254T	WH0058KFB	8.0	89.5	6310ZC3	6208ZC3	236	\$2,778
7.5	1200	ODP	254T	WH7Y56KFB	10.5	91.7	6310ZC3	6208ZC3	236	\$2,121
	900	ODP	256T	WH7Y58KFB	11.5	90.0	6310ZC3	6208ZC3	310	\$3,317
10	1200	ODP	256T	WH0106KFB	14.2	91.7	6310ZC3	6208ZC3	310	\$2,361
	900	ODP	284T	WH0108KFB	15.1	90.2	6312C3	6212C3	380	\$3,626
15	1200	ODP	284T	WH0156KFB	19.3	92.4	6312C3	6212C3	380	\$2,987
	900	ODP	286T	WH0158KFB	22.3	90.2	6312C3	6212C3	446	\$4,816
20	1200	ODP	286T	WH0206KFB	25.7	92.4	6312C3	6212C3	446	\$3,555
	900	ODP	324T	WH0208KFB	29.0	91.0	6312C3	6212C3	527	\$5,653
25	1200	ODP	324T	WH0256KFB	32.3	93.0	6312C3	6212C3	527	\$4,338
	900	ODP	326T	WH0258KFB	35.8	91.0	6312C3	6212C3	617	\$6,623

FRAMES: 215T - 326T

3/60/460V 1.15 S.F., AMBIENT 115 DEGREE C, EPOXY COATED, INVERTER DUTY

TERMINAL LEAD LENGTH: 10 FEET x 3

DC-44 GREASE



HP	RPM	Encl.	FRAME	MODEL NO.	460 F. L. AMPS	NOM. EFF.	BEARINGS		WEIGHT LBS.	LIST PRICE
							Drive End	O. D. End		
5	1200	ODP	215T	WH0056AFB	7.2	90.2	6308ZC3	6208ZC3	176	\$1,520
	900	ODP	254T	WH0058AFB	8.0	89.5	6310ZC3	6208ZC3	236	\$2,917
7.5	1200	ODP	254T	WH7Y56AFB	10.5	91.7	6310ZC3	6208ZC3	236	\$2,227
	900	ODP	256T	WH7Y58AFB	11.5	90.0	6310ZC3	6208ZC3	310	\$3,483
10	1200	ODP	256T	WH0106AFB	14.2	91.7	6310ZC3	6208ZC3	310	\$2,479
	900	ODP	284T	WH0108AFB	15.1	90.2	6312C3	6212C3	380	\$3,807
15	1200	ODP	284T	WH0156AFB	19.3	92.4	6312C3	6212C3	380	\$3,136
	900	ODP	286T	WH0158AFB	22.3	90.2	6312C3	6212C3	446	\$5,057
20	1200	ODP	286T	WH0206AFB	25.7	92.4	6312C3	6212C3	446	\$3,733
	900	ODP	324T	WH0208AFB	29.0	91.0	6312C3	6212C3	527	\$5,936
25	1200	ODP	324T	WH0256AFB	32.3	93.0	6312C3	6212C3	527	\$4,555
	900	ODP	326T	WH0258AFB	35.8	91.0	6312C3	6212C3	617	\$6,954

Weights are estimate only.

KILN DUTY MOTORS NEMA Premium

FRAMES: 254T - 365T

3/60/460V 1.0 S.F., AMBIENT 135 DEGREE C, EPOXY COATED, INVERTER DUTY

TERMINAL LEAD LENGTH: 10 FEET x 3

DC-44 GREASE



HP	RPM	Encl.	FRAME	MODEL NO.	460 F. L. AMPS	NOM. EFF.	BEARINGS		WEIGHT LBS.	LIST PRICE
							Drive End	O. D. End		
5	1200	ODP	254T	WH0056YFB	6.9	90.2	6310ZC3	6208ZC3	236	\$1,707
	900	ODP	256T	WH0058YFB	7.7	89.5	6310ZC3	6208ZC3	310	\$2,998
7.5	1200	ODP	256T	WH7Y56YFB	10.0	91.7	6310ZC3	6208ZC3	310	\$2,690
	900	ODP	284T	WH7Y58YFB	11.2	90.2	6312C3	6212C3	380	\$4,105
10	1200	ODP	284T	WH0106YFB	13.1	91.7	6312C3	6212C3	380	\$3,417
	900	ODP	286T	WH0108YFB	14.1	91.0	6312C3	6212C3	446	\$4,439
15	1200	ODP	286T	WH0156YFB	18.6	92.4	6312C3	6212C3	446	\$3,767
	900	ODP	324T	WH0158YFB	21.2	91.0	6312C3	6212C3	527	\$5,650
20	1200	ODP	324T	WH0206YFB	24.6	93.0	6312C3	6212C3	527	\$5,138
	900	ODP	364T	WH0208YFB	27.6	91.7	6314C3	6213C3	750	\$6,569
25	1200	ODP	364T	WH0256YFB	30.5	93.6	6314C3	6213C3	750	\$6,149
	900	ODP	365T	WH0258YFB	34.1	91.7	6314C3	6213C3	838	\$7,445

FRAMES: 254T - 365T

3/60/460V 1.15 S.F., AMBIENT 135 DEGREE C, EPOXY COATED, INVERTER DUTY

TERMINAL LEAD LENGTH: 10 FEET x 3

DC-44 GREASE



HP	RPM	Encl.	FRAME	MODEL NO.	460 F. L. AMPS	NOM. EFF.	BEARINGS		WEIGHT LBS.	LIST PRICE
							Drive End	O. D. End		
5	1200	ODP	254T	WH0056CFB	6.9	90.2	6310ZC3	6208ZC3	236	\$1,792
	900	ODP	256T	WH0058CFB	7.7	89.5	6310ZC3	6208ZC3	310	\$3,148
7.5	1200	ODP	256T	WH7Y56CFB	10.0	91.7	6310ZC3	6208ZC3	310	\$2,825
	900	ODP	284T	WH7Y58CFB	11.2	90.2	6312C3	6212C3	380	\$4,310
10	1200	ODP	284T	WH0106CFB	13.1	91.7	6312C3	6212C3	380	\$3,588
	900	ODP	286T	WH0108CFB	14.1	91.0	6312C3	6212C3	446	\$4,661
15	1200	ODP	286T	WH0156CFB	18.6	92.4	6312C3	6212C3	446	\$3,955
	900	ODP	324T	WH0158CFB	21.2	91.0	6312C3	6212C3	527	\$5,933
20	1200	ODP	324T	WH0206CFB	24.6	93.0	6312C3	6212C3	527	\$5,395
	900	ODP	364T	WH0208CFB	27.6	91.7	6314C3	6213C3	750	\$6,897
25	1200	ODP	364T	WH0256CFB	30.5	93.6	6314C3	6213C3	750	\$6,456
	900	ODP	365T	WH0258CFB	34.1	91.7	6314C3	6213C3	838	\$7,817

Weights are estimate only.

JM CLOSED COUPLED PUMP MOTORS

TOTALLY-ENCLOSED FAN-COOLED FRAMES: 143 - 326

EPAct EFFICIENCY, C-FACE FOOT MOUNTED, INVERTER DUTY, NEMA DESIGN B, CONTINUOUS DUTY

3 PHASE, 60HZ, 230/460 VOLT, 1.15 S.F., CLASS F INSULATION, 40 DEGREE C AMBIENT

JM MOTORS NOT LISTED CAN BE CUSTOM BUILT TO ORDER -- CONTACT TATUNG FOR FACTORY QUOTES



HP	RPM	FRAME	MODEL NO.	230V F/L AMPS	NOM. EFF.	BEARINGS		WEIGHT LBS.	LIST PRICE
						Drive End	O. D. End		
1	1800	143JM	WJ0014FJA	2.9	82.5	6206ZZ	6205ZZ	48	\$482
1.5	3600	143JM	WJ1Y52FJA	4.4	82.5	6206ZZ	6205ZZ	52	\$462
	1800	145JM	WJ1Y54FJA	4.2	84.0	6206ZZ	6205ZZ	59	\$517
2	3600	145JM	WJ0022FJA	5.2	84.0	6206ZZ	6205ZZ	54	\$535
	1800	145JM	WJ0024FJA	5.6	84.0	6206ZZ	6205ZZ	56	\$551
3	3600	182JM	WJ0032FJA	7.2	85.5	6207ZZ	6206ZZ	88	\$641
	1800	182JM	WJ0034FJA	8.0	87.5	6207ZZ	6206ZZ	94	\$623
5	3600	184JM	WJ0052FJA	11.8	87.5	6207ZZ	6206ZZ	100	\$799
	1800	184JM	WJ0054FJA	12.8	87.5	6207ZZ	6206ZZ	92	\$730
7.5	3600	213JM	WJ7Y52FJA	18.8	88.5	6210ZZ	6208ZZ	166	\$978
	1800	213JM	WJ7Y54FJA	18.9	89.5	6210ZZ	6208ZZ	167	\$961
10	3600	215JM	WJ0102FJA	24.0	89.5	6210ZZ	6208ZZ	188	\$1,154
	1800	215JM	WJ0104FJA	25.2	89.5	6210ZZ	6208ZZ	196	\$1,136
15	3600	254JM	WJ0152FJA	35.2	90.2	6310ZZ	6208ZZ	290	\$1,632
	1800	254JM	WJ0154FJA	36.6	91.0	6310ZZ	6208ZZ	290	\$1,598
20	3600	256JM	WJ0202FJA	47.0	90.2	6310ZZ	6208ZZ	325	\$2,076
	1800	256JM	WJ0204FJA	49.2	91.0	6310ZZ	6208ZZ	325	\$2,024
25	3600	284JM	WJ0252FJA	59.0	91.0	6310ZZ	6210ZZ	430	\$2,483
	1800	284JM	WJ0254FJA	62.0	92.4	6310ZZ	6210ZZ	430	\$2,379
30	3600	286JM	WJ0302FJA	70.0	91.0	6311	6210	475	\$3,016
	1800	286JM	WJ0304FJA	73.0	92.4	6311	6210	475	\$2,858
40	3600	324JM	WJ0402FJA	96.0	91.7	6312	6212	650	\$3,894
	1800	324JM	WJ0404FJA	96.0	93.0	6312	6312	650	\$3,724
50	3600	326JM	WJ0502FJA	120	92.4	6312	6212	710	\$5,170
	1800	326JM	WJ0504FJA	118	93.0	6312	6212	710	\$4,741

For 575/3/60, change model number and amps; other items including price remain the same as 460/3/60.

ALL MODELS ARE USABLE ON 200 VOLT

Weights are estimates.

JM CLOSED COUPLED PUMP MOTORS

TOTALLY-ENCLOSED FAN-COOLED FRAMES: 143 - 326

NEMA PREMIUM EFFICIENCY, C-FACE FOOT MOUNTED, INVERTER DUTY, NEMA DESIGN B, CONTINUOUS DUTY
3 PHASE, 60HZ, 230/460 VOLT, 1.15 S.F., CLASS F INSULATION, 40 DEGREE C AMBIENT

JM MOTORS NOT LISTED CAN BE CUSTOM BUILT TO ORDER -- CONTACT TATUNG FOR FACTORY QUOTES



HP	RPM	FRAME	MODEL NO.	230V F/L AMPS	NOM. EFF.	BEARINGS		WEIGHT LBS.	LIST PRICE
						Drive End	O. D. End		
1	1800	143JM	WH0014FJA	2.8	85.5	6206ZZ	6205ZZ	52	\$554
1.5	3600	143JM	WH1Y52FJA	3.8	84.0	6206ZZ	6205ZZ	52	\$531
	1800	145JM	WH1Y54FJA	4.2	86.5	6206ZZ	6205ZZ	58	\$595
2	3600	145JM	WH0022FJA	5.0	85.5	6206ZZ	6205ZZ	58	\$615
	1800	145JM	WH0024FJA	5.6	86.5	6206ZZ	6205ZZ	58	\$634
3	3600	182JM	WH0032FJA	7.2	86.5	6207ZZ	6206ZZ	96	\$737
	1800	182JM	WH0034FJA	7.8	89.5	6207ZZ	6206ZZ	96	\$716
5	3600	184JM	WH0052FJA	11.6	88.5	6207ZZ	6206ZZ	106	\$919
	1800	184JM	WH0054FJA	12.8	89.5	6207ZZ	6206ZZ	106	\$840
7.5	3600	213JM	WH7Y52FJA	18.0	89.5	6210ZZC3	6208ZZC3	168	\$1,125
	1800	213JM	WH7Y54FJA	18.2	91.7	6210ZZC3	6208ZZC3	168	\$1,105
10	3600	215JM	WH0102FJA	23.0	90.2	6210ZZC3	6208ZZC3	192	\$1,327
	1800	215JM	WH0104FJA	23.8	91.7	6210ZZC3	6208ZZC3	192	\$1,306
15	3600	254JM	WH0152FJA	34.6	91.0	6310ZZ	6208ZZ	290	\$1,877
	1800	254JM	WH0154FJA	37.0	92.4	6310ZZ	6208ZZ	290	\$1,838
20	3600	256JM	WH0202FJA	46.0	91.0	6310ZZ	6208ZZ	325	\$2,387
	1800	256JM	WH0204FJA	49.0	93.0	6310ZZ	6208ZZ	325	\$2,328
25	3600	284JM	WH0252FJA	57.4	91.7	6311	6210	430	\$2,855
	1800	284JM	WH0254FJA	60.0	83.6	6311	6210	445	\$2,736
30	3600	286JM	WH0302FJA	68.2	91.7	6311	6210	465	\$3,468
	1800	286JM	WH0304FJA	72.0	93.6	6311	6210	475	\$3,287
40	3600	324JM	WH0402FJA	93.4	92.4	6312C3	6212C3	640	\$4,478
	1800	324JM	WH0404FJA	94.8	94.1	6312	6212	650	\$4,283
50	3600	326JM	WH0502FJA	114	93.0	6312C3	6212C3	710	\$5,946
	1800	326JM	WH0504FJA	118	94.5	6312	6212	716	\$5,452

For 575/3/60, change model number and amps; other items including price remain the same as 460/3/60.

ALL MODELS ARE USABLE ON 200 VOLT

Weights are estimates.

JP CLOSED COUPLED PUMP MOTORS

TOTALLY-ENCLOSED FAN-COOLED FRAMES: 143 - 326

NEMA PREMIUM EFFICIENCY, C-FACE FOOT MOUNTED, INVERTER DUTY, NEMA DESIGN B, CONTINUOUS DUTY
3 PHASE, 60HZ, 230/460 VOLT, 1.15 S.F., CLASS F INSULATION, 40 DEGREE C AMBIENT

JP MOTORS CAN BE CUSTOM BUILT TO ORDER -- CONTACT TATUNG FOR FACTORY QUOTE



HP	RPM	FRAME	MODEL NO.	230V F/L AMPS	NOM. EFF.	BEARINGS		WEIGHT LBS.	LIST PRICE
						Drive End	O. D. End		
1	1800	143JP	WH0014FKA	2.8	85.5	6206ZZ	6205ZZ	52	\$554
1.5	3600	143JP	WH1Y52FKA	3.8	84.0	6206ZZ	6205ZZ	52	\$531
	1800	145JP	WH1Y54FKA	4.2	86.5	6206ZZ	6205ZZ	58	\$595
2	3600	145JP	WH0022FKA	5.0	85.5	6206ZZ	6205ZZ	58	\$615
	1800	145JP	WH0024FKA	5.6	86.5	6206ZZ	6205ZZ	58	\$634
3	3600	182JP	WH0032FKA	7.2	86.5	6207ZZ	6206ZZ	96	\$737
	1800	182JP	WH0034FKA	7.8	89.5	6207ZZ	6206ZZ	96	\$716
5	3600	184JP	WH0052FKA	11.6	88.5	6207ZZ	6206ZZ	106	\$919
	1800	184JP	WH0054FKA	12.8	89.5	6207ZZ	6206ZZ	106	\$840
7.5	3600	213JP	WH7Y52FKA	18.0	89.5	6210ZZC3	6208ZZC3	168	\$1,125
	1800	213JP	WH7Y54FKA	18.2	91.7	6210ZZC3	6208ZZC3	168	\$1,105
10	3600	215JP	WH0102FKA	23.0	90.2	6210ZZC3	6208ZZC3	192	\$1,327
	1800	215JP	WH0104FKA	23.8	91.7	6210ZZC3	6208ZZC3	192	\$1,306
15	3600	254JP	WH0152FKA	34.6	91.0	6310ZZ	6208ZZ	290	\$1,877
	1800	254JP	WH0154FKA	37.0	92.4	6310ZZ	6208ZZ	290	\$1,838
20	3600	256JP	WH0202FKA	46.0	91.0	6310ZZ	6208ZZ	325	\$2,387
	1800	256JP	WH0204FKA	49.0	93.0	6310ZZ	6208ZZ	325	\$2,328
25	3600	284JP	WH0252FKA	57.4	91.7	6311	6210	430	\$2,855
	1800	284JP	WH0254FKA	60.0	83.6	6311	6210	445	\$2,736
30	3600	286JP	WH0302FKA	68.2	91.7	6311	6210	465	\$3,468
	1800	286JP	WH0304FKA	72.0	93.6	6311	6210	475	\$3,287
40	3600	324JP	WH0402FKA	93.4	92.4	6312C3	6212C3	640	\$4,478
	1800	324JP	WH0404FKA	94.8	94.1	6312	6212	650	\$4,283
50	3600	326JP	WH0502FKA	114	93.0	6312C3	6212C3	710	\$5,946
	1800	326JP	WH0504FKA	118	94.5	6312	6212	716	\$5,452

For 575/3/60, change model number and amps; other items including price remain the same as 460/3/60.

ALL MODELS ARE USABLE ON 200 VOLT

Weights are estimates.

OIL WELL PUMP MOTORS

OPEN DRIP PROOF FRAMES: 215T - 445T

60HZ, 230/460/796 VOLT, F-2 ASSEMBLY (WITH F-1 INTERCHANGEABILITY)

NEMA DESIGN D, HIGH TORQUE HIGH SLIP, WINDING THERMAL PROTECTORS

GROUND LUG ON FRAME, CLASS F INSULATION

INVERTER DUTY, 40 DEGREE C AMBIENT, 1.15 S.F.



HP	RPM	FRAME	MODEL NO.	460V F/L AMPS	NOM. EFF.	BEARINGS		WEIGHT LBS.	LIST PRICE
						Drive End	O. D. End		
5	1200	215T	WD0056DWVT	7.4	84.0	6308ZZ	6208ZZ	157	\$1,171
	900	254T	WD0058DWVT	8.6	84.0	6310ZZ	6208ZZ	230	\$1,847
7.5	1200	254T	WD7Y56DWVT	10.4	85.0	6310ZZ	6208ZZ	230	\$1,430
	900	256T	WD7Y58DWVT	13.2	84.5	6310ZZ	6208ZZ	297	\$2,304
10	1200	256T	WD0106DWVT	13.1	85.5	6310ZZ	6208ZZ	297	\$1,847
	900	284T	WD0108DWVT	20.8	85.0	6312ZZ	6211ZZ	360	\$2,960
15	1200	284T	WD0156DWVT	19.5	86.0	6312ZZ	6211ZZ	360	\$2,483
	900	286T	WD0158DWVT	30.8	86.0	6312ZZ	6211ZZ	390	\$3,754
20	1200	286T	WD0206DWVT	26.0	84.5	6312ZZ	6211ZZ	390	\$3,017
	900	324T	WD0208DWVT	33.0	87.0	6312	6312	510	\$4,304
25	1200	324T	WD0256DWVT	32.0	88.0	6312	6312	510	\$3,550
	900	326T	WD0258DWVT	36.4	87.0	6312	6312	550	\$4,862
30	1200	326T	WD0306DWVT	38.7	88.5	6312	6312	550	\$4,073
	900	364T	WD0308DWBT	52.0	87.5	6314	6313	640	\$6,002
40	1200	364T	WD0406DWBT	53.0	88.5	6314	6313	640	\$5,211
	900	365T	WD0408DWBT	55.0	87.5	6314	6313	700	\$6,890
50	1200	365T	WD0506DWBT	64.0	89.5	6314	6313	700	\$6,136
	900	404T	WD0508DWBT	62.0	88.5	6317	6313	850	\$8,430
60	1200	404T	WD0606DWBT	76.0	89.5	6317	6313	850	\$7,492
	900	405T	WD0608DWBT	74.0	88.5	6317	6313	950	\$10,303
75	1200	405T	WD0756DWBT	91.0	90.5	6317	6313	950	\$9,310
	900	444T	WD0758DWBT	92.0	89.5	6318	6318	1320	\$12,214
100	1200	444T	WD1006DWBT	122	90.0	6318	6318	1320	\$11,613
	900	445T	WD1008DWBT	122	89.5	6318	6318	1500	\$14,573
125	1200	445T	WD1256DWBT	153	90.5	6318	6318	1500	\$13,860
150	1200	445T	WD1506DWBT	182	91.0	6318	6318	1500	\$17,665

For 575/3/60, change model number and amps; other items including price remain the same as 460/3/60.

Model numbers ending in "DWBT" are three lead 460V only.

Weights are estimates.

OIL WELL PUMP MOTORS

TOTALLY-ENCLOSED FAN-COOLED FRAMES: 215T - 449T

60HZ, 230/460/796V (326T & Below), 460V (364T & Above), GROUND LUG ON FRAME

NEMA DESIGN D, HIGH TORQUE HIGH SLIP, WINDING THERMAL PROTECTORS

CLASS F INSULATION, F-2 ASSEMBLY (WITH F-1 INTERCHANGEABILITY UP TO 365T)

INVERTER DUTY, 40 DEGREE C AMBIENT, 1.15 S.F.



HP	RPM	FRAME	MODEL NO.	460V F/L AMPS	NOM. EFF.	BEARINGS		WEIGHT LBS.	List Price
						Drive End	O. D. End		
5	1200	215T	WD0056FWVT	6.9	85.0	6308ZZ	6208ZZ	181	\$1,340
7.5	1200	254T	WD7Y56FWVT	10.3	86.5	6310ZZ	6208ZZ	262	\$1,737
10	1200	256T	WD0106FWVT	13.5	86.5	6310ZZ	6208ZZ	321	\$2,367
15	1200	284T	WD0156FWVT	20.2	87.0	6310ZZ	6210ZZ	480	\$2,940
20	1200	286T	WD0206FWVT	26.5	87.5	6310ZZ	6210ZZ	530	\$3,633
25	1200	324T	WD0256FWVT	32.0	88.5	6312	6212	645	\$4,326
30	1200	326T	WD0306FWVT	38.3	88.5	6312	6212	710	\$5,541
40	1200	365T	WD0406FWBT	51.0	89.0	6315	6312	1010	\$6,392
	1200	364/5T	WD0406FWBTN	50.7	89.0	6314ZC3	6314ZC3	836	\$6,392
50	1200	404T	WD0506FWBT	64.0	89.0	NU218	6313	1250	\$7,519
	1200	404/5T	WD0506FWBTN	63.4	89.0	NU316C3	6316ZC3	1270	\$7,519
60	1200	405T	WD0606FWBT	75.0	89.5	NU218	6313	1500	\$9,339
	1200	404/5T	WD0606FWBTN	74.8	89.5	NU316C3	6316ZC3	1270	\$9,339
75	1200	444T	WD0756FWBT	91.0	91.0	NU220	6315	1900	\$12,307
	1200	444/5T	WD0756FWBTN	90.8	91.0	NU320C3	6316ZC3	1810	\$12,307
100	1200	445T	WD1006FWBT	121.0	91.0	NU220	6315	2050	\$17,363
	1200	445T	WD1006FWBTN	121.0	91.0	NU320C3	6316ZC3	1855	\$17,363
125	1200	447T	WD1256FWBT	148.0	92.4	NU220	6315	2600	\$19,436
	1200	447/9T	WD1256FWBTN	148.0	92.4	NU320C3	6316ZC3	2607	\$19,436
150	1200	449T	WD1506FWBC	175.0	93.0	NU320	6318	3000	\$31,830

For 575/3/60, change model number and amps; other items including price remain the same as 460/3/60.

Model numbers ending in "FWBT" or "FWBC" are three lead 460V only.

Weights are estimates.

New S Series = Motor Model No. that ends in "N".

TS21FN-II SERIES MEDIUM VOLTAGE TEFC

FRAMES: N5007 - N5808

CAST IRON FRAME, 3 PHASE, 60HZ, 2300/4160 VOLT, CLASS F INSULATION, 1.0 S.F.

NEMA DESIGN B, CONTINUOUS DUTY, 40 DEGREE C AMBIENT

WINDING RTD'S (PT 100 OHM), SPACE HEATER: 1 PHASE 120V



HP	RPM	FRAME	MODEL NO.	4160V F. L. AMPS	NOM. EFF.	BEARINGS		WEIGHT LBS.	List Price
						Drive End	O. D. End		
250	3600	N5007/9S	WH2502FF7U	31.3	95.0	6218C3	6218C3	4000	\$35,242
	1800	N5007/9	WH2504FF7U	32.1	95.0	6222	6222	4150	\$32,039
	1200	N5007/9	WH2506FF7U	33.2	95.0	6222	6222	4150	\$37,206
300	3600	N5007/9S	WH3002FF7U	37.4	95.0	6218C3	6218C3	4000	\$38,352
	1800	N5007/9	WH3004FF7U	38.5	95.0	6222	6222	4150	\$34,866
	1200	N5007/9	WH3006FF7U	39.9	95.0	6222	6222	4150	\$39,534
350	3600	N5007/9S	WH3502FF7U	43.1	95.0	6218C3	6218C3	4000	\$40,746
	1800	N5007/9	WH3504FF7U	44.9	95.0	6222	6222	4150	\$37,042
	1200	N5010/11	WH3506FF7U	46.2	95.0	6222	6222	4500	\$45,072
400	3600	N5010/11S	WH4002FF7U	49.3	95.0	6218C3	6218C3	4300	\$47,490
	1800	N5010/11	WH4004FF7U	51.0	95.0	6222	6222	4500	\$43,173
	1200	N5010/11	WH4006FF7U	52.8	95.0	6222	6222	4500	\$48,749
450	3600	N5010/11S	WH4502FF7U	55.4	95.0	6218C3	6218C3	4300	\$47,806
	1800	N5010/11	WH4504FF7U	57.4	95.0	6222	6222	4500	\$43,460
	1200	N5807/8	WH4506FF7U	59.1	95.0	6224C3	6224C3	5500	\$51,504
500	3600	N5010/11S	WH5002FF7U	61.6	95.5	6218C3	6218C3	4300	\$51,884
	1800	N5010/11	WH5004FF7U	63.7	95.0	6222	6222	4500	\$47,167
	1200	N5807/8	WH5006FF7U	65.7	95.0	6224C3	6224C3	5500	\$55,358
600	3600	N5809/10S	WB6002FF7U	73.9	95.5	6218C3	6218C3	6400	\$63,478
	1800	N5807/8	WB6004FF7U	75.9	95.2	6224C3	6224C3	5500	\$57,704
	1200	N5809/10	WB6006FF7U	78.1	95.2	6224C3	6224C3	6700	\$65,322
700	3600	N5809/10S	WB7002FF7U	84.8	96.0	6218C3	6218C3	6400	\$67,436
	1800	N5809/10	WB7004FF7U	88.2	95.5	6224C3	6224C3	6700	\$61,307
	1200	N6308/10*	WB7006FF7U	89.8	95.5	6224C3	6224C3	9100	\$71,504
800	3600	N6308/10S*	WB8002FF7U	96.4	96.0	6218C3	6218C3	8450	\$82,472
	1800	N6308/10*	WB8004FF7U	100	95.5	6224C3	6224C3	9100	\$74,970
	1200	N6308/10*	WB8006FF7U	103	95.6	6224C3	6224C3	9100	\$76,301
900	3600	N6308/10S*	WB9002FF7U	108	96.0	6218C3	6218C3	8450	\$82,615
	1800	N6308/10*	WB9004FF7U	113	95.6	6224C3	6224C3	9100	\$75,104
	1200	N6308/10*	WB9006FF7U	115	95.7	6224C3	6224C3	9100	\$82,039
1000	3600	N6308/10S*	WB10N2FF7U	121	96.0	09-100	09-100	10250	\$89,212
	1800	N6308/10*	WB10N4FF7U	124	95.7	6224C3	6224C3	9100	\$81,104
	1200	N6808/10*	WB10N6FF7U	127	95.7	6226C3	6224C3	10650	\$94,606

PLEASE SPECIFY ROTATION ON 2 POLE MOTORS.

Larger sizes can be custom built to order; please contact Tatung for factory quote.

For direct coupled. Data for belt drive on request. Weights are estimates.

* = Copper Bar Rotor

TS21DN SERIES MEDIUM VOLTAGE ODP

FRAMES: 505 - 6310

CAST IRON FRAME, 3 PHASE, 60HZ, 2300/4160 VOLT, CLASS F INSULATION, 1.0 S.F.

NEMA DESIGN B, CONTINUOUS DUTY, 40 DEGREE C AMBIENT

WINDING RTD'S(P.T 100 OHM), SPACE HEATER: 1 PHASE 120V



HP	RPM	FRAME	MODEL NO.	4160V F. L. AMPS	NOM. EFF.	BEARINGS		WEIGHT LBS.	List Price
						Drive End	O. D. End		
600	3600	5810NS	WB6002DF7E	74.7	94.5	6218C3	6218C3	4400	\$62,500
	1800	5810N	WB6004DF7E	76.4	94.5	6224C3	6224C3	4400	\$54,688
	1200	5810N	WB6006DF7E	77.8	94.5	6224C3	6224C3	4400	\$64,844
700	3600	5810NS	WB7002DF7E	87.2	94.5	6218C3	6218C3	4400	\$67,969
	1800	5810N	WB7004DF7E	89.2	94.5	6224C3	6224C3	4400	\$60,156
	1200	5810N	WB7006DF7E	90.8	94.5	6224C3	6224C3	4400	\$69,531
800	3600	5810NS	WB8002DF7E	98.5	95.0	6218C3	6218C3	4400	\$74,219
	1800	5810N	WB8004DF7E	101	95.0	6224C3	6224C3	4400	\$66,406
	1200	5810N	WB8006DF7E	103	95.0	6224C3	6224C3	4400	\$76,172
900	3600	5810NS	WB9002DF7E	111	95.0	6218C3	6218C3	4400	\$83,984
	1800	5810N	WB9004DF7E	114	95.0	6224C3	6224C3	4400	\$74,219
	1200	6310N	WB9006DF7E	115	95.0	6224C3	6224C3	7500	\$93,750
1000	3600	5810NS	WB10N2DF7E	122	95.5	6218C3	6218C3	4400	\$93,750
	1800	5810N	WB10N4DF7E	125	95.5	6224C3	6224C3	4400	\$82,031
	1200	6310N	WB10N6DF7E	126	95.5	6224C3	6224C3	7500	\$99,609

PLEASE SPECIFY ROTATION ON 2 POLE MOTORS.

Larger sizes can be custom built to order; please contact Tatung for factory quote.

For direct coupled. Data for belt drive on request. Weights are estimates.

TOTALLY- ENCLOSED FAN-COOLED FRAMES: 445T - N5810UZ

INPRO SEAL ON THE DRIVE END

BEARING LOCK NUT FOR BOTH HORIZONTAL AND VERTICAL APPLICATION

NEMA DESIGN C TORQUE, INVERTER DUTY

SHAFT STEEL IS 4140

CAST IRON CONDUIT BOX



HP	RPM	FRAME	MODEL NO.	460 F. L. AMPS	NOM. EFF.	BEARINGS		WEIGHT LBS.	LIST PRICE
						Drive End	O. D. End		
125	1200	445T	WC1256HFIT	156	94.1	NU220	6315	1800	\$13,574
	1200	444/5T	WC1256HFBTN	163	95.0	NU318	6316ZC3	1800	\$14,388
	900	447/9TZ	WC1258HFBTN	177	95.0	NU320	6316ZC3	2150	\$18,656
	900	505UZ	WC1258HFIT	165	93.6	NU322	6318	2700	\$19,469
	900	505UZ	WC1258HFBTJ	172	95.0	NU322	6318	2700	\$20,637
150	1800	445T	WC1504HFIT	176	95.0	NU220	6315	1800	\$13,738
	1800	444/5T	WC1504HFBTN	186	95.8	NU318	6316ZC3	1800	\$14,562
	1200	447TZ	WC1506HFIT	183	95.0	NU220	6315	2150	\$15,523
	1200	447/9TZ	WC1506HFBTN	193	95.8	NU320	6316ZC3	2150	\$16,454
	900	447/9TZ	WC1508HFBTN	208	94.5	NU320	6316ZC3	2150	\$21,571
	900	505UZ	WC1508HFIT	198	93.6	NU322	6318	2700	\$29,320
	900	505UZ	WC1508HFBTJ	204	94.5	NU322	6318	2700	\$31,079
200	1800	447TZ	WC2004HFBT	232	95.0	NU220	6315	2150	\$16,422
	1800	447/9TZ	WC2004HFBTN	244	96.2	NU320	6316ZC3	2150	\$17,407
	1200	505UZ	WC2006HFBT	244	95.0	NU322	6318	2700	\$21,102
	1200	447/9TZ	WC2006HFBTN	245	95.8	NU320	6316ZC3	2100	\$20,131
	1200	505UZ	WC2006HFBTJ	251	95.8	NU322	6318	2700	\$22,368
	900	5806/7UZ	WC2008HFBT	269	94.1	NU324	6320	5280	\$36,345
	900	5806/7UZ	WC2008HFBTJ	271	95.0	NU324	6320	5280	\$38,844
250	1800	447/9TZ	WC2504HFBTN	301	96.0	NU320	6316ZC3	2150	\$21,560
	1800	505UZ	WC2504HFBT	294	94.1	NU322	6318	2700	\$25,289
	1800	505UZ	WC2504HFBTJ	310	96.0	NU322	6318	2700	\$26,806
	1200	447/9TZ	WC2506HFBTN	314	95.8	NU320	6316ZC3	2150	\$26,140
	1200	5806/7UZ	WC2506HFBT	304	95.0	NU324	6320	5280	\$32,602
	1200	5806/7UZ	WC2506HFBTJ	314	95.8	NU324	6320	5280	\$34,558
	900	5806/7UZ	WC2508HFBT	337	94.0	NU324	6320	5280	\$40,496
	900	5806/7UZ	WC2508HFBTJ	337	95.6	NU324	6320	5280	\$42,926

For 575/3/60, change model number and amps; other items including price remain the same as 460/3/60.

Weights are estimate only.

TOTALLY- ENCLOSED FAN-COOLED FRAMES: 444/5T - N5810UZ

INPRO SEAL ON THE DRIVE END

BEARING LOCK NUT FOR BOTH HORIZONTAL AND VERTICAL APPLICATION

NEMA DESIGN C TORQUE, INVERTER DUTY

SHAFT STEEL IS 4140

CAST IRON CONDUIT BOX



HP	RPM	FRAME	MODEL NO.	460 F. L. AMPS	NOM. EFF.	BEARINGS		WEIGHT LBS.	LIST PRICE
						Drive End	O. D. End		
300	1800	447/9TZ	WC3004HFBTN	357	96.0	NU320	6316ZC3	2150	\$26,140
	1800	5806/7UZ	WC3004HFBT	346	95.0	NU324	6320	5280	\$30,480
	1800	5806/7UZ	WC3004HFBTJ	357	96.0	NU324	6320	5280	\$32,309
	1200	5806/7UZ	WC3006HFBT	365	95.0	NU324	6320	5280	\$37,254
	1200	5806/7UZ	WC3006HFBTJ	372	96.0	NU324	6320	5280	\$39,489
350	1800	5806/7UZ	WC3504HFBT	404	95.4	NU324	6320	5280	\$35,391
	1800	5806/7UZ	WC3504HFBTJ	413	96.0	NU324	6320	5280	\$37,514
	1200	5806/7UZ	WC3506HFBT	424	95.0	NU324	6320	5280	\$41,934
	1200	5806/7UZ	WC3506HFBTJ	431	95.8	NU324	6320	5280	\$44,450
400	1800	5806/7UZ	WC4004HFBT	458	95.0	NU324	6320	5280	\$41,664
	1800	5806/7UZ	WC4004HFBTJ	470	96.2	NU324	6320	5280	\$44,164
	1200	N5807/8UZ	WC4006HFBT	481	95.0	NU324	6320	5390	\$47,094
	1200	N5807/8UZ	WC4006HFBTJ	492	95.8	NU324	6320	5390	\$49,920
450	1800	N5807/8UZ	WC4504HFBT	516	95.0	NU324	6320	5390	\$47,668
	1800	N5807/8UZ	WC4504HFBTJ	528	96.2	NU324	6320	5390	\$50,528
	1200	N5807/8UZ	WC4506HFBT	541	95.0	NU324	6320	5390	\$54,152
	1200	N5807/8UZ	WC4506HFBTJ	550	95.8	NU324	6320	5390	\$57,401
500	1800	N5807/8UZ	WC5004HFBT	573	95.0	NU324	6320	5390	\$51,102
	1800	N5807/8UZ	WC5004HFBTJ	587	96.2	NU324	6320	5390	\$54,168
	1200	N5807/8UZ	WC5006HFBT	600	95.0	NU324	6320	5390	\$58,730
	1200	N5807/8UZ	WC5006HFBTJ	611	95.8	NU324	6320	5390	\$62,254
600	1200	N5809/10UZ	WC6006HFBTJ	734	95.8	NU324	6320	6600	\$88,167

For 575/3/60, change model number and amps; other items including price remain the same as 460/3/60.

Weights are estimate only.

New S Series = Motor Model No. that ends in "N".

HARVEST SERIES VERTICAL HOLLOW SHAFT TEFC

PREMIUM EFFICIENCY, NEMA DESIGN B, FRAMES: 213TP - 449TP

1.15 SERVICE FACTOR CLASS F INSULATION, CLASS B, 3/60/460V FOR ABOVE 150HP

TEMP RISE, AMBIENT 40 DEGREE C, CONTINUOUS DUTY

WITH NON-REVERSE RACHET (CCW ROTATION, viewed from top)



HP	RPM	FRAME	MODEL NO.	460V F/L AMPS	NOM. EFF.	Down Thrust (lb)	BD (in)	CD (in)	WEIGHT LBS.	LIST PRICE (without coupling)
5	3600	213TP	HH0052UPA	6.0	89.5	1800	10.00	20.25	310	\$1,938
	1800	213TP	HH0054UPA	6.5	89.5	2300	10.00	20.25	310	\$1,938
	1200	215TP	HH0056UPA	7.0	89.5	2600	10.00	20.25	310	\$2,344
7.5	3600	213TP	HH7Y52UPA	9.0	89.5	1800	10.00	20.25	310	\$2,435
	1800	213TP	HH7Y54UPA	9.0	91.7	2250	10.00	20.25	310	\$2,382
	1200	254TP	HH7Y56UPA	10.0	91.0	3750	10.00	23.35	480	\$3,125
10	3600	215TP	HH0102UPA	12.5	90.2	1750	10.00	20.25	310	\$2,670
	1800	215TP	HH0104UPA	12.5	91.7	2250	10.00	20.25	310	\$2,650
	1200	256TP	HH0106UPA	13.5	91.0	3700	10.00	23.35	480	\$3,672
15	3600	254TP	HH0152UPA	19.5	91.0	2550	10.00	23.35	480	\$3,281
	1800	254TP	HH0154UPA	19.0	92.4	3200	10.00	23.35	480	\$3,359
	1200	284TP	HH0156UPA	19.0	91.7	3600	12.00	24.75	630	\$4,922
20	3600	256TP	HH0202UPA	24.5	91.0	2500	10.00	23.35	480	\$3,984
	1800	256TP	HH0204UPA	25.0	93.0	3150	10.00	23.35	480	\$3,984
	1200	286TP	HH0206UPA	26.5	91.7	3550	12.00	24.75	630	\$6,211
25	3600	284TP	HH0252UPA	31.0	91.7	2500	12.00	24.75	630	\$5,078
	1800	284TP	HH0254UPA	30.0	93.6	3100	12.00	24.75	630	\$5,088
	1200	324TP	HH0256UPA	31.0	93.0	6450	16.50	28.23	1025	\$7,500
30	3600	286TP	HH0302UPA	34.5	91.7	2450	12.00	24.75	630	\$5,625
	1800	286TP	HH0304UPA	35.5	93.6	2050	12.00	24.75	630	\$5,624
	1200	326TP	HH0306UPA	37.0	93.0	6400	16.50	28.23	1025	\$8,722

Coupling is not included, for price of coupling kits, please see parts list price on page 38.

Only 1800 rpm with space heater.

For 575/3/60, change model number and amps; other items including price remain the same as 460/3/60.

MODEL NUMBERS ENDING IN "UPA" ARE USABLE ON 200 VOLT

Weights are estimates.

HARVEST SERIES VERTICAL HOLLOW SHAFT TEFC

PREMIUM EFFICIENCY, NEMA DESIGN B, FRAMES: 213TP - 449TP

1.15 SERVICE FACTOR CLASS F INSULATION, CLASS B, 3/60/460V FOR ABOVE 150HP

TEMP RISE, AMBIENT 40 DEGREE C, CONTINUOUS DUTY

WITH NON-REVERSE RACHET (CCW ROTATION, viewed from top)



HP	RPM	FRAME	MODEL NO.	460V F/L AMPS	NOM. EFF.	Down Thrust (lb)	BD (in)	CD (in)	WEIGHT LBS.	LIST PRICE (without coupling)
40	3600	324TP	HH0402UPA	41.0	92.4	4400	16.50	28.23	1025	\$8,008
	1800	324TP	HH0404UPA	48.0	94.1	4500	16.50	28.23	1025	\$7,712
	1200	364TP	HH0406UPA	48.0	94.1	9300	16.50	31.18	1480	\$11,412
50	3600	326TP	HH0502UPA	50.0	93.0	4350	16.50	28.23	1025	\$9,258
	1800	326TP	HH0504UPA	58.0	94.5	5500	16.50	31.18	1025	\$8,954
	1200	365TP	HH0506UPA	59.9	94.1	9250	16.50	31.18	1480	\$15,440
60	3600	364TP	HH0602UPA	69.0	93.6	6400	16.50	31.18	1480	\$11,953
	1800	364TP	HH0604UPA	69.2	95.0	8050	16.50	31.18	1480	\$11,345
	1200	404TP	HH0606UPA	74.2	94.5	8250	16.50	36.93	1870	\$16,493
75	3600	365TP	HH0752UPA	84.3	93.6	6350	16.50	31.18	1480	\$13,516
	1800	365TP	HH0754UPA	86.6	95.4	8000	16.50	31.18	1480	\$12,442
	1200	405TP	HH0756UPA	89.5	94.5	8200	16.50	36.93	1870	\$19,388
100	1800	405TP	HH1004UPA	115	95.4	9200	16.50	36.93	1870	\$18,179
	1200	444TP	HH1006UPA	122	95.0	11050	16.50	*40.31	2070	\$25,211
125	1800	444TP	HH1254UPA	141	95.4	9150	16.50	*40.31	2070	\$21,336
	1200	445TP	HH1256UPA	148	95.0	10550	16.50	*40.31	2070	\$32,857
150	1800	445TP	HH1504UPA	169	95.8	9550	16.50	*40.31	2070	\$24,692
	1200	447TP	HH1506UPA	177	95.8	14500	16.50	44.78	2880	\$38,882
200	1800	447TP	HH2004UPB	219	96.2	11500	16.50	44.78	2880	\$34,311
	1200	449TP	HH2006UPB	233	95.8	14000	20.00	49.78	3200	\$52,734
250	1800	449TP	HH2504UPB	227	96.2	11200	20.00	49.78	3200	\$35,752
	1200	449TP	HH2506UPB	239	95.8	13500	20.00	49.78	3200	\$58,594
300	1800	449TP	HH3004UPB	331	96.2	10900	20.00	49.78	3200	\$37,812

Coupling is not included, for price of coupling kits, please see parts list price on page 38.

Only 1800 rpm with space heater. Weights are estimates.

For 575/3/60, change model number and amps; other items including price remain the same as 460/3/60.

MODEL NUMBERS ENDING IN "UPA" ARE USABLE ON 200 VOLT

* 44.78 in. is also available, see coupling page.

HARVEST SERIES VERTICAL HOLLOW SHAFT WPI

NEMA PREMIUM EFFICIENCY, NEMA DESIGN B, FRAMES: 213TP - 447TP

1.15 SERVICE FACTOR CLASS F INSULATION, CLASS B, 3/60/460V FOR ABOVE 125HP

TEMP RISE, AMBIENT 40 DEGREE C, CONTINUOUS DUTY

WITH NON-REVERSE RACHET (CCW ROTATION, viewed from top)



HP	RPM	FRAME	MODEL NO.	460V F/L AMPS	NOM. EFF.	Down Thrust (lb)	BD (in)	CD (in)	WEIGHT LBS.	LIST PRICE (without coupling)
5	1800	213TP10	HH0054VPIP10	6.5	89.5	2400	10.00	20.06	150	\$1,325
7.5	1800	213TP10	HH7Y54VPIP10	9.6	91.0	2300	10.00	20.06	150	\$1,969
10	1800	215TP10	HH0104VPIP10	12.8	91.7	2300	10.00	20.06	150	\$2,150
15	1800	254TP10	HH0154VPIP10	18.8	93.0	3300	10.00	23.38	342	\$2,913
20	1800	256TP12	HH0204VPIP12	24.9	93.0	3200	12.00	23.38	342	\$3,469
25	1800	284TP12	HH0254VPIP12	30.9	93.6	3200	12.00	24.75	507	\$4,275
30	1800	286TP12	HH0304VPIP12	36.4	94.1	3200	12.00	24.75	507	\$4,672
40	1800	324TP16	HH0404VPIP16	48.5	94.1	5700	16.50	28.23	760	\$6,716
50	1800	326TP16	HH0504VPIP16	60.4	94.5	5700	16.50	28.23	760	\$7,556
60	1800	364TP16	HH0604VPIP16	74.9	95.0	5600	16.50	31.16	1102	\$9,253
75	1800	365TP16	HH0754VPIP16	93.6	95.0	5500	16.50	31.16	1102	\$10,238
100	1800	404TP16	HH1004VPIP16	115	95.4	7300	16.50	36.94	1588	\$15,147
125	1800	405TP16	HH1254VPBP16	143	95.4	7100	16.50	36.94	1588	\$17,628
150	1800	444TP16	HH1504VPBP16	170	95.8	11800	16.50	44.80	2073	\$19,300
200	1800	445TP20	HH2004VPBP20	227	95.8	11600	20.00	44.83	2073	\$24,438
250	1800	447TP20	HH2504VPBP20	281	95.8	11300	20.00	44.83	2073	\$26,534
300	1800	447TP20	HH3004VPBP20	337	95.8	13800	20.00	49.78	3200	\$28,063

Coupling is not included, for price of coupling kits, please see parts list price on page ??

Only 1800 rpm with space heater.

For 575/3/60, change model number and amps; other items including price remain the same as 460/3/60.

Weights are estimates.

HARVEST SERIES VERTICAL SOLID SHAFT TEFC

PREMIUM EFFICIENCY, NEMA DESIGN B, FRAMES: 213VP - 449VP

1.15 SERVICE FACTOR CLASS F INSULATION, CLASS B, 3/60/460V FOR ABOVE 150HP

TEMP RISE, AMBIENT 40 DEGREE C, CONTINUOUS DUTY

WITH NON-REVERSE RACHET (CCW ROTATION, viewed from top)



HP	RPM	FRAME	MODEL NO.	460V F/L AMPS	NOM. EFF.	Down Thrust (lb)	BD (in)	WEIGHT LBS.	LIST PRICE
5	3600	213VP	HH0052ZPA	6.0	89.5	1800	10.00	310	\$1,910
	1800	213VP	HH0054ZPA	6.5	89.5	2300	10.00	310	\$1,910
	1200	215VP	HH0056ZPA	7.0	89.5	2600	10.00	310	\$2,311
7.5	3600	213VP	HH7Y52ZPA	9.0	89.5	1800	10.00	310	\$2,401
	1800	213VP	HH7Y54ZPA	9.0	91.7	2250	10.00	310	\$2,348
	1200	254VP	HH7Y56ZPA	10.0	91.0	3750	10.00	480	\$3,080
10	3600	215VP	HH0102ZPA	12.5	90.2	1750	10.00	310	\$2,632
	1800	215VP	HH0104ZPA	12.5	91.7	2250	10.00	310	\$2,613
	1200	256VP	HH0106ZPA	13.5	91.0	3700	10.00	480	\$3,620
15	3600	254VP	HH0152ZPA	19.5	91.0	2550	10.00	480	\$3,234
	1800	254VP	HH0154ZPA	19.0	92.4	3200	10.00	480	\$3,311
	1200	284VP	HH0156ZPA	19.0	91.7	3600	12.00	630	\$4,852
20	3600	256VP	HH0202ZPA	24.5	91.0	2500	10.00	480	\$3,927
	1800	256VP	HH0204ZPA	25.0	93.0	3150	10.00	480	\$3,927
	1200	286VP	HH0206ZPA	26.5	91.7	3550	12.00	630	\$6,123
25	3600	284VP	HH0252ZPA	31.0	91.7	2500	12.00	630	\$5,006
	1800	284VP	HH0254ZPA	30.0	93.6	3100	12.00	630	\$5,016
	1200	324VP	HH0256ZPA	31.0	93.0	6450	16.50	1025	\$7,394
30	3600	286VP	HH0302ZPA	34.5	91.7	2450	12.00	630	\$5,545
	1800	286VP	HH0304ZPA	35.5	93.6	3250	12.00	630	\$5,544
	1200	326VP	HH0306ZPA	37.0	93.0	6400	16.50	1025	\$8,598

MOTORS CAN BE CUSTOM BUILT TO ORDER

Only 1800 rpm with space heater.

For 575/3/60, change model number and amps; other items including price remain the same as 460/3/60.

MODEL NUMBERS ENDING IN "ZPA" ARE USABLE ON 200 VOLT

Weights are estimates.

HARVEST SERIES VERTICAL SOLID SHAFT TEFC

PREMIUM EFFICIENCY, NEMA DESIGN B, FRAMES: 213VP - 449VP

1.15 SERVICE FACTOR CLASS F INSULATION, CLASS B, 3/60/460V FOR ABOVE 150HP

TEMP RISE, AMBIENT 40 DEGREE C, CONTINUOUS DUTY

WITH NON-REVERSE RACHET (CCW ROTATION, viewed from top)



HP	RPM	FRAME	MODEL NO.	460V F/L AMPS	NOM. EFF.	Down Thrust (lb)	BD (in)	WEIGHT LBS.	LIST PRICE
40	3600	324VP	HH0402ZPA	41.0	92.4	4400	16.50	1025	\$7,894
	1800	324VP	HH0404ZPA	48.0	94.1	4500	16.50	1025	\$7,602
	1200	364VP	HH0406ZPA	48.0	94.1	9300	16.50	1480	\$11,250
50	3600	326VP	HH0502ZPA	50.0	93.0	4350	16.50	1025	\$9,127
	1800	326VP	HH0504ZPA	58.0	94.5	5500	16.50	1025	\$8,827
	1200	365VP	HH0506ZPA	59.9	94.1	9250	16.50	1480	\$15,221
60	3600	364VP	HH0602ZPA	69.0	93.6	6400	16.50	1480	\$11,783
	1800	364VP	HH0604ZPA	69.2	95.0	8050	16.50	1480	\$11,184
	1200	404VP	HH0606ZPA	74.2	94.5	8250	16.50	1870	\$16,258
75	3600	365VP	HH0752ZPA	84.3	93.6	6350	16.50	1480	\$13,324
	1800	365VP	HH0754ZPA	86.6	95.4	8000	16.50	1480	\$12,265
	1200	405VP	HH0756ZPA	89.5	94.5	8200	16.50	1870	\$19,113
100	1800	405VP	HH1004ZPA	115	95.4	9200	16.50	1870	\$17,920
	1200	444VP	HH1006ZPA	122	95.0	11050	16.50	2070	\$24,853
125	1800	444VP	HH1254ZPA	141	95.4	9150	16.50	2070	\$21,033
	1200	445VP	HH1256ZPA	148	95.0	10550	16.50	2070	\$32,390
150	1800	445VP	HH1504ZPA	169	95.8	9550	16.50	2070	\$24,342
	1200	447VP	HH1506ZPA	177	95.8	14500	16.50	2880	\$38,330
200	1800	447VP	HH2004ZPB	219	96.2	11500	16.50	2880	\$33,824
	1200	449VP	HH2006ZPB	233	95.8	14000	20.00	3200	\$51,986
250	1800	449VP	HH2504ZPB	278	96.2	11200	20.00	3200	\$35,244
	1200	449VP	HH2506ZPB	292	95.8	13500	20.00	3200	\$57,762
300	1800	449VP	HH3004ZPB	331	96.2	10900	20.00	3200	\$37,275

Only 1800 rpm with space heater.

For 575/3/60, change model number and amps; other items including price remain the same as 460/3/60.

MODEL NUMBERS ENDING IN "ZPA" ARE USABLE ON 200 VOLT

Weights are estimates.

KITS INCLUDE MOUNTING HARDWARE FOR EASY INSTALLATION

C-FACE (TEFC)		
FRAME	MODEL NO.	LIST PRICE
140T	TK1400CFS	\$108
180T	TK1800CFS	\$126
210T	TK2100CFS	\$157
250T	TK2500CFS	\$276
280T	TK2800CFS	\$414
320T	TK3200CFS	\$605
360T 2P	TK3620CFS	\$720
360T 4P/6P/8P	TK3646CFSN	\$720
360T 4P/6P/8P	TK3646CFS	\$720
400T 2P	TK4020CFS	\$1,158
400T 4P/6P/8P	TK4046CFSN	\$1,158
400T 4P/6P/8P	TK4046CFS	\$1,158
440T 2P	TK4420CFS	\$1,158
440T 4P/6P/8P	TK4446CFSN	\$1,504
440T 4P/6P/8P	TK4446CFS	\$1,158
449T 2P	TK4920CFS	\$1,158
449T 4P/6P/8P	TK4946CFS	\$1,504

N = 6300 series bearing

D-FLANGE (TEFC)		
FRAME	MODEL NO.	LIST PRICE
140T	TK1400DFS	\$108
180T	TK1800DFS	\$126
210T	TK2100DFS	\$267
250T	TK2500DFS	\$288
280T	TK2800DFS	\$488
320T	TK3200DFS	\$742
360T 2P	TK3620DFS	\$859
360T 4P/6P	TK3646DFS	\$918
360T 4P/6P	TK3646DFS	\$780
400T 2P	TK4020DFS	\$1,200
400T 4P/6P	TK4046DFS	\$1,200
400T 4P/6P	TK4046DFS	\$1,200
440T 2P	TK4420DFS	\$1,320
440T 4P/6P	TK4446DFS	\$1,320
440T 4P/6P	TK4446DFS	\$1,320
449T 4P/6P	TK4946DFS	\$1,320

N = 6300 series bearing

C-FACE (TEFC) -- New Series		
FRAME	MODEL NO.	LIST PRICE
360T	TK3600CFSNN	\$720
400T	TK4000CFSNN	\$1,158
444/5T & 447/9T 2P	TK4420CFSNN	\$1,158
444/5T 4/6/8 P	TK4446CFSNN	\$1,504
447/9T 4/6/8 P	TK4946CFSNN	\$1,504

NN = New S Series

D-FLANGE (TEFC) -- New Series		
FRAME	MODEL NO.	LIST PRICE
360T	TK3600DFSNN	\$918
400T	TK4000DFSNN	\$1,200
444/5T & 447/9T 2P	TK4420DFSNN	\$1,320
447/9T 4/6 P	TK4946DFSNN	\$1,320

NN = New S Series

BALL TO ROLLER BEARING KITS		
MODEL NO.	FRAME	LIST PRICE
TK360-SPACER	*364T/365T	\$20
TK400-SPACER	*404T/405T	\$25
TK440-SPACER	*444T~447T	\$30
TK449-SPACER	*449T	\$35
TKN5009-SPACER	*N5007/9	\$40
TKN5808-SPACER	*N5808	\$50

* Requires 2 per motor

BALL TO ROLLER BEARING KITS for New Series		
MODEL NO.	FRAME	LIST PRICE
TKN360-SPACER	*364T/365T	\$20
TKN400-SPACER	*404T/405T	\$25
TKN440-SPACER	*444T - 449T	\$35

* Requires 2 per motor

KITS INCLUDE MOUNTING HARDWARE FOR EASY INSTALLATION

C-FACE (ODP)		
FRAME	MODEL NO.	LIST PRICE
140T	TK1400CFD	\$63
180T	TK1800CFD	\$94
210T	TK2100CFD	\$137
250T 2P	TK2502CFD	\$230
250T 4P	TK2504CFD	\$230
250T 6P	TK2506CFD	\$230
284TS	TK2842CFD	\$324
284T 4P/6P	TK2800CFD	\$324
286TS	TK2862CFD	\$324
286T 4P	TK2864CFD	\$324
286T 6P	TK2800CFD	\$324
320TS	TK3202CFD	\$398
320T 4P	TK3204CFD	\$398
324T 6P	TK3246CFD	\$398
326T 6P	TK3266CFD	\$398
364TS	TK3642CFD	\$590
360T 4P	TK3604CFD	\$590
364T 6P	TK3646CFD	\$590
365TS	TK3652CFD	\$590
365T 6P	TK3656CFD	\$590
400TS	TK4002CFD	\$879
400T 4P	TK4004CFD	\$879
404T 6P	TK4046CFD	\$879
405T 6P	TK4056CFD	\$879
440TS	TK4402CFD	\$1,250
444T 4P	TK4404CFD	\$1,250
444T 6P	TK4446CFD	\$1,250
445T 4P	TK4454CFD	\$1,250
445T 6P	TK4456CFD	\$1,250
447T 4P	TK4404CFD	\$1,250
447T 6P	TK4406CFD	\$1,250

I-EEE 841 C-FACE KIT INCLUDING INPRO SEAL / BEARING CAP / HARDWARE		
FRAME	MODEL NO.	LIST PRICE
140T	TK1400CFJN	\$278
180T	TK1800CFJN	\$361
210T	TK2100CFJN	\$442
250T	TK2500CFJN	\$773
280T	TK2800CFJN	\$1,376
320T	TK3200CFJN	\$1,564
360T	TK3600CFJNN	\$1,785
360T 2P	TK3620CFJN	\$1,785
360T 4P/6P	TK3646CFJN	\$2,045
400T	TK4000CFJNN	\$2,424
400T 2P	TK4020CFJN	\$2,424
400T 4P/6P	TK4046CFJN	\$2,451
440T/449T 2P	TK4420CFJN	\$3,078
440TS - 449TS 2P	TK4020CFJNN	\$3,078
440T 4P/6P	TK4446CFJN	\$3,170
444/5T 4/6P	TK4446CFJNN	\$3,170
447/9T 4/6P	TK4946CFJNN	\$3,170
449T 4P/6P	TK4946CFJN	\$3,170

NN = New S series

KITS INCLUDE MOUNTING HARDWARE FOR EASY INSTALLATION

STEEL FAN COVER (WJ/WH MODELS)			
FRAME	POLE	MODEL NO.	LIST PRICE
56	2/4/6	4FCV56	\$49
140T	2/4/6	4FCV140W	\$49
180T	2/4/6	4FCV180W	\$64
210T	2/4/6	4FCV210W	\$104
250T	2/4/6	4FCV250W	\$120
280T	2/4/6	4FCV280W	\$201
320T	2/4/6	4FCV320W	\$262
360T	2/4/6	4FCV360W	\$363
400T	2	4FCV4002W	\$404
	4	4FCV4004W	
	6	4FCV4002W	
440T	2	4FCV4404W	\$520
	4	4FCV4404W	
	6	4FCV4404W	
5009N	2/4/6	4FCV5009N	\$581

IP54 STEEL T-BOX (WH MODELS)			
FRAME	POLE	MODEL NO.	LIST PRICE
140T	2/4/6	TB140IP54	\$67
180T	2/4/6	TB140IP54	\$67
210T	2/4/6	TB210IP54	\$79
250T	2/4/6	TB250IP54	\$137
280T	2/4/6	TB2832IP54	\$157
320T	2/4/6	TB2832IP54	
360T	2/4/6	TB360IP54	\$195
400T	2/4/6	TB4044IP54	\$293
440T	2/4/6		
447T	2/4/6		
449T	2/4/6		

STEEL DRIP COVER KITS (WJ/WH MODELS)			
FRAME	POLE	MODEL NO.	LIST PRICE
140T	2/4/6	DRPCVR140T	\$56
180T	2/4/6	DRPCVR180T	\$72
210T	2/4/6	DRPCVR210T	\$94
250T	2/4/6	DRPCVR250T	\$128
280T	2/4/6	DRPCVR280T	\$216
320T	2/4/6	CRPCVR320T	\$235

KITS INCLUDE MOUNTING HARDWARE FOR EASY INSTALLATION

PLASTIC FANS			
WJ / WH MODELS			
FRAME	POLE	MODEL NO.	LIST PRICE
140T / 56	2/4/6	2A4331579001	\$41
180T	2	2A4331579001	\$41
	4/6	2A4332179691	\$46
210T	2/4/6	2A4332179691	\$46
250T	2	2A4331195101	\$57
	4 (WJ)	2A4331229301	\$64
	4 (WH)	2A4331229201	\$64
	6 (WJ)	2A4331229201	\$64
	6 (WH)	2A4332206001	\$57
280T	2/4	2A4331229201	\$64
	6	2A4331195101	\$57
320T	2	2A4331229201	\$64
	4	2A4331990102	\$94
	6	2A4331229201	\$64
360T	2	2A4331229201	\$64
	4/6 (WJ)	2A4331990102	\$124
	4/6 (WH)	2A4331229201	\$64
400T	2	2A4331990102	\$94
	4	2A4331990202	\$94
	6 (WJ)	2A4331990202	\$94
	6 (WH)	2A4331990102	\$94
440T	2	2A4333657201	\$64
	4/6	2A4331990202	\$94
447T	2	2A4331257201	\$94
	4/6	2A4331990202	\$94
449T	2	2A4331257201	\$94
449T	4 (250HP)	2A4331257201	\$94
	4 (300HP)	2A4332323701	\$94
	6 (250HP)	2A4332323701	\$94
	6 (200HP)	2A4331990202	\$94

CAST IRON FANS			
WJ / WH MODELS			
FRAME	POLE	MODEL NO.	LIST PRICE
140T / 56	2/4/6	4FC140W	\$30
180T	2	4FC140W	\$30
	4/6	4FC1804W	\$52
210T	2/4/6	4FC210W	\$59
250T	2	4FC2502W	\$65
	4	4FC2504(WJ)	\$70
	4	4FC2504(WH)	\$75
	6 (WJ)	4FC2504(WH)	\$75
	6 (WH)	4FC2506(WH)	\$75
280T	2/4	4FC2504(WH)	\$75
	6	4FC2502W	\$65
320T	2/6	4FC2504(WH)	\$75
	4	4FC3204W	\$125
360T	2	4FC2504(WH)	\$75
	4/6	4FC3204W	\$125
400T	2/6	4FC3204W	\$125
400T	4	4FC4004W	\$125
440T	2	4FC2504(WJ)	\$70
440T	4/6	4FC4004W	\$125
447T	2	4FC4472W	\$108
447T	4/6	4FC4004W	\$125
449T	2	4FC4472W	\$108
449T	4 (250HP)	4FC4472W	\$108
449T	4 (300HP)	4FC4494W	\$167

KITS INCLUDE MOUNTING HARDWARE FOR EASY INSTALLATION

CAST IRON T-BOX KITS FOR SUPER MAX TEFC & 841			
FRAME	POLE	MODEL NO.	LIST PRICE
140T	2/4/6	TK1400CITB	\$42
180T	2/4/6	TK1400CITB	\$42
210T	2/4/6	TK2100CITB	\$71
250T	2/4/6	TK2500CITB	\$120
280T	2/4/6	TK2800CITB	\$162
320T	2/4/6	TK3200CITB	\$233
360T	2/4/6	TK3600CITB	
400T	2/4/6	TK4000CITB	\$420
440T	2/4/6	TK4400CITB	
447T / 449T	2/4/6	TK4700CITB	

CAST IRON FAN COVER KITS FOR SUPER MAX TEFC			
FRAME	POLE	MODEL NO.	LIST PRICE
56	2/4/6	TK5600CIFC	\$48
140T	2/4/6	TK1400CIFC	\$66
180T	2/4/6	TK1800CIFC	\$108
210T	2/4/6	TK2100CIFC	\$167
250T	2/4/6	TK2500CIFC	\$223
280T	2/4/6	TK2800CIFC	\$318
320T	2/4/6	TK3200CIFC	\$451
360T	2/4/6	TK3600CIFC	\$540
400T	2	TK4020CIFC	\$690
	4/6	TK4046CIFC	\$690
440T	2/4/6	TK4400CIFC	\$990
447T	2/4/6	TK4400CIFC	\$990
449T	2	TK4420CIFC	\$990
449T	4/6	TK4946CIFC	\$990

KITS INCLUDE MOUNTING HARDWARE FOR EASY INSTALLATION

Steel Fan Cover for Super Max TEFC New S Series				
HP	P	Frame	MODEL NO.	LIST PRICE
30 HP	8	364/5T	SFC433-57194-01	\$363
40 HP	6	364/5T	SFC433-57194-01	\$363
40 HP	8	364/5T	SFC433-57194-01	\$363
50 HP	6	364/5T	SFC433-57194-01	\$363
50 HP	8	404/5T	SFC433-57306-01	\$520
60 HP	2	364/5TS	SFC433-57194-01	\$363
60 HP	4	364/5T	SFC433-57194-01	\$363
60 HP	6	404/5T	SFC433-57306-01	\$520
60 HP	8	404/5T	SFC433-57306-01	\$520
75 HP	2	364/5TS	SFC433-57194-01	\$363
75 HP	4	364/5T	SFC433-57194-01	\$363
75 HP	6	404/5T	SFC433-57306-01	\$520
75 HP	8	444/5T	SFC433-57306-01	\$520
100 HP	2	404/5TS	SFC433-57306-01	\$520
100 HP	4	404/5T	SFC433-57306-01	\$520
100 HP	6	444/5T	SFC433-57306-01	\$520
100 HP	8	444/5T	SFC433-57306-01	\$520
125 HP	2	444/5TS	SFC433-57306-01	\$520
125 HP	4	444/5T	SFC433-57306-01	\$520
125 HP	6	444/5T	SFC433-57306-01	\$520
125 HP	8	447/9T	SFC434-76814-01	\$520
150 HP	2	444/5TS	SFC433-57306-01	\$520
150 HP	4	444/5T	SFC433-57306-01	\$520
150 HP	6	447/9T	SFC433-57306-01	\$520
150 HP	8	447/9T	SFC434-76814-01	\$520
200 HP	2	447/9TS	SFC433-57360-01	\$520
200 HP	4	447/9T	SFC433-57306-01	\$520
200 HP	6	447/9T	SFC433-57306-01	\$520
250 HP	2	447/9TS	SFC433-57360-01	\$520
250 HP	4	447/9T	SFC433-57306-01	\$520
250 HP	6	447/9T	SFC434-76814-01	\$520
300 HP	2	S447/9TS	SFC433-75489-03	\$520
300 HP	4	447/9T	SFC434-76814-01	\$520
300 HP	6	S447/9T	SFC433-75489-01	\$520
350 HP	2	S447/9TS	SFC433-75489-03	\$520
350 HP	4	S447/9T	SFC433-75489-01	\$520
400 HP	2	S447/9TS	SFC433-75489-03	\$520
400 HP	4	S447/9T	SFC433-75489-01	\$520

KITS INCLUDE MOUNTING HARDWARE FOR EASY INSTALLATION

Cast Iron Fan Cover for Super Max 841				
HP	P	Frame	MODEL NO.	LIST PRICE
1 HP	4	143T	CFC433-29363-03	\$66
1 HP	6	145T	CFC433-29363-03	\$66
1.5 HP	4	145T	CFC433-29363-03	\$66
1.5 HP	6	182T	CFCD33-13493-02	\$108
2 HP	2	145T	CFC433-29363-03	\$66
2 HP	4	145T	CFC433-29363-03	\$66
2 HP	6	184T	CFCD33-13493-02	\$108
3 HP	2	182T	CFCD33-13492-02	\$108
3 HP	4	182T	CFCD33-13493-02	\$108
3 HP	6	213T	CFC433-28339-03	\$167
3 HP	8	215T	CFC433-28339-03	\$167
5 HP	2	184T	CFCD33-13493-02	\$108
5 HP	4	184T	CFCD33-13493-02	\$108
5 HP	6	215T	CFC433-28339-03	\$167
5 HP	8	254T	CFC433-24600-03	\$223
7.5 HP	4	213T	CFC433-28339-03	\$167
7.5 HP	6	254T	CFC433-24600-03	\$223
7.5 HP	8	256T	CFC433-24600-03	\$223
10 HP	2	215T	CFC433-28339-03	\$167
10 HP	4	215T	CFC433-28339-03	\$167
10 HP	6	256T	CFC433-24600-03	\$223
10 HP	8	284T	CFC433-22491-04	\$318
15 HP	2	254T	CFC433-24600-03	\$223
15 HP	4	254T	CFC433-24600-03	\$223
15 HP	6	284T	CFC433-22491-04	\$318
15 HP	8	286T	CFC433-22491-04	\$318
20 HP	2	256T	CFC433-24600-03	\$223
20 HP	4	256T	CFC433-24600-03	\$223
20 HP	6	286T	CFC433-22491-04	\$318
20 HP	8	324T	CFCD34-04064-01	\$451
25 HP	4	284T	CFC433-22491-04	\$318
25 HP	6	324T	CFCD34-04064-01	\$451
25 HP	8	326T	CFCD34-04064-01	\$451
30 HP	4	286T	CFC433-22491-04	\$318
30 HP	6	326T	CFCD34-04064-01	\$451
40 HP	2	324T	CFCD34-04064-01	\$451
40 HP	4	324T	CFCD34-04064-01	\$451
50 HP	4	326T	CFCD34-04064-01	\$451

Cast Iron Fan Cover for Super Max 841 New S Series				
HP	P	Frame	MODEL NO.	LIST PRICE
30 HP	8	364/5T	CFC434-78289-01	\$540
40 HP	6	364/5T	CFC434-78289-01	\$540
40 HP	8	364/5T	CFC434-78289-01	\$540
50 HP	6	364/5T	CFC434-78289-01	\$540
50 HP	8	404/5T	CFC434-78289-02	\$690
60 HP	2	364/5TS	CFC434-78289-01	\$540
60 HP	4	364/5T	CFC434-78289-01	\$540
60 HP	6	404/5T	CFC434-78289-02	\$690
60 HP	8	404/5T	CFC434-78289-02	\$690
75 HP	2	364/5TS	CFC434-78289-01	\$540
75 HP	4	364/5T	CFC434-78289-01	\$540
75 HP	6	404/5T	CFC434-78289-02	\$690
75 HP	8	444/5T	CFC434-78289-04	\$990
100 HP	2	404/5TS	CFC434-78289-02	\$690
100 HP	4	404/5T	CFC434-78289-02	\$690
100 HP	6	444/5T	CFC434-78289-04	\$990
100 HP	8	444/5T	CFC434-78289-04	\$990
125 HP	2	444/5TS	CFC434-78289-04	\$990
125 HP	4	444/5T	CFC434-78289-04	\$990
125 HP	6	444/5T	CFC434-78289-04	\$990
125 HP	8	447/9T	CFC434-78289-04	\$990
150 HP	2	444/5TS	CFC434-78289-04	\$990
150 HP	4	444/5T	CFC434-78289-04	\$990
150 HP	6	447/9T	CFC434-78289-04	\$990
150 HP	8	447/9T	CFC434-78289-04	\$990
200 HP	2	447/9TS	CFC434-78289-04	\$990
200 HP	4	447/9T	CFC434-78289-04	\$990
200 HP	6	447/9T	CFC434-78289-04	\$990
250 HP	2	447/9TS	CFC434-78289-04	\$990
250 HP	4	447/9T	CFC434-78289-04	\$990
250 HP	6	447/9T	CFC434-78289-04	\$990
300 HP	4	447/9T	CFC434-78289-04	\$990

KITS INCLUDE MOUNTING HARDWARE FOR EASY INSTALLATION

Steel T-Box for Super Max TEFC New S Series				
HP	P	Frame	MODEL NO.	LIST PRICE
30 HP	8	364/5T	STB434-76874-92	\$195
40 HP	6	364/5T	STB434-76874-92	\$195
40 HP	8	364/5T	STB434-76874-92	\$195
50 HP	6	364/5T	STB434-76874-92	\$195
50 HP	8	404/5T	STB434-78446-94	\$293
60 HP	2	364/5TS	STB434-76874-92	\$195
60 HP	4	364/5T	STB434-76874-92	\$195
60 HP	6	404/5T	STB434-78446-94	\$293
60 HP	8	404/5T	STB434-78446-94	\$293
75 HP	2	364/5TS	STB434-76874-92	\$195
75 HP	4	364/5T	STB434-76874-92	\$195
75 HP	6	404/5T	STB434-78446-94	\$293
75 HP	8	444/5T	STB434-78446-94	\$293
100 HP	2	404/5TS	STB434-78446-94	\$293
100 HP	4	404/5T	STB434-78446-94	\$293
100 HP	6	444/5T	STB434-78446-94	\$293
100 HP	8	444/5T	STB434-78446-94	\$293
125 HP	2	444/5TS	STB434-78446-94	\$293
125 HP	4	444/5T	STB434-78446-94	\$293
125 HP	6	444/5T	STB434-78446-94	\$293
125 HP	8	447/9T	STB434-78446-94	\$293
150 HP	2	444/5TS	STB434-78446-94	\$293
150 HP	4	444/5T	STB434-78446-94	\$293
150 HP	6	447/9T	STB434-78446-94	\$293
150 HP	8	447/9T	STB434-78446-94	\$293
200 HP	2	447/9TS	STB434-78446-94	\$293
200 HP	4	447/9T	STB434-78446-94	\$293
200 HP	6	447/9T	STB434-78446-94	\$293
250 HP	2	447/9TS	STB434-78446-94	\$293
250 HP	4	447/9T	STB434-78446-94	\$293
250 HP	6	447/9T	STB434-78446-94	\$293
300 HP	2	S447/9TS	STB434-78446-94	\$293
300 HP	4	447/9T	STB434-78446-94	\$293
300 HP	6	S447/9T	STB434-78446-94	\$293
350 HP	2	S447/9TS	STB434-78446-94	\$293
350 HP	4	S447/9T	STB434-78446-94	\$293
400 HP	2	S447/9TS	STB434-78446-94	\$293
400 HP	4	S447/9T	STB434-78446-94	\$293



KITS INCLUDE MOUNTING HARDWARE FOR EASY INSTALLATION

Cast Iron T-Box for Super Max 841 New S Series				
HP	P	Frame	MODEL NO.	LIST PRICE
30 HP	8	364/5T	CTB434-78446-95	\$233
40 HP	6	364/5T	CTB434-78446-95	\$233
40 HP	8	364/5T	CTB434-78446-95	\$233
50 HP	6	364/5T	CTB434-78446-95	\$233
50 HP	8	404/5T	CTB434-78446-96	\$420
60 HP	2	364/5TS	CTB434-78446-95	\$233
60 HP	4	364/5T	CTB434-78446-95	\$233
60 HP	6	404/5T	CTB434-78446-96	\$420
60 HP	8	404/5T	CTB434-78446-96	\$420
75 HP	2	364/5TS	CTB434-78446-95	\$233
75 HP	4	364/5T	CTB434-78446-95	\$233
75 HP	6	404/5T	CTB434-78446-96	\$420
75 HP	8	444/5T	CTB434-78446-97	\$420
100 HP	2	404/5TS	CTB434-78446-96	\$420
100 HP	4	404/5T	CTB434-78446-96	\$420
100 HP	6	444/5T	CTB434-78446-97	\$420
100 HP	8	444/5T	CTB434-78446-97	\$420
125 HP	2	444/5TS	CTB434-78446-97	\$420
125 HP	4	444/5T	CTB434-78446-97	\$420
125 HP	6	444/5T	CTB434-78446-97	\$420
125 HP	8	447/9T	CTB434-78446-98	\$420
150 HP	2	444/5TS	CTB434-78446-97	\$420
150 HP	4	444/5T	CTB434-78446-97	\$420
150 HP	6	447/9T	CTB434-78446-98	\$420
150 HP	8	447/9T	CTB434-78446-98	\$420
200 HP	2	447/9TS	CTB434-78446-98	\$420
200 HP	4	447/9T	CTB434-78446-98	\$420
200 HP	6	447/9T	CTB434-78446-98	\$420
250 HP	2	447/9TS	CTB434-78446-98	\$420
250 HP	4	447/9T	CTB434-78446-98	\$420
250 HP	6	447/9T	CTB434-78446-98	\$420
300 HP	2	S447/9TS	CTB434-78446-99	\$420
300 HP	4	447/9T	CTB434-78446-98	\$420
300 HP	6	S447/9T	CTB434-78446-99	\$420
350 HP	2	S447/9TS	CTB434-78446-99	\$420
350 HP	4	S447/9T	CTB434-78446-99	\$420
400 HP	2	S447/9TS	CTB434-78446-99	\$420
400 HP	4	S447/9T	CTB434-78446-99	\$420



KITS INCLUDE MOUNTING HARDWARE FOR EASY INSTALLATION

Plastic Fan for Super Max TEFC & 841 New S Series				
HP	P	Frame	MODEL NO.	LIST PRICE
30 HP	8	364/5T	PF-D34-14834-14	\$64
40 HP	6	364/5T	PF-D34-14834-14	\$64
40 HP	8	364/5T	PF-D34-14834-14	\$64
50 HP	6	364/5T	PF-D34-14834-14	\$64
50 HP	8	404/5T	PF-D34-14834-15	\$94
60 HP	2	364/5TS	PF-D33-14465-09	\$64
60 HP	4	364/5T	PF-D34-14834-11	\$64
60 HP	6	404/5T	PF-D34-14834-15	\$94
60 HP	8	404/5T	PF-D34-14834-15	\$94
75 HP	2	364/5TS	PF-D33-14465-08	\$64
75 HP	4	364/5T	PF-D34-14834-13	\$64
75 HP	6	404/5T	PF-D34-14834-15	\$94
75 HP	8	444/5T	PF-433-56098-01	\$94
100 HP	2	404/5TS	PF-D33-14465-11	\$94
100 HP	4	404/5T	PF-D33-14465-12	\$94
100 HP	6	444/5T	PF-433-56098-01	\$94
100 HP	8	444/5T	PF-433-56098-01	\$94
125 HP	2	444/5TS	PF-D34-14834-13	\$64
125 HP	4	444/5T	PF-433-56098-01	\$94
125 HP	6	444/5T	PF-433-56098-01	\$94
125 HP	8	447/9T	PF-D33-14465-25	\$94
150 HP	2	444/5TS	PF-433-56099-01	\$64
150 HP	4	444/5T	PF-433-56098-01	\$94
150 HP	6	447/9T	PF-D34-14834-20	\$94
150 HP	8	447/9T	PF-D33-14465-25	\$94
200 HP	2	447/9TS	PF-433-56099-01	\$94
200 HP	4	447/9T	PF-433-56098-01	\$94
200 HP	6	447/9T	PF-433-56098-01	\$94
250 HP	2	447/9TS	PF-D33-14465-12	\$94
250 HP	4	447/9T	PF-433-56098-01	\$94
250 HP	6	447/9T	PF-D33-14465-25	\$94
300 HP	2	S447/9TS	PF-D34-14834-13	\$94
300 HP	4	447/9T	PF-D33-14465-24	\$94
300 HP	6	S447/9T	PF-D34-14834-20	\$94
350 HP	2	S447/9TS	PF-D34-14834-13	\$94
350 HP	4	S447/9T	PF-D34-14834-20	\$94
400 HP	2	S447/9TS	PF-D34-14834-13	\$94
400 HP	4	S447/9T	PF-D34-14834-20	\$94

HARVEST SERIES VHS TEFC COUPLING KITS					
Frame	Model No.	BX (inch)	Keyway		List Price
			Width	Depth	
213TP ~ 256TP	CPLG2125075	0.751	0.188	0.109	\$219
	CPLG2125087	0.876	0.188	0.109	
	*CPLG2125100	1.000	0.250	0.140	
	CPLG2125118	1.118	0.250	0.140	
	CPLG2125125	1.251	0.250	0.140	
	*CPLG2125BLK	0.751 (Blank Coupling)	N/A	N/A	
284TP ~ 286TP	*CPLG280100	1.001	0.250	0.140	\$293
	CPLG280118	1.188	0.250	0.140	
	CPLG280125	1.251	0.250	0.140	
	*CPLG280BLK	1.001 (Blank Coupling)	N/A	N/A	
324TP ~ 326TP	CPLG320100	1.001	0.250	0.140	\$706
	CPLG320118	1.188	0.250	0.140	
	*CPLG320125	1.251	0.250	0.140	
	CPLG320125	1.251	0.375	0.140	
	CPLG320143	1.438	0.375	0.140	
	CPLG320150	1.501	0.375	0.140	
	*CPLG320BLK	1.001 (Blank Coupling)	N/A	N/A	
364TP ~ 365TP	CPLG360118	1.188	0.250	0.140	\$778
	*CPLG360125	1.251	0.375	0.140	
	CPLG360143	1.438	0.375	0.140	
	CPLG360150	1.501	0.375	0.140	
	CPLG360168	1.688	0.375	0.203	
	CPLG360175	1.751	0.375	0.203	
	*CPLG360BLK	1.001 (Blank Coupling)	N/A	N/A	
404TP ~ 405TP	CPLG400118	1.188	0.250	0.140	\$847
	CPLG400150	1.501	0.375	0.140	
	*CPLG400168	1.688	0.375	0.203	
	CPLG400175	1.751	0.375	0.203	
	CPLG400193	1.938	0.375	0.203	
	*CPLG400BLK	1.188 (Blank Coupling)	N/A	N/A	
444TP ~ 445TP New Style	CPLGN440150	1.501	0.375	0.168	\$890
	*CPLGN440168	1.688	0.375	0.171	
	CPLGN440193	1.938	0.500	0.222	
	*CPLGN440BLK	1.501 (Blank Coupling)	N/A	N/A	
444TP ~ 449TP	CPLG440150	1.501	0.375	0.140	\$934
	*CPLG440168	1.688	0.375	0.203	
	CPLG440193	1.938	0.500	0.222	
	CPLG440200	2.001	0.500	0.222	
	CPLG440218	2.188	0.500	0.226	
	CPLG440225	2.251	0.500	0.226	
	*CPLG440BLK	1.188 (Blank Coupling)	N/A	N/A	

* = Stocked in CA.

New Style = 44.78" CD

KITS INCLUDE MOUNTING HARDWARE FOR EASY INSTALLATION

HARVEST SERIES VHS TEFC P-BASE FLANGES			
Frame	BD SIZE	MODEL NO.	LIST PRICE
213/5TP	10	TK21010-PBASE	\$266
254/6TP	*10	TK25010-PBASE	\$414
	12	TK25012-PBASE	\$527
284/6TP	10	TK28010-PBASE	\$578
	*12	TK28012-PBASE	\$578
	16.5	TK28016-PBASE	\$578
324/6TP	12	TK32012-PBASE	\$578
	*16.5	TK32016-PBASE	\$715
364/5TP	*16.5	TK36016-PBASE	\$1,031
	20	TK36020-PBASE	\$1,246
404/5TP	*16.5	TK40016-PBASE	\$1,031
	20	TK40020-PBASE	\$1,246
444/5TP	*16.5	TK44016-PBASE	\$1,301
	20	TK44020-PBASE	\$1,559
	24.5	TK44024-PBASE	\$1,699
447TP	*16.5	TK447/916-PBASE	\$1,430
	20	TK447/920-PBASE	\$1,742
	24.5	TK447/924-PBASE	\$1,742
449TP	16.5	TK447/916-PBASE	\$1,430
	*20	TK447/920-PBASE	\$1,742
	24.5	TK447/924-PBASE	\$1,742

* Standard Base.

KITS INCLUDE MOUNTING HARDWARE FOR EASY INSTALLATION

HARVEST SERIES VHS TEFC Steady Bushing Kits			
Frame	MODEL NO.	BX (in.)	LIST PRICE
210TP/250TP	SB434-43588-91 *	1.000	\$213
210TP/250TP	SB434-43588-92	0.937	\$213
210TP/250TP	SB434-43588-93	0.875	\$213
210TP/250TP	SB434-43588-94 *	0.750	\$213
250TP	SB434-43588-95	1.250	\$213
250TP	SB434-43588-96	1.187	\$213
280TP	SB434-43589-91	1.250	\$247
280TP	SB434-43589-92	1.187	\$247
280TP	SB434-43589-93 *	1.000	\$247
280TP	SB434-43589-94	0.875	\$247
280TP	SB434-43589-95 *	0.750	\$247
320TP	SB434-43590-91 *	1.500	\$272
320TP	SB434-43590-92	1.437	\$272
320TP	SB434-43590-93	1.250	\$272
320TP	SB434-43590-94 *	1.187	\$272
320TP	SB434-43590-95	1.126	\$272
320TP	SB434-43590-96 *	1.000	\$272
360TP	SB434-43591-91 *	1.500	\$297
360TP	SB434-43591-92	1.437	\$297
360TP	SB434-43591-93	1.250	\$297
360TP	SB434-43591-94 *	1.187	\$297
360TP	SB434-43591-95	1.126	\$297
360TP	SB434-43591-96 *	1.000	\$297
400TP	SBD34-11114-91	1.750	\$313
400TP	SBD34-11114-92	1.687	\$313
400TP	SBD34-11114-93	1.500	\$313
400TP	SBD34-11114-94	1.437	\$313
400TP	SBD34-11114-95	1.250	\$313
400TP	SBD34-11114-96	1.187	\$313
400TP	SBD34-11114-97	1.000	\$313
400TP	SBD34-11114-98	1.937	\$313
440TP / 447TP / 449TP	SBD34-11118-91	1.750	\$466
440TP / 447TP / 449TP	SBD34-11118-92	1.687	\$466
440TP / 447TP / 449TP	SBD34-11118-93	1.500	\$466
440TP / 447TP / 449TP	SBD34-11118-94	1.437	\$466
440TP / 447TP / 449TP	SBD34-11117-99	1.937	\$466
447TP / 449TP	SBD34-11117-91	2.500	\$466
447TP / 449TP	SBD34-11117-92	2.437	\$466
447TP / 449TP	SBD34-11117-93	2.375	\$466
447TP / 449TP	SBD34-11117-94	2.250	\$466
447TP / 449TP	SBD34-11117-95	2.187	\$466
447TP / 449TP	SBD34-11117-96	2.125	\$466
447TP / 449TP	SBD34-11117-97	2.062	\$466
447TP / 449TP	SBD34-11117-98	2.000	\$466

* = Stocked in CA.

KITS INCLUDE MOUNTING HARDWARE FOR EASY INSTALLATION

HARVEST SERIES VHS WPI Coupling Kits					
Frame	MODEL NO.	BX (in.)	Keyway (in.)		LIST PRICE
			Width	Depth	
210TP	CP434-59232-91 *	1.001	0.250	0.140	\$172
	CP434-59232-92 *	0.751 Blank	N/A	N/A	\$172
250TP	CP434-59233-91 *	1.001	0.250	0.140	\$172
	CP434-59233-92	1.188	0.250	0.140	\$172
	CP434-59233-93	1.251	0.250	0.140	\$172
	CP434-59233-94 *	0.751 Blank	N/A	N/A	\$172
280TP	CP434-59234-91 *	1.001	0.250	0.140	\$191
	CP434-59234-92	1.188	0.250	0.140	\$191
	CP434-59234-93	1.251	0.250	0.140	\$191
	CP434-59234-94 *	0.751 Blank	N/A	N/A	\$191
320TP ~ 360TP	CP434-59235-91	1.001	0.250	0.140	\$447
	CP434-59235-92 *	1.188	0.250	0.140	\$447
	CP434-59235-93	1.251	0.250	0.140	\$447
	CP434-59235-94	1.251	0.375	0.164	\$447
	CP434-59235-95	1.438	0.375	0.167	\$447
	CP434-59235-96 *	1.501	0.375	0.168	\$447
	CP434-59235-97 *	1.001 Blank	N/A	N/A	\$447
400TP	CP434-59236-91	1.188	0.250	0.140	\$638
	CP434-59236-92 *	1.251	0.375	0.140	\$638
	CP434-59236-93	1.438	0.375	0.140	\$638
	CP434-59236-94	1.501	0.375	0.140	\$638
	CP434-59236-95 *	1.688	0.375	0.203	\$638
	CP434-59236-96	1.751	0.375	0.203	\$638
	CP434-59236-97 *	1.001 Blank	N/A	N/A	\$638
440TP	CP434-59237-91	1.188	0.250	0.116	\$700
	CP434-59237-92 *	1.501	0.375	0.168	\$700
	CP434-59237-93	1.688	0.375	0.171	\$700
	CP434-59237-94	1.751	0.375	0.171	\$700
	CP434-59237-95 *	1.938	0.500	0.222	\$700
	CP434-59237-96 *	1.188 Blank	N/A	N/A	\$700
447TP & 449TP	CP434-59238-91 *	1.501	0.375	0.168	\$809
	CP434-59238-92	1.688	0.375	0.171	\$809
	CP434-59238-93 *	1.938	0.500	0.222	\$809
	CP434-59238-94 *	2.188	0.500	0.226	\$809
	CP434-59238-95	2.251	0.500	0.226	\$809
	CP434-59238-96 *	1.501 Blank	N/A	N/A	\$809

* = Stocked in CA.

KITS INCLUDE MOUNTING HARDWARE FOR EASY INSTALLATION

HARVEST SERIES VHS WPI P-BASE FLANGES			
Frame	BD SIZE (in.)	MODEL NO.	LIST PRICE
213TP10/215TP10	10.0 *	PB432-11480-01	\$384
213TP12/215TP12	12.0	PB432-11480-02	\$384
254TP10/256TP10	10.0 *	PB433-39673-01	\$478
254TP12/256TP12	12.0 *	PB433-39673-12	\$478
254TP16/256TP16	16.5	PB433-39673-17	\$575
284TP10/286TP10	10.0	PB432-11846-17	\$722
284TP12/286TP12	12.0 *	PB432-11846-01	\$722
284TP16/286TP16	16.5	PB432-11846-12	\$775
324TP12/326TP12	12.0	PB432-11949-01	\$834
324TP16/326TP16	16.5 *	PB432-11949-02	\$834
364TP12/365TP12	12.0	PB432-11884-01	\$1,200
364TP16/365TP16	16.5 *	PB432-11884-02	\$1,200
404TP16/405TP16	16.5 *	PB432-11947-01	\$1,278
404TP20/405TP20	20.0	PB432-11947-02	\$1,278
444TP16/445TP16	16.5 *	PB432-11986-01	\$2,397
444TP20/445TP20	20.0 *	PB432-11986-02	\$2,397
444TP24/445TP24	24.0	PB432-11986-03	\$2,638
447TP20/449TP16	16.5	PB432-13253-01	\$2,728
447TP20/449TP20	20.0 *	PB432-13253-02	\$3,397
447TP20/449TP24	24.0	PB432-13253-03	\$3,541

* Standard Base.

KITS INCLUDE MOUNTING HARDWARE FOR EASY INSTALLATION

HARVEST SERIES VHS WPI Steady Bushing Kits			
Frame	MODEL NO.	BX (in.)	LIST PRICE
210TP/250TP	SB434-43588-91 *	1.000	\$213
210TP/250TP	SB434-43588-92	0.937	\$213
210TP/250TP	SB434-43588-93	0.875	\$213
210TP/250TP	SB434-43588-94 *	0.750	\$213
250TP	SB434-43588-95	1.250	\$213
250TP	SB434-43588-96	1.187	\$213
280TP	SB434-43589-91	1.250	\$247
280TP	SB434-43589-92	1.187	\$247
280TP	SB434-43589-93 *	1.000	\$247
280TP	SB434-43589-94	0.875	\$247
280TP	SB434-43589-95 *	0.750	\$247
320TP	SB434-43590-91 *	1.500	\$272
320TP	SB434-43590-92	1.437	\$272
320TP	SB434-43590-93	1.250	\$272
320TP	SB434-43590-94 *	1.187	\$272
320TP	SB434-43590-95	1.126	\$272
320TP	SB434-43590-96 *	1.000	\$272
360TP	SB434-43591-91 *	1.500	\$297
360TP	SB434-43591-92	1.437	\$297
360TP	SB434-43591-93	1.250	\$297
360TP	SB434-43591-94 *	1.187	\$297
360TP	SB434-43591-95	1.126	\$297
360TP	SB434-43591-96 *	1.000	\$297
400TP / 440TP	SB434-43592-91	1.750	\$313
400TP / 440TP	SB434-43592-92 *	1.687	\$313
400TP / 440TP	SB434-43592-93 *	1.500	\$313
400TP / 440TP	SB434-43592-94	1.437	\$313
400TP / 440TP	SB434-43592-95 *	1.250	\$313
400TP / 440TP	SB434-43592-96 *	1.187	\$313
400TP / 440TP	SB434-43592-97 *	1.000	\$313
447TP / 449TP	SB434-53091-91	2.500	\$466
447TP / 449TP	SB434-53091-92	2.437	\$466
447TP / 449TP	SB434-53091-93	2.375	\$466
447TP / 449TP	SB434-53091-94	2.250	\$466
447TP / 449TP	SB434-53091-95 *	2.187	\$466
447TP / 449TP	SB434-53091-96	2.125	\$466
447TP / 449TP	SB434-53091-97	2.062	\$466
447TP / 449TP	SB434-53091-98	2.000	\$466
447TP / 449TP	SB434-53091-99 *	1.937	\$466
447TP / 449TP	SB434-53092-91	1.750	\$466
447TP / 449TP	SB434-53092-92	1.687	\$466
447TP / 449TP	SB434-53092-93 *	1.500	\$466
447TP / 449TP	SB434-53092-94	1.437	\$466

* = Stocked in CA.



MODEL NUMBER CODE

Ex. = WH0014FFAC = W Series, NEMA Premium, 1 HP, 4P, TEFC, Foot Mounted, 60/208/230/460, Cast Iron T-Box & Fan Cover

W	H	100	4	F	F	A	C
Series	Type	HP	Poles	Enclosure	Features	Hz/Volts	Remarks
A-Stainless Steel Frame H- Vertical Harvest Series S-56 Rolled Steel Frame T-56 Cast Iron Frame W-Horizontal Frame	B-NEMA Design B Std Eff C-NEMA Design C High Torque D-NEMA Design D 5-8 % Slip J-EPAAct Extra Max H-NEMA Premium Super Max	1P4 = 1/4 1P2 = 1/2 1P3 = 3/4 1Y7 = 1.5 7Y5 = 7.5 001 = 1 002 = 2 003 = 3 005 = 5 010 = 10 015 = 15 025 = 25 030 = 30 040 = 40 050 = 50 060 = 60 075 = 75 100 = 100 125 = 125 150 = 150 200 = 200	2 = 2p (3600 rpm) 4 = 4p (1800 rpm) 6 = 6p (1200 rpm) 8 = 8p (900 rpm) 1 = 10p (720 rpm) 3 = 12p (600 rpm) 5 = 14p (514 rpm) 7 = 16p (450 rpm) 9 = 18p (400 rpm)	A - Kiln duty ODP 115°C 1.15S.F B - WP-I Solid Shaft High Thrust C - Kiln duty ODP 135°C 1.15S.F D - Open Drip Proof E - Explosion Proof Class I Division 1 Group D Class II Division 1 Group E,F&G F- TEFC G - WPI H - Crusher Duty I - TEFC Inverter Duty J - TEFC IEEE841 K - Kiln Duty ODP 115°C 1.0S.F L - Kiln Duty TEFC N - TENV U - TEFC Hollow Shaft High Thrust V - WP-I Hollow Shaft High Thrust W - WP-II X - Explosion Proof Class I Division 1 Group D Y - Kiln Duty ODP 135°C 1.0S.F Z - TEFC Solid Shaft High Thrust	B - C-Face Footed C - C-Face Footless D - D-Flange Footless E - D-Flange Footed F - Foot Mount G - C-Face Footless With Locked Bearing H - C-Face Footed With Locked Bearing J - JM Close-Coupled Pump Motor K - JP Close-Coupled Pump Motor P - P-Base Footless U - 8 Hole Foot Mounted V - Short Shaft X - Special Features Y - C Face, Foot-Mounted NEMA Short Shaft 1800 rpm & Slower Z - Foot Mount NEMA Short Shaft 1800 rpm & Slower	A - 60/230/460 Usable at 200V B - 60/460 C - 60/230 H - 60/575 I - 60/230/460 J - 60/Special Voltage O - 50/380 T - 50/Special Voltage U - 50/190/380 60/230/460 Z - 60/380 7 - 60/2300/4160	A - Cast Iron Fan B - TS21FN Series+RTD+Heater C - Cast Iron T-Box & Fan Cover D - Cast iron Fan,C.I T-box and C.I Fan Guard E - TS21DN Series+RTD+Heater F - Cast Iron Fan Guard G - Special NEMA Diameter Shaft and(or) Flange H - TS21F Series J - NEMA PREMIUM EFFICIENCY (Except WH series) K - TS21FN Series L - Roller Bearing N - New S Series Field Convertable F1 to F2, 8 hole foot mounted P - TW21T Series Q - TW21TN Series R - TS21WN Series T - Cast Iron T-Box U - TS21W Series V - TS21DN Series(JUBD Update) W - WP-II Series X - Special Y - TS21D Series P10 - P Base 10" P12 - P Base 12" P16 - P Base 16" P20 - P Base 20" P24 - P Base 24" 5 - 56 frame steel T-box & fan cover Bold N = New Motor Redesign

This is a partial listing ONLY - Please contact Tatung for complete listing.

Motor Synchronous Speeds (RPM)

Frequency	NUMBER of POLES								
	2	4	6	8	10	12	14	16	18
60 Hertz	3600	1800	1200	900	720	600	514	450	400
50 Hertz	3000	1500	1000	750	600	500	428	375	334

TATUNG ELECTRIC CO. of AMERICA, INC.

14381 Chambers Road Tustin, CA 92780

Office 1-800-828-8641 Fax 714-838-3295 E-Mail sales@tatungelectric.com



TATUNG ELECTRIC CO. of AMERICA, INC.

FREIGHT POLICY

1. Orders \$5,000.00 and above, Tatung will pay for any shipping expenses.
2. Any orders under \$5,000.00, the customer will pay for any shipping expense.

As Tatung Electric Co. of America, Inc. is paying for the transportation, we reserve the right to select the carrier. We will select a carrier that delivers an acceptable level of service to the distributor and meets their expectations. If a distributor request a higher cost carrier, air freight, or special delivery service, the distributor is responsible for that additional cost.

Tatung Electric Co. of America, Inc. ships all electric motors in a cardboard box or in a wooden crate. If the box or crate is damaged when the distributor receives it, it should be noted on the freight carrier's proof of delivery. These motors could have broken feet, internal bearing damage, etc. When you sign the proof of delivery, you are accepting the responsibility of any external or internal damage. You may want to take digital pictures of the damaged boxes or crates, or write a description of the damage on the freight carrier's proof of delivery. Tatung will work with you to resolve these freight damage issues to everyone's mutual satisfaction.

If you have any questions concerning these freight issues, please call us. Your continued support of Tatung Electric Co. of America, Inc. is greatly appreciated.



TATUNG ELECTRIC CO. OF AMERICA, INC.

WARRANTY POLICY

ALL ELECTRIC MOTORS AND RENEWAL PARTS SOLD BY TATUNG ARE WARRANTED TO BE FREE FROM DEFECTS IN MATERIAL AND WORKMANSHIP. THE WARRANTY PERIOD IS:

ALL STANDARD PRODUCTS ARE **18 MONTHS** FROM DATE OF INVOICE OR **24 MONTHS** FROM DATE OF MANUFACTURE, WHICHEVER PERIOD SHALL EXPIRE FIRST.

SUPER MAX PRODUCTS ARE 36 MONTHS FROM DATE OF INVOICE OR **42 MONTHS** FROM DATE OF MANUFACTURE, WHICHEVER PERIOD SHALL EXPIRE FIRST.

SUPER MAX-841 SEVERE DUTY PRODUCTS ARE 60 MONTHS FROM DATE OF INVOICE OR **66 MONTHS** FROM DATE OF MANUFACTURE, WHICHEVER PERIOD SHALL EXPIRE FIRST.

ALL NON-STOCK MOTORS OR CUSTOM MOTORS ARE **12 MONTHS** AFTER OPERATION OR **18 MONTHS** AFTER SHIPMENT

TATUNG SHALL, AT ITS OPTION AND EXPENSE, EITHER REPAIR OR REPLACE, F.O.B. WAREHOUSE, ANY SUCH PRODUCT OR PART WHICH IS DEFECTIVE WITHIN THE WARRANTY PERIOD. TO BE COVERED UNDER WARRANTY, ANY PRODUCT MUST HAVE AT ALL TIMES BEEN OPERATED OR USED UNDER NORMAL OPERATION CONDITIONS FOR WHICH THEY WERE DESIGNED.

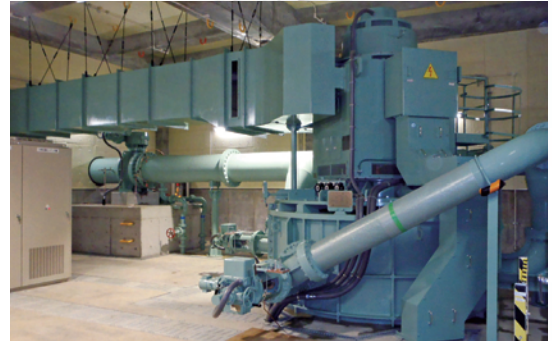
IN THE EVENT OF WARRANTY CLAIMS, TATUNG OR ITS REPRESENTATIVE MUST BE NOTIFIED PROMPTLY FOLLOWING ANY PRODUCT FAILURE. THE PRODUCT SHOULD BE SENT TO A TATUNG AUTHORIZED SERVICE CENTER TO DIAGNOSE THE CAUSE OF FAILURE. AFTER THIS EXAMINATION, A DETERMINATION WILL BE MADE IF THE FAILURE WAS CAUSED BY DEFECTIVE MATERIAL AND / OR WORKMANSHIP. IF THE FAILURE WAS DUE TO DEFECTIVE MATERIAL AND / OR WORKMANSHIP, TATUNG WILL REPLACE OR REPAIR THE PRODUCT.

TATUNG'S LIABILITY UNDER THIS WARRANTY OR ANY OTHER WARRANTY WHETHER EXPRESSED OR IMPLIED IN LAW OR FACT SHALL BE LIMITED TO THE REPAIR OR REPLACEMENT OF DEFECTIVE MATERIAL AND WORKMANSHIP, AND IN NO EVENT SHALL TATUNG BE LIABLE FOR ANY DAMAGES, INCLUDING FREIGHT, LOST PROFITS, LOST SAVINGS OR OTHER INCIDENTAL / CONSEQUENTIAL DAMAGES.

SOME STATES DO NOT ALLOW LIMITATIONS ON HOW LONG AN IMPLIED WARRANTY LASTS, SO THE ABOVE LIMITATION MAY NOT APPLY TO YOU.

TATUNG IS NOT RESPONSIBLE FOR REMOVAL AND SHIPPING OF THE TATUNG MOTOR TO THE SERVICE CENTER, THE REINSTALLATION OF THE TATUNG PRODUCT UPON IT'S RETURN TO THE CUSTOMER, OR ANY INCIDENTAL OR CONSEQUENTIAL DAMAGES RESULTING FROM THE DEFECT, REMOVAL, REINSTALLATION, SHIPMENT OR OTHERWISE.

PLEASE CONTACT **TATUNG** at 1-800-828-8641 or your local distributor for warranty claim procedure.



TATUNG Electric Company of America, Inc.

14381 Chambers Road, Tustin, CA 92780
Tel: 1-714-8383293
Fax: 1-714-8383295
E-mail: sales@tatungelectric.com
Toll Free 1-800-828-8641
Web: www.tatungelectric.com

Tatung Co.

22 Chungshan N. Rd., 3rd Sec. Taipei,
10435, Taiwan
Tel: 886-2-2599-5429, 866-2-2592-5252
ext.2403, 2489, 2908
Fax: 866-2-2598-4427

Sanhsia Plant

352, Shitong Rd., Sanhsia, 23743,
New Taipei City, Taiwan, R.O.C.
Tel: 886-2-8676-6888
E-mail: service@sansha.tatung.com.tw

TATUNG (Shanghai) Co., Ltd.

No. 5299 Beisong Road, Chedun Town
Songjiang District, Shanghai 201611, China
Tel: 86-21-57605299 ext. 206, 288
Fax: 86-21-57605266
E-mail: export@tatungsh.net