

DC MOTOR SERIES



DC MOTOR D-CUT TYPE
DC MOTOR GEARED TYPE

DC Motor Coding

DD

90

—

F

180

200

SHAFT TYPE	
DD	D-CUT Type
DG	DC Geared Type
DK	DC Key Type

Flange Size	
60	□60mm(ø60)
80	□80mm(ø80)
90	□90mm(ø80)
95	□90mm(ø90)

Input Voltage	
012	12V
024	24V
090	90V
180	180V

Output	
005	5W
.	.
.	.
.	.
500	500W

Magnet Type	
F	Ferrite

DC60 SERIES

DD60

- ◆ □60mm
- ◆ 12V/24V/90V/180V
- ◆ 15W/30W/50W
- ◆ D-CUT TYPE SHAFT



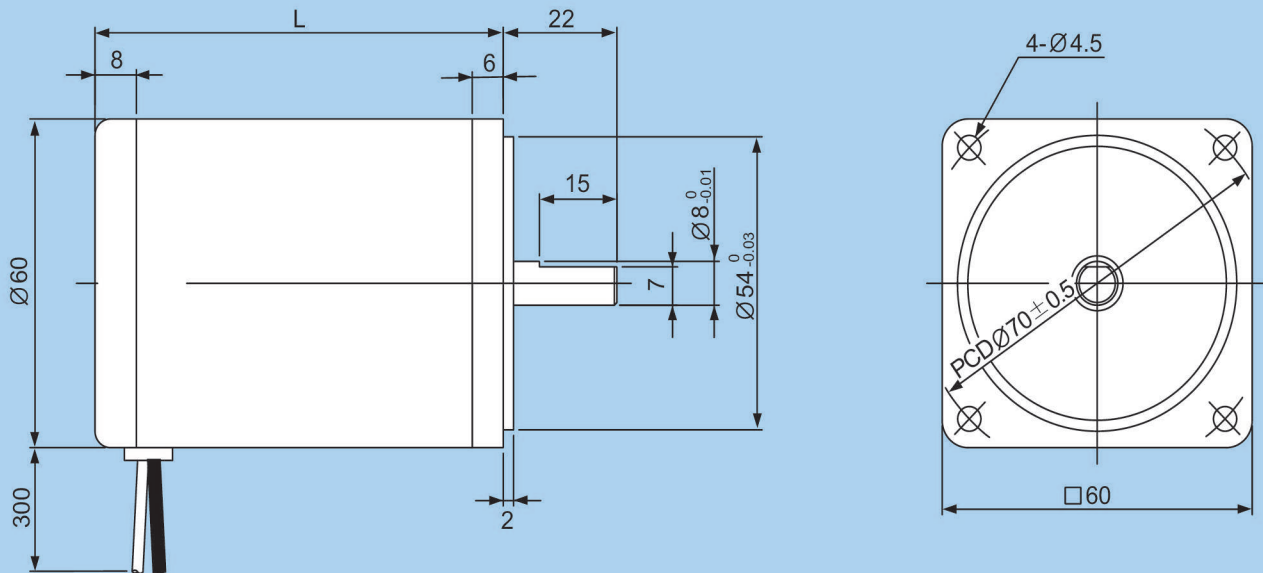
Unit : mm

Specifications

MODEL		DD60										
		F012015	F012030	F024015	F024030	F024050	F090015	F090030	F090050	F180015	F180030	F180050
Rated Voltage	V	12		24			90			180		
Rated Output	W	15	30	15	30	50	15	30	50	15	30	50
Rated Current	A	1.8	3.5	0.9	1.8	3.0	0.2	0.5	0.8	0.1	0.2	0.4
Rated Speed	rpm	3000										
Rated Torque	kgf-cm	0.5	1.0	0.5	1.0	1.6	0.5	1.0	1.9	0.5	1.0	1.6
Weight	kg	0.8	1.2	0.7	1.0	1.2	0.7	0.8	1.2	0.8	1.0	1.2

The specifications above are subject to change for enhancement of product performance, Without any prior notice.

Dimension



L	MODEL
79	F024015 / F090015
89	F012015 / F090030 / F180015
99	F024030 / F180030
109	F012030 / F024050 / F090050 / F180050

DC60 SERIES

DG60

- ◆ □60mm
- ◆ 12V/24V/90V/180V
- ◆ 15W/30W/50W
- ◆ GEARED TYPE SHAFT



Specifications

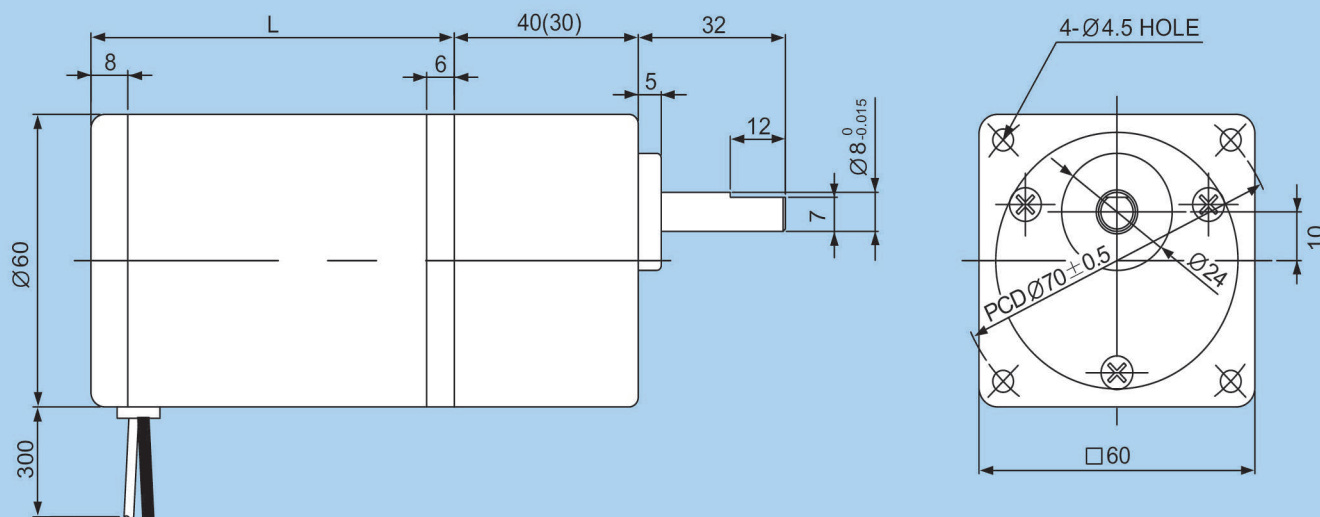
Unit : mm

MODEL		DG60										
		F012015	F012030	F024015	F024030	F024050	F090015	F090030	F090050	F180015	F180030	F180050
Rated Voltage	V	12		24			90			180		
Rated Output	W	15	30	15	30	50	15	30	50	15	30	50
Rated Current	A	1.8	3.5	0.9	1.8	3.0	0.2	0.5	0.8	0.1	0.2	0.4
Rated Speed	rpm	*15~1000										
Rated Torque	kgf-cm	1.2~30	2.4~30	1.2~30	2.4~30	3.9~30	1.2~30	2.4~30	3.9~30	1.2~30	2.4~30	3.9~30
Weight	kg	1.1	1.5	1.0	1.3	1.5	1.0	1.3	1.5	1.0	1.3	1.5

* The velocity depends on the rate of the reduction gear.

▶ The specifications above are subject to change for enhancement of product performance, Without any prior notice.

Dimension



GEAR HEAD SIZE

GEAR RATIO	SIZE
3 / 1 ~ 18 / 1	30
20 / 1 ~ 200 / 1	40

L	MODEL
79	F024015 / F090015
89	F012015 / F090030 / F180015
99	F024030 / F180030
109	F012030 / F024050 / F090050 / F180050

DC80 SERIES

DD80

- ◆ □80mm
- ◆ 12V/24V/90V/180V
- ◆ 25W/30W/40W/60W
- ◆ D-CUT TYPE SHAFT



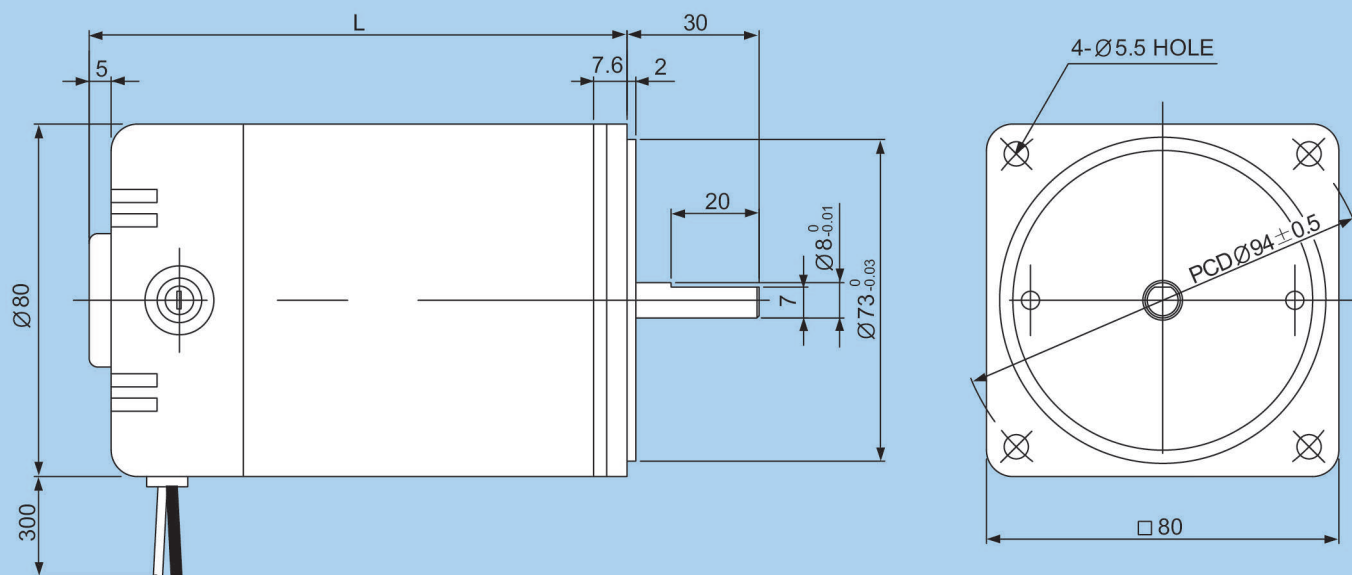
Specifications

Unit : mm

MODEL		DD80											
		F012030	F012040	F012060	F024025	F024040	F024060	F090030	F090040	F090060	F180030	F180040	F180060
Rated Voltage	V	12			24			90			180		
Rated Output	W	30	40	60	25	40	60	30	40	60	30	40	60
Rated Current	A	3.5	4.7	7.0	1.5	2.3	3.5	0.5	0.6	0.9	0.2	0.3	0.5
Rated Speed	rpm	3000											
Rated Torque	kgf-cm	1.0	1.3	1.9	1.0	1.3	1.9	1.0	1.3	1.9	1.0	1.3	1.9
Weight	kg	1.4	1.5	1.9	1.4	1.5	1.9	1.4	1.5	1.9	1.4	1.5	1.9

The specifications above are subject to change for enhancement of product performance, Without any prior notice.

Dimension



L	MODEL
122.1	F012030 / F012040 / F024025 / F024040 / F090030 / F090040 / F180030 / F180040
139.6	F012060 / F024060 / F090060 / F180060

DC80 SERIES

DG80

- ◆ □80mm
- ◆ 12V/24V/90V/180V
- ◆ 25W/30W/40W/60W
- ◆ GEARED TYPE SHAFT



Unit : mm

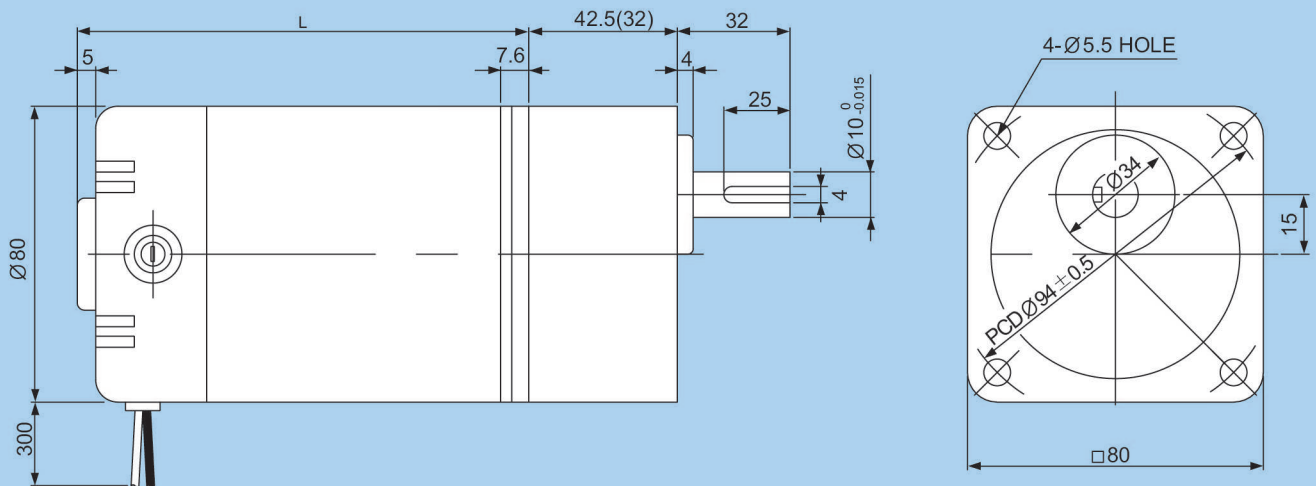
Specifications

MODEL		DG80											
		F012030	F012040	F012060	F024025	F024040	F024060	F090030	F090040	F090060	F180030	F180040	F180060
Rated Voltage	V	12			24			90			180		
Rated Output	W	30	40	60	25	40	60	30	40	60	30	40	60
Rated Current	A	3.5	4.7	7.0	1.5	2.3	3.5	0.5	0.6	0.9	0.2	0.3	0.5
Rated Speed	rpm	*15~1000											
Rated Torque	kgf-cm	2.4~80	3.2~80	4.6~80	2.4~80	3.2~80	4.6~80	2.4~80	3.2~80	4.6~80	2.4~80	3.2~80	4.6~80
Weight	kg	1.9	2.1	2.4	1.9	2.1	2.4	1.9	2.1	2.4	1.9	2.1	2.4

* The velocity depends on the rate of the reduction gear.

▶ The specifications above are subject to change for enhancement of product performance, Without any prior notice.

Dimension



GEAR HEAD SIZE

GEAR RATIO	SIZE
3 / 1 ~ 18 / 1	32
20 / 1 ~ 200 / 1	42.5

L	MODEL
122.1	F012030 / F012040 / F024025 / F024040 / F090030 / F090040 / F180030 / F180040
139.6	F012060 / F024060 / F090060 / F180060

DC90 SERIES

DD90

- ◆ □90mm, Ø80mm
- ◆ 12V/24V/90V/180V
- ◆ 60W/90W/120W/150W/200W/250W
- ◆ D-CUT TYPE SHAFT



Unit : mm

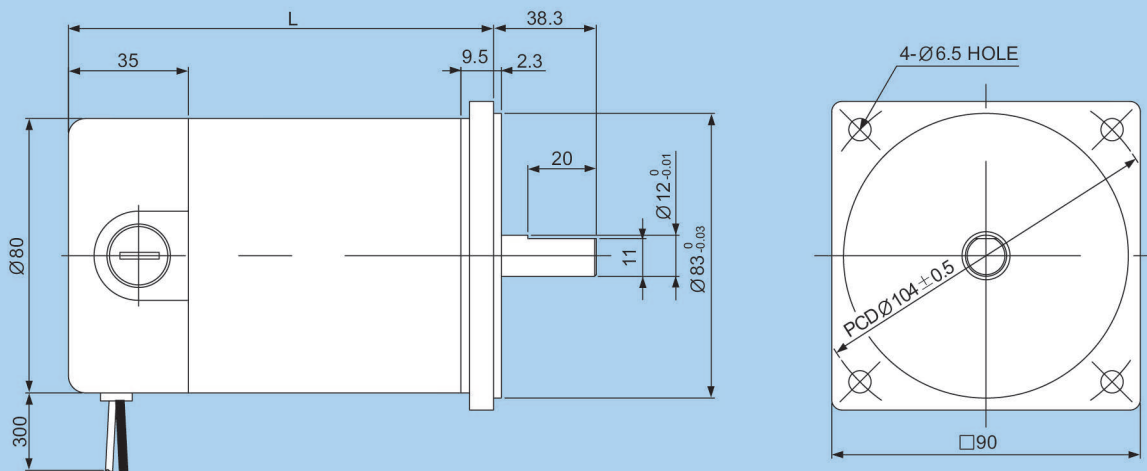
Specifications

MODEL		DD90							
		F012060	F012090	F012120	F012150	F024060	F024090	F024120	F024150
Rated Voltage	V	12				24			
Rated Output	W	60	90	120	150	60	90	120	150
Rated Current	A	7.0	10.6	14.1	17.6	3.5	5.3	7.0	8.8
Rated Speed	rpm	3000							
Rated Torque	kgf-cm	1.9	2.9	3.9	4.9	1.9	2.9	3.9	4.9
Weight	kg	2.1	2.2	2.9	3.4	2.1	2.2	2.9	3.1

MODEL		DD90										
		F090060	F090090	F090120	F090150	F090200	F180060	F180090	F180120	F180150	F180200	F180250
Rated Voltage	V	90					180					
Rated Output	W	60	90	120	150	200	60	90	120	150	200	250
Rated Current	A	0.9	1.4	1.9	2.3	3.1	0.5	0.7	0.9	1.2	1.6	2.0
Rated Speed	rpm	3000										
Rated Torque	kgf-cm	1.9	2.9	3.9	4.9	6.5	1.9	2.9	3.9	4.9	6.5	8.1
Weight	kg	2.1	2.2	2.9	3.0	3.1	2.1	2.2	2.9	3.0	3.1	3.4

The specifications above are subject to change for enhancement of product performance, Without any prior notice.

Dimension



L	MODEL
141.5	F012060 / F012090 / F024060 / F024090 / F090060 / F090090 / F180060 / F180090
159.5	F012120 / F024120 / F024150 / F090120 / F090150 / F180120 / F180150 / F180200
184.5	F012150 / F090200 / F180250

DC90 SERIES

DG90 (강력형)

- ◆ □90mm, Ø80mm
- ◆ 12V/24V/90V/180V
- ◆ 60W/90W/120W/150W/200W/250W
- ◆ GEARED TYPE SHAFT



Unit : mm

Specifications

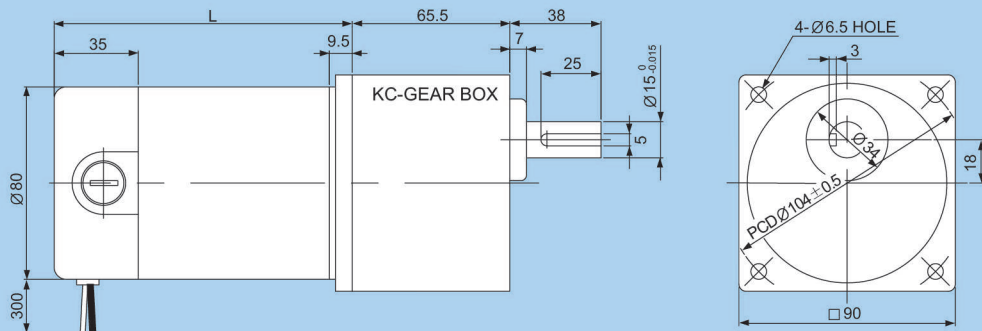
MODEL		DG90 (강력형)							
		F012060	F012090	F012120	F012150	F024060	FF024090	F024120	F024150
Rated Voltage	V	12				24			
Rated Output	W	60	90	120	150	60	90	120	150
Rated Current	A	7.0	10.6	14.1	17.6	3.5	5.3	7.0	8.8
Rated Speed	rpm	* 15~1000							
Rated Torque	kgf-cm	4.6~200	7.0~200	9.5~200	11.9~200	4.6~200	7.0~200	9.5~200	11.9~200
Weight	kg	3.1	3.5	4.2	4.5	3.1	3.5	4.2	4.5

MODEL		DG90 (강력형)							
		F090060	F090090	F090120	F090150	F180060	F180090	F180120	F180150
Rated Voltage	V	90				180			
Rated Output	W	60	90	120	150	60	90	120	150
Rated Current	A	0.9	1.4	1.9	2.3	0.5	0.7	0.9	1.2
Rated Speed	rpm	* 15~1000							
Rated Torque	kgf-cm	4.6~200	7.0~200	9.5~200	11.9~200	4.6~200	7.0~200	9.5~200	11.9~200
Weight	kg	3.1	3.5	4.3	4.4	3.1	3.5	4.2	4.3

* The velocity depends on the rate of the reduction gear.

The specifications above are subject to change for enhancement of product performance, Without any prior notice.

Dimension



GEAR HEAD SIZE

GEAR RATIO	SIZE
3 / 1 ~ 200 / 1	65.5

L	MODEL
141.5	F012060 / F012090 / F024060 / F024090 / F090060 / F090090 / F180060 / F180090
159.5	F012120 / F024120 / F024150 / F090120 / F090150 / F180120 / F180150 / F180200
184.5	F012150 / F090200 / F180250

DC95 SERIES

DD95

- ◆ □90mm, Ø90mm ◆ 12V/24V/90V/180V
- ◆ 70W/90W/100W/120W/150W/200W/250W/300W/350W/450W/500W
- ◆ D-CUT TYPE SHAFT



Specifications

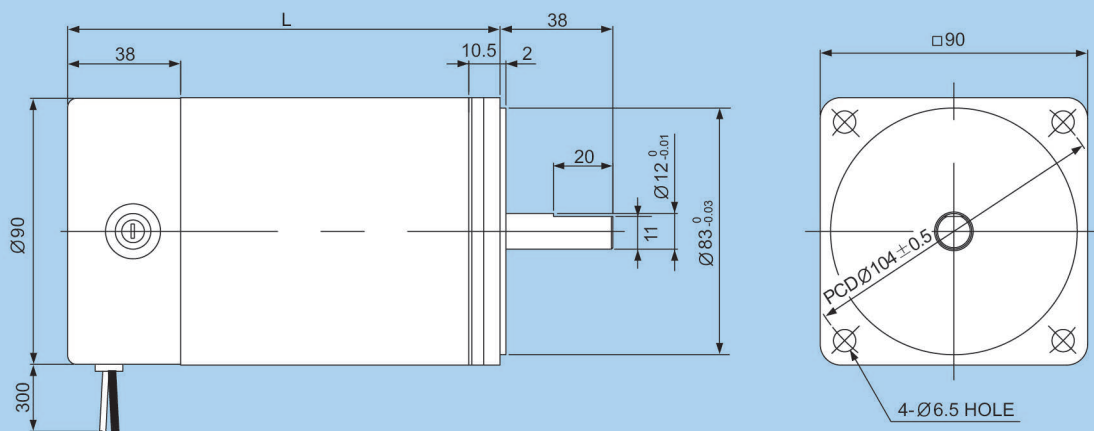
Unit : mm

MODEL		DD95											
		F012060	F012090	F012120	F012150	F012200	F024070	F024090	F024120	F024150	F024200	F024250	F024300
Rated Voltage	V	12						24					
Rated Output	W	70	90	120	150	200	70	90	120	150	200	250	300
Rated Current	A	7.0	10.6	14.1	17.6	23.5	4.2	5.4	7.0	8.9	11.7	14.7	17.9
Rated Speed	rpm	3000											
Rated Torque	kgf-cm	1.9	2.9	3.9	4.9	6.5	2.3	2.9	3.9	4.9	6.5	8.1	9.7
Weight	kg	2.6	2.9	3.0	3.2	3.6	2.6	2.8	3.0	3.1	3.3	3.6	3.8

MODEL		DD95																
		F090100	F090120	F090150	F090200	F090250	F090300	F090350	F090450	F180100	F180120	F180150	F180200	F180250	F180300	F180350	F180450	F180500
Rated Voltage	V	90								180								
Rated Output	W	100	120	150	200	250	300	350	450	100	120	150	200	250	300	350	450	500
Rated Current	A	1.6	1.9	2.3	3.1	4.0	4.7	5.6	7.1	0.8	1.0	1.2	1.6	2.0	2.3	2.8	3.6	4.0
Rated Speed	rpm	3000																
Rated Torque	kgf-cm	3.2	3.9	4.9	6.5	8.1	9.7	11.4	14.6	3.2	3.9	4.9	6.5	8.1	9.7	11.4	14.6	16.2
Weight	kg	2.6	2.7	2.9	3.2	3.4	3.6	3.7	3.8	2.4	2.5	2.6	3.0	3.1	3.4	3.6	3.8	4.0

.....▶ The specifications above are subject to change for enhancement of product performance, Without any prior notice.

Dimension



L	MODEL
120.5	F012060 / F024070 / F024090 / F090100 / F180100 / F180120 / F180150
145.5	F012090 / F012120 / F024120 / F024150 / F090120 / F090150 / F180200
163.5	F012150 / F024200 / F090200 / F090250 / F180250 / F180300 / F180350
188.5	F012200 / F024250 / F024300 / F090300 / F090350 / F090450 / F180450 / F180500

DC95 SERIES

DG95 (강력형)

- ◆ □90mm, Ø90mm ◆ 12V/24V/90V/180V
- ◆ 70W/90W/100W/120W/150W/200W/250W/300W/350W/450W/500W
- ◆ GEARED TYPE SHAFT



Unit : mm

Specifications

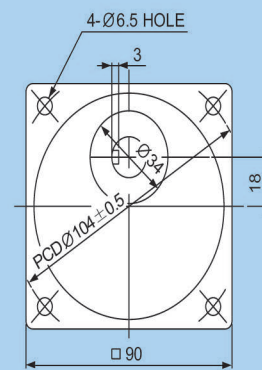
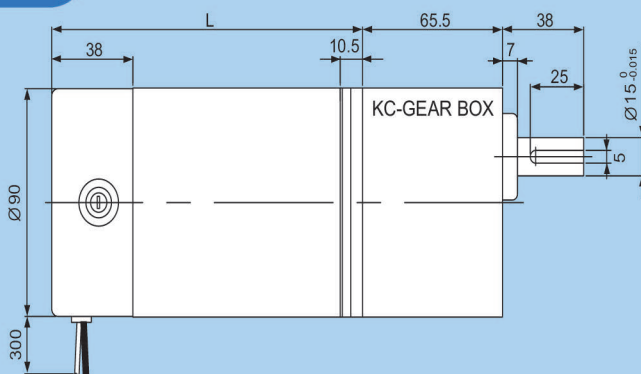
MODEL		DG95 (강력형)							
		F012060	F012090	F012120	F012150	F024070	F024090	F024120	F024150
Rated Voltage	V	12				24			
Rated Output	W	70	90	120	150	70	90	120	150
Rated Current	A	7.0	10.6	14.1	17.6	4.2	5.4	7.0	8.9
Rated Speed	rpm	*15~1000							
Rated Torque	kgf-cm	4.6~200	7.0~200	9.5~200	11.9~200	4.6~200	7.0~200	9.5~200	11.9~200
Weight	kg	3.9	4.2	4.3	4.5	3.9	4.0	4.3	4.5

MODEL		DG95 (강력형)					
		F090100	F090120	F090150	F180100	F180120	F180150
Rated Voltage	V	90			180		
Rated Output	W	100	120	150	100	120	150
Rated Current	A	1.6	1.9	2.3	0.8	1.0	1.2
Rated Speed	rpm	*15~1000					
Rated Torque	kgf-cm	7.8~200	9.5~200	11.9~200	7.8~200	9.5~200	11.9~200
Weight	kg	3.9	4.3	4.5	3.9	4.0	4.2

* The velocity depends on the rate of the reduction gear.

The specifications above are subject to change for enhancement of product performance, Without any prior notice.

Dimension

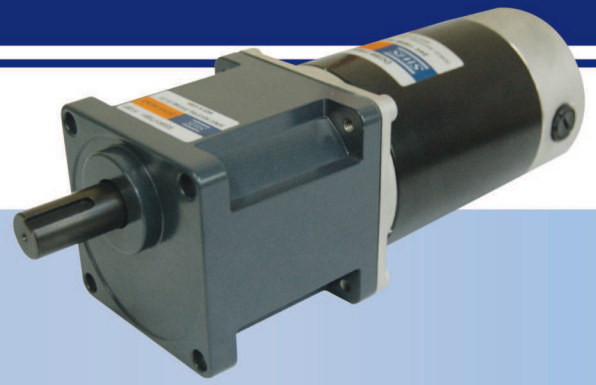


GEAR HEAD SIZE

GEAR RATIO	SIZE
3 / 1 ~ 200 / 1	65.5

L	MODEL
120.5	F012060 / F024070 / F024090 / F090100 / F180100 / F180120 / F180150
145.5	F012090 / F012120 / F024120 / F024150 / F090120 / F090150 / F180200
163.5	F012150 / F024200 / F090200 / F090250 / F180250 / F180300 / F180350
188.5	F012200 / F024250 / F024300 / F090300 / F090350 / F090450 / F180450 / F180500

DC95 SERIES



DG95 (초강력형)

- ◆ □90mm, Ø90mm ◆ 12V/24V/90V/180V
- ◆ 70W/90W/100W/120W/150W/200W/250W/300W/350W/450W/500W
- ◆ GEARED TYPE SHAFT

Specifications

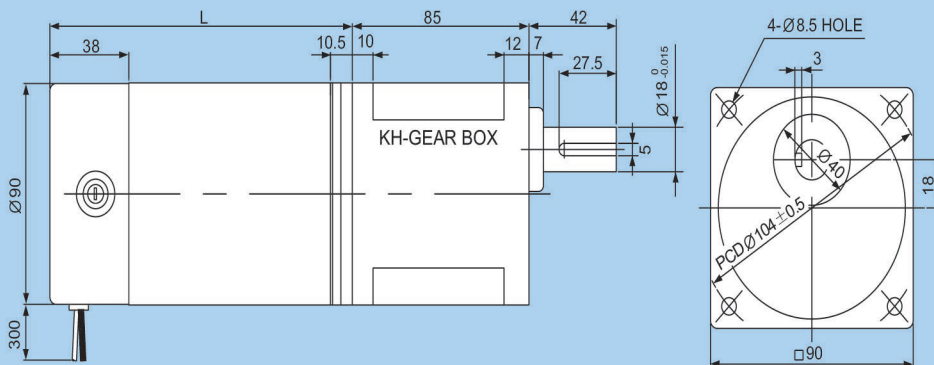
MODEL		DG95 (초강력형)					
		F012150	F012200	F024150	F024200	F024250	F024300
Rated Voltage	V	12			24		
Rated Output	W	150	200	150	200	250	300
Rated Current	A	17.6	23.5	8.9	11.7	14.7	17.9
Rated Speed	rpm	*15~1000					
Rated Torque	kgf-cm	11.9~300	15.8~300	11.9~300	15.8~300	19.7~300	23.6~300
Weight	kg	4.7	5.3	4.7	5.3	5.6	5.8

MODEL		DG95 (초강력형)							
		F090150	F090200	F090250	F090300	F180150	F180200	F180250	F180300
Rated Voltage	V	90				180			
Rated Output	W	150	200	250	300	150	200	250	300
Rated Current	A	2.3	3.1	4.0	4.7	1.2	1.6	2.0	2.3
Rated Speed	rpm	*15~1000							
Rated Torque	kgf-cm	11.9~300	15.8~300	19.7~300	23.6~300	11.9~300	15.8~300	19.7~300	23.6~300
Weight	kg	4.7	5.1	5.3	5.6	4.4	4.7	5.2	5.3

* The velocity depends on the rate of the reduction gear.

The specifications above are subject to change for enhancement of product performance, Without any prior notice.

Dimension



GEAR HEAD SIZE

GEAR RATIO	SIZE
3 / 1 ~ 200 / 1	85

L	MODEL
120.5	F012060 / F024070 / F024090 / F090100 / F180100 / F180120 / F180150
145.5	F012090 / F012120 / F024120 / F024150 / F090120 / F090150 / F180200
163.5	F012150 / F024200 / F090200 / F090250 / F180250 / F180300 / F180350
188.5	F012200 / F024250 / F024300 / F090300 / F090350 / F090450 / F180450 / F180500