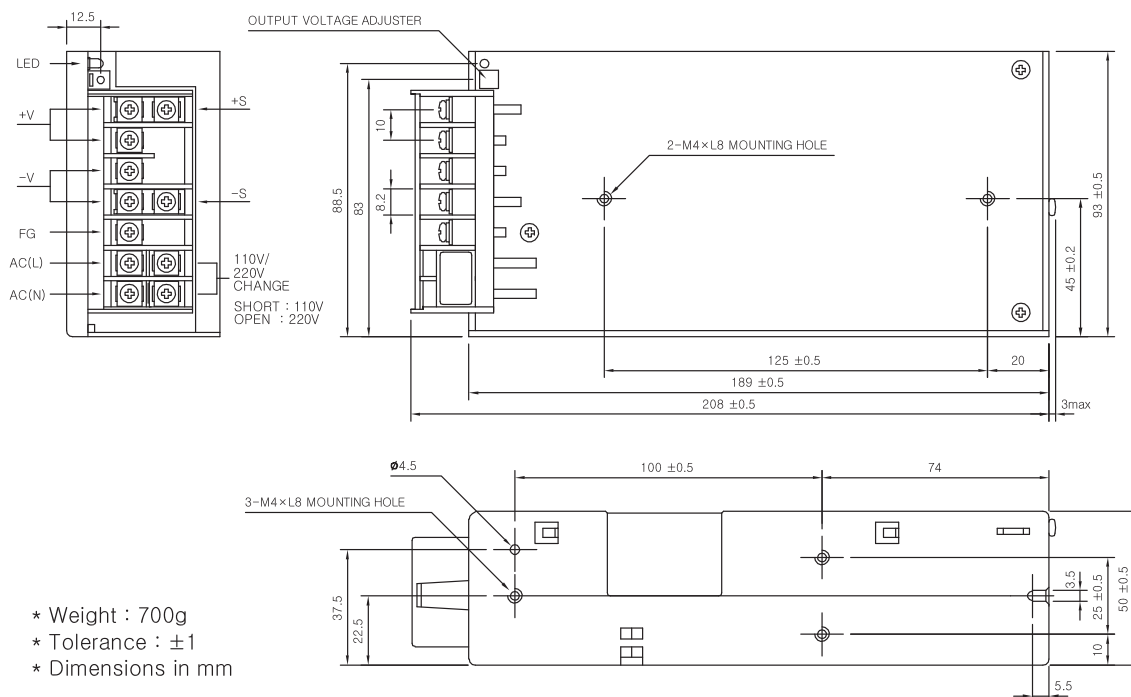




## VSF100-S SPECIFICATIONS

MODEL		VSF100-05	VSF100-09	VSF100-12	VSF100-15	VSF100-24
INPUT	VOLTAGE, FREQUENCY	AC100-120V / 200-240V (AC90 ~ 132V / 180 ~ 264V or DC240 ~ 370V), 50/60Hz (47 ~ 440Hz) User Selectable				
	CURRENT [A]	110V	2.5c(I <sub>o</sub> =100%)			
		220V	1.4c(I <sub>o</sub> =100%)			
	EFFICIENCY [%]	110V	78 typ	78 typ	80 typ	82 typ
220V						
INRUSH CURRENT		20A typ(AC IN 110V, I <sub>o</sub> =100%), 40A typ(AC IN 220V, I <sub>o</sub> =100%) at cold start.				
OUTPUT	VOLTAGE [V]	5	9	12	15	24
	CURRENT [A]	20	11	8.5	7	4.5
	REGULATION, LINE [mV]	25 Max	45 Max	60 Max	75 Max	120 Max
	REGULATION, LOAD [mV]	50 Max	90 Max	120 Max	150 Max	240 Max
	RIPPLE [mVp-p]	50 Max	90 Max	120 Max	150 Max	240 Max
	RIPPLE, NOISE [mVp-p]	100 Max	140 Max	170 Max	200 Max	290 Max
	TEMPERATURE DRIFT 0~+50°C [mV]	75 Max	135 Max	180 Max	225 Max	360 Max
	RISE TIME [ms]	500 Max (AC IN 110V/220V I <sub>o</sub> =100%)				
	HOLDING TIME [ms]	10 typ (AC IN 110V/220V I <sub>o</sub> =100%)				
PROTECTION CIRCUIT	OVER CURRENT PROTECTION	Works at over 110% of rating and recovers automatically				
	OVER VOLTAGE PROTECTION	Works at 115 ~ 140% of rating				
ELECTRICALLY ISOLATED	INPUT-OUTPUT	AC 3,000V 1 minute current 20mA, DC 500V 100MΩ (At room temperature & Humidity)				
	INPUT-CASE, FG	AC 2,000V 1 minute current 20mA, DC 500V 100MΩ (At room temperature & Humidity)				
	OUTPUT-CASE, FG	AC 500V 1 minute current 100mA, DC 500V 100MΩ (At room temperature & Humidity)				
ENVIRONMENT	OPERATING TEMP AND HUMID	-10 ~ +50°C, 20 ~ 90% RH(Non condensing)				
	STORAGE TEMP AND HUMID	-20 ~ +75°C, 20 ~ 90% RH(Non condensing)				
	VIBRATION	10 ~ 55Hz at 1G, 3 minutes period, 30 minutes along X, Y and Z axis				
	IMPACT	10G for 20ms once on each X, Y and Z axis				
SAFETY	SAFETY REGULATION	CE	-	CE	CE	CE
	LINE CONDUCTED RF VOLTAGE	Complied with FCC Part 15, VCCI-A, CISPR22-A, EN55022 - A				

## VSF100-S EXTERNAL VIEW



- \* Weight : 700g
- \* Tolerance : ±1
- \* Dimensions in mm

General Information

Switching Mode Power Supply

DC-DC Converter

Noise Filter

Solid State Relay

AC FAN Motor

Power Module

Discrete Semiconductors