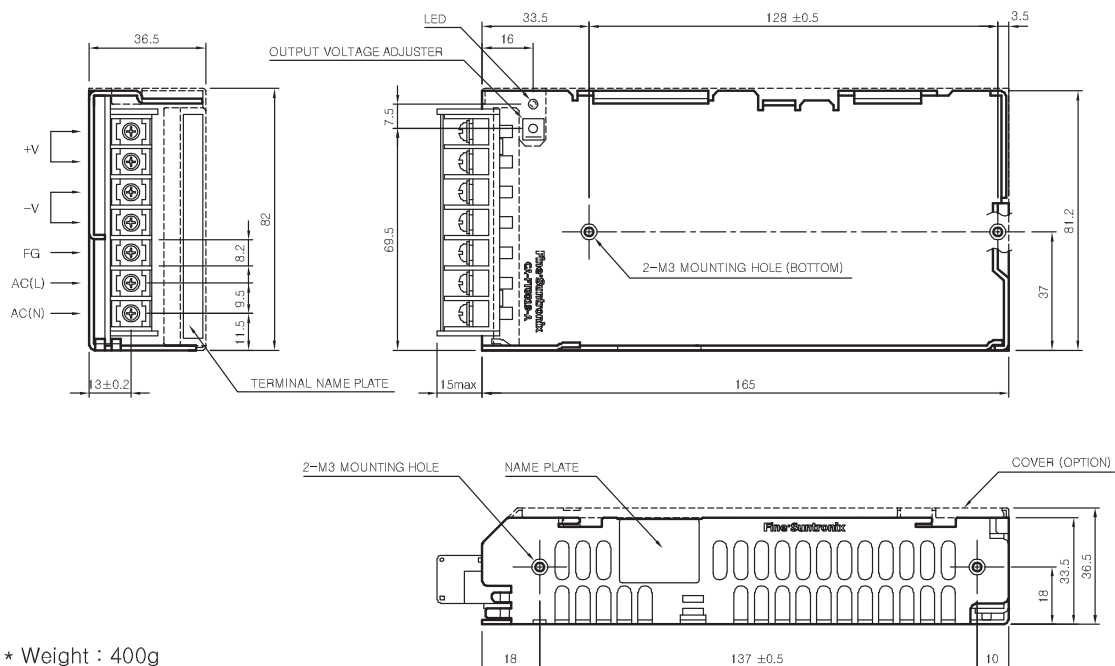


## PSF100-S SPECIFICATIONS



	MODEL	PSF100-3R3	PSF100-05	PSF100-09	PSF100-12	PSF100-15	PSF100-24	PSF100-48	
INPUT	VOLTAGE, FREQUENCY	AC100-240V (AC85 ~ 264V or DC120 ~ 370V), 50/60Hz (47~ 63Hz) Universal Input Voltage.							
	CURRENT [A]	110V	0.9(I <sub>o</sub> =100%)		1.3(I <sub>o</sub> =100%)				
		220V	0.45(I <sub>o</sub> =100%)		0.65(I <sub>o</sub> =100%)				
	POWER FACTOR	110V	0.99						
		220V	0.95						
	EFFICIENCY [%]	110V	75 typ	81 typ	81 typ	82 typ	81 typ	81 typ	82 typ
220V		80 typ	83 typ	85 typ	85 typ	85 typ	85 typ	85 typ	
INRUSH CURRENT		20A typ(AC IN 110V, I <sub>o</sub> =100%), 40A typ(AC IN 220V, I <sub>o</sub> =100%) at cold start.							
OUTPUT	VOLTAGE [V]	3.3	5	9	12	15	24	48	
	CURRENT [A]	20	20	11	8.4	6.7	4.2	2.1	
	REGULATION, LINE [mV]	25 Max	25 Max	45 Max	60 Max	75 Max	120 Max	240 Max	
	REGULATION, LOAD [mV]	50 Max	50 Max	90 Max	120 Max	150 Max	240 Max	480 Max	
	RIPPLE [mVp-p]	80 Max	80 Max	90 Max	120 Max	150 Max	240 Max	480 Max	
	RIPPLE, NOISE [mVp-p]	120 Max	120 Max	140 Max	170 Max	200 Max	290 Max	530 Max	
	TEMPERATURE DRIFT 0~+50°C [mV]	50 Max	75 Max	135 Max	180 Max	225 Max	360 Max	720 Max	
	RISE TIME [ms]	1000 Max (AC IN 85V, I <sub>o</sub> =100%)							
	HOLDING TIME [ms]	17 typ (AC IN 85V, I <sub>o</sub> =100%)							
PROTECTION CIRCUIT	OVER CURRENT PROTECTION	Works at over 105% of rating and recovers automatically							
	OVER VOLTAGE PROTECTION	Works at 115 ~ 140% of rating							
ELECTRICALLY ISOLATED	INPUT-OUTPUT	AC 3,000V 1 minute current 20mA, DC 500V 100MΩ (At room temperature & Humidity)							
	INPUT-CASE, FG	AC 2,000V 1 minute current 20mA, DC 500V 100MΩ (At room temperature & Humidity)							
	OUTPUT-CASE, FG	AC 500V 1 minute current 100mA, DC 500V 100MΩ (At room temperature & Humidity)							
ENVIRONMENT	OPERATING TEMP AND HUMID	-10 ~ +70°C(Required Derating), 20 ~ 90% RH(Non Condensing)							
	STORAGE TEMP AND HUMID	-20 ~ +75°C, 20 ~ 90% RH(Non Condensing)							
	VIBRATION	10 ~ 55Hz at 1G, 3 minutes period, 30 minutes along X, Y and Z axis							
	IMPACT	10G for 20ms, once on each X, Y and Z axis							
SAFETY	SAFETY REGULATION	UL, C-UL, CE, CB							
	LINE CONDUCTED RF VOLTAGE	Built to meet EN55022-B							
	HARMONIC ATTENUATOR	Built to meet IEC61000-3-2							

## PSF100-S EXTERNAL VIEW



- \* Weight : 400g
- \* Tolerance : ±1
- \* Dimensions in mm