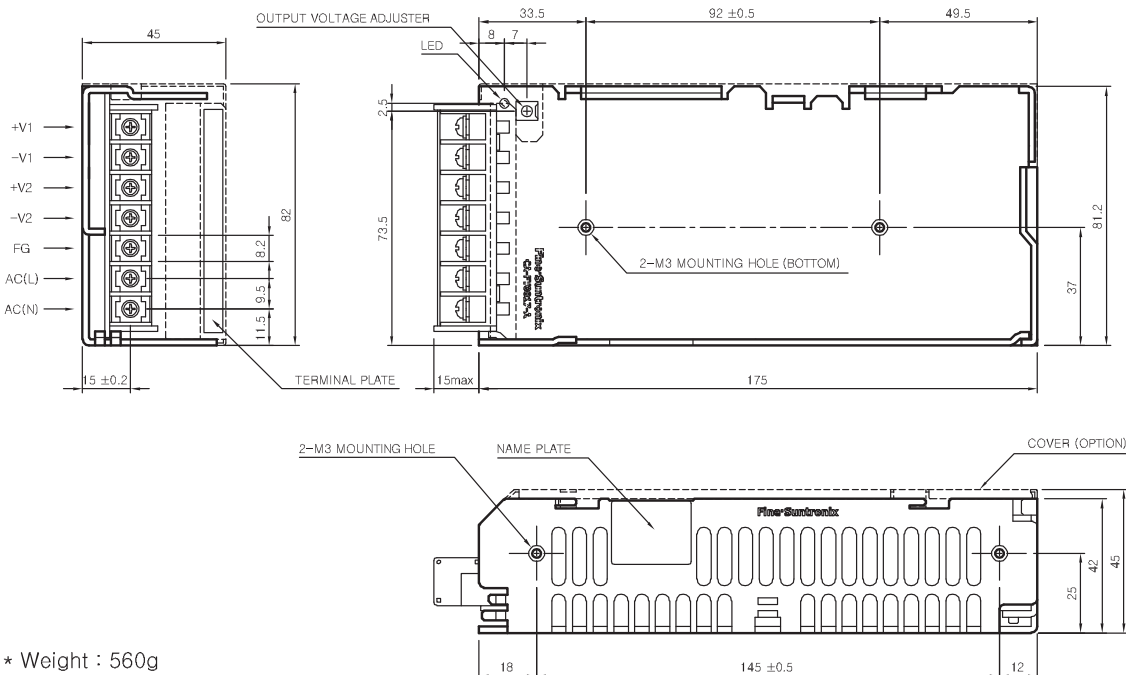


CSF100-DUAL SPECIFICATIONS



MODEL		CSF100-BDW	CSF100-BHW		
INPUT	VOLTAGE, FREQUENCY	AC85V ~ 132V / 180V ~ 264V or DC240V ~ 370V, 50/60Hz(440Hz), Auto Selectable			
	CURRENT [A]	110V	2.4 (I _o =100%)		
		220V	1.4 (I _o =100%)		
	EFFICIENCY [%]	110V	75	75	
220V					
INRUSH CURRENT		20A typ (AC IN 110V, I _o =100%), 40A typ (AC IN 220V, I _o =100%) at cold start.			
OUTPUT	VOLTAGE [V]	5	12	5	24
	CURRENT [A]	1 ~ 10	4	1 ~ 10	2
	REGULATION, LINE [mV]	25 Max	60 Max	25 Max	120 Max
	REGULATION, LOAD [mV]	50 Max	120 Max	50 Max	240 Max
	RIPPLE [mVp-p]	80 Max	120 Max	80 Max	120 Max
	RIPPLE, NOISE [mVp-p]	120 Max	150 Max	120 Max	150 Max
	TEMPERATURE DRIFT 0~+50°C [mV]	75 Max	180 Max	75 Max	360 Max
	RISE TIME [ms]	500 Max (AC IN 100V I _o =100%)			
	HOLDING TIME [ms]	17 typ (AC IN 100V I _o =100%)			
PROTECTION CIRCUIT	OVER CURRENT PROTECTION	Works at over 110% of rating and recovers automatically			
	OVER VOLTAGE PROTECTION	Works at 115 ~ 140% of rating (except for CH1)			
ELECTRICALLY ISOLATED	INPUT-OUTPUT	AC 3,000V 1 minute current 20mA, DC 500V 100MΩ (At room temperature & Humidity)			
	INPUT-FG	AC 2,000V 1 minute current 20mA, DC 500V 100MΩ (At room temperature & Humidity)			
	OUTPUT-FG	AC 500V 1 minute current 100mA, DC 500V 100MΩ (At room temperature & Humidity)			
ENVIRONMENT	OPERATING TEMP AND HUMID	-10 ~ +70°C(Required Derating), 20 ~ 90% RH (Non Condensing)			
	STORAGE TEMPAND HUMID	-20 ~ +75°C, 20 ~ 90% RH (Non condensing)			
	VIBRATION	10 ~ 55Hz at 1G, 3 minutes period, 30 minutes along X, Y and Z axis			
	IMPACT	10G for 20ms, once on each X, Y and Z axis			
SAFETY EMISSION PFHC	SAFETY REGULATION	CE, CB		CE, CB	
	LINE CONDUCTED RF VOLTAGE				

CSF100-DUAL EXTERNAL VIEW



- * Weight : 560g
- * Tolerance : ±1
- * Dimensions in mm