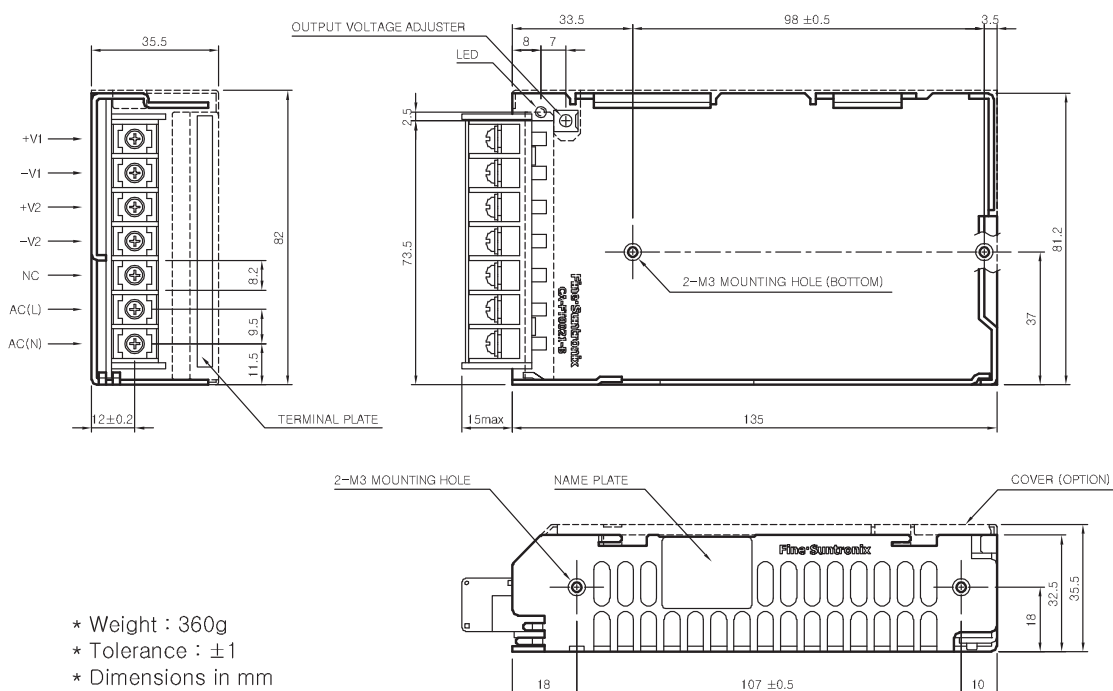


## CSF50-DUAL SPECIFICATIONS



MODEL		CSF50-BDW	CSF50-BEW	CSF50-BHW	CSF50-DDW	CSF50-EEW					
INPUT	VOLTAGE, FREQUENCY	AC100-240V (AC85 ~ 264V or DC120 ~ 370V), 50/60Hz (47 ~ 440Hz), Universal input									
	CURRENT [A]	110V	1.2A typ ( $I_o=100\%$ )								
		220V	0.7A typ ( $I_o=100\%$ )								
	EFFICIENCY [%]	110V	75 typ	76 typ	77 typ	77 typ	77 typ				
220V											
INRUSH CURRENT		20A typ (AC IN 110V, $I_o=100\%$ ), 40A typ (AC IN 220V, $I_o=100\%$ ) at cold start.									
OUTPUT	VOLTAGE [V]	5	12	5	15	5	24	12	12	15	15
	CURRENT [A]	0.5 ~ 5	2	0.5 ~ 5	1.7	0.5 ~ 5	1	0.1 ~ 2.5	1.5	0.1 ~ 2	1.5
	REGULATION, LINE [mV]	50 Max	120 Max	50 Max	150 Max	50 Max	240 Max	120 Max	120 Max	150 Max	150 Max
	REGULATION, LOAD [mV]	100 Max	240 Max	100 Max	210 Max	100 Max	480 Max	240 Max	240 Max	300 Max	300 Max
	RIPPLE [mVp-p]	80 Max	120 Max	80 Max	120 Max	80 Max	150 Max	120 Max	120 Max	120 Max	120 Max
	RIPPLE, NOISE [mVp-p]	120 Max	150 Max	120 Max	150 Max	120 Max	250 Max	150 Max	150 Max	150 Max	150 Max
	TEMPERATURE DRIFT 0~+50°C [mV]	75 Max	180 Max	75 Max	225 Max	75 Max	360 Max	180 Max	180 Max	225 Max	225 Max
	RISE TIME [ms]	1000 Max (AC IN 100V $I_o=100\%$ )									
HOLDING TIME [ms]	17 typ (AC IN 100V $I_o=100\%$ )										
PROTECTION CIRCUIT	OVER CURRENT PROTECTION	Works at over 105% of rating and recovers automatically									
	OVER VOLTAGE PROTECTION	Works at 115 ~ 140% of rating									
ELECTRICALLY ISOLATED	INPUT-OUTPUT	AC 3,000V 1 minute current 20mA, DC 500V 100MΩ (At room temperature & Humidity)									
	INPUT-FG	AC 2,000V 1 minute current 20mA, DC 500V 100MΩ (At room temperature & Humidity)									
	OUTPUT-FG	AC 500V 1 minute current 100mA, DC 500V 100MΩ (At room temperature & Humidity)									
ENVIRONMENT	OPERATING TEMP AND HUMID	-10 ~ +70°C(Required Derating), 20 ~ 90% RH (Non Condensing)									
	STORAGE TEMP AND HUMID	-20 ~ +75°C, 20 ~ 90% RH (Non condensing)									
	VIBRATION	10 ~ 55Hz at 1G, 3 minutes period, 30 minutes along X, Y and Z axis									
	IMPACT	10G for 20ms, once on each X, Y and Z axis									
SAFETY EMISSION PFHC	SAFETY REGULATION	CE, CB	CE, CB	CE, CB	CE, CB	CE, CB					
	LINE CONDUCTED RF VOLTAGE	Built to meet EN55022-B									

## CSF50-DUAL EXTERNAL VIEW



General Information

Switching Mode Power Supply

DC-DC Converter

Noise Filter

Solid State Relay

AC FAN Motor

Power Module

Discrete Semiconductors