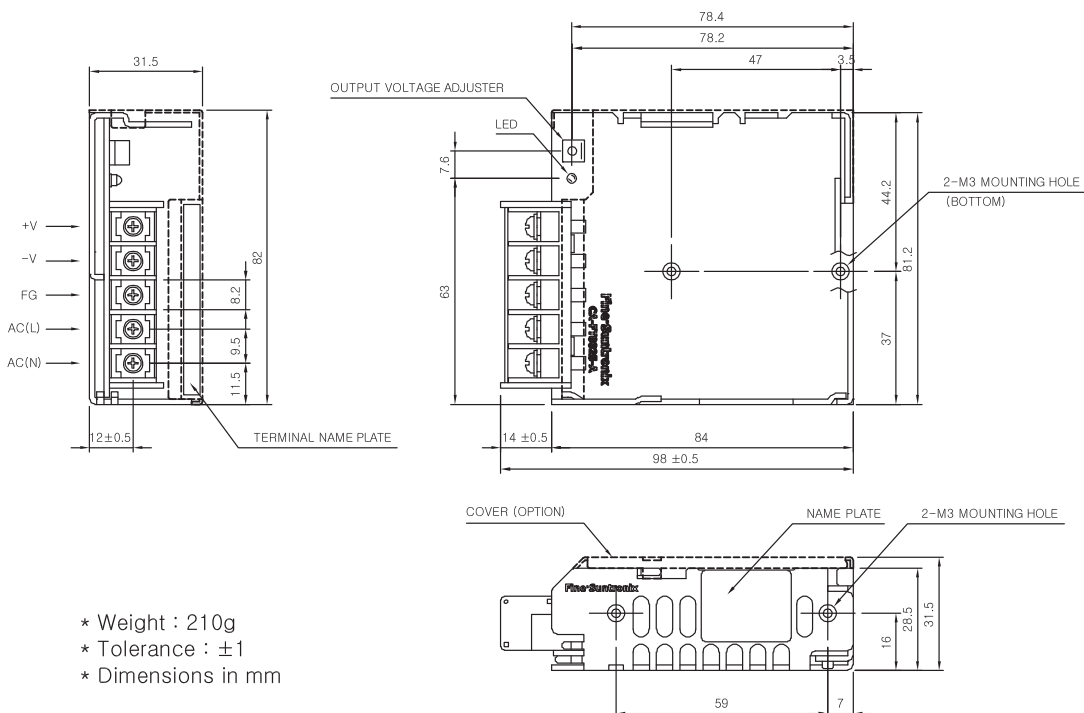


CSF30-S SPECIFICATIONS



MODEL		CSF30-3R3	CSF30-05	CSF30-09	CSF30-12	CSF30-15	CSF30-24	CSF30-48	
INPUT	VOLTAGE, FREQUENCY	AC 100-240V (AC 85 ~ 264V or DC 120 ~ 370V), 50/60Hz (47 ~ 440Hz) Universal Input							
	CURRENT [A]	110V	0.6 (I _o =100%)	0.8 (I _o =100%)					
		220V	0.3 (I _o =100%)	0.4 (I _o =100%)					
	EFFICIENCY [%]	110V	67 typ	72 typ	77 typ	78 typ	78 typ	80 typ	80 typ
220V		66 typ	73 typ	76 typ	77 typ	77 typ	80 typ	80 typ	
INRUSH CURRENT		20A typ(AC IN 110V, I _o =100%), 40A typ(AC IN 220V, I _o =100%) at cold start.							
OUTPUT	VOLTAGE [V]	3.3	5	9	12	15	24	48	
	CURRENT [A]	6	6	3.4	2.5	2	1.3	0.63	
	REGULATION, LINE [mV]	25 Max	25 Max	45 Max	60 Max	75 Max	120 Max	240 Max	
	REGULATION, LOAD [mV]	50 Max	50 Max	90 Max	120 Max	150 Max	240 Max	480 Max	
	RIPPLE [mVp-p]	80 Max	80 Max	120 Max	120 Max	120 Max	120 Max	150 Max	
	RIPPLE, NOISE [mVp-p]	120 Max	120 Max	150 Max	150 Max	150 Max	150 Max	250 Max	
	TEMPERATURE DRIFT 0~+50°C [mV]	50 Max	75 Max	135 Max	180 Max	225 Max	360 Max	720 Max	
	RISE TIME [ms]	600 Max (AC IN 100V, I _o =100%)							
	HOLDING TIME [ms]	17 typ (AC IN 100V, I _o =100%)							
PROTECTION CIRCUIT	OVER CURRENT PROTECTION	Works at over 105% of rating and recovers automatically							
	OVER VOLTAGE PROTECTION	Works at 115 ~ 140% of rating							
ELECTRICALLY ISOLATED	INPUT-OUTPUT	AC 3,000V 1 minute current 20mA, DC 500V 100MΩ (At room temperature & Humidity)							
	INPUT-CASE, FG	AC 2,000V 1 minute current 20mA, DC 500V 100MΩ (At room temperature & Humidity)							
	OUTPUT-CASE, FG	AC 500V 1 minute current 100mA, DC 500V 100MΩ (At room temperature & Humidity)							
ENVIRONMENT	OPERATING TEMP AND HUMID	-10 ~ +70°C(Required Derating), 20 ~ 90% RH(Non Condensing)							
	STORAGE TEMP AND HUMID	-20 ~ +75°C, 20 ~ 90% RH(Non Condensing)							
	VIBRATION	10 ~ 55Hz at 1G, 3 minutes period, 30 minutes along X, Y and Z axis							
	IMPACT	10G for 20ms, once on each X, Y and Z axis							
SAFETY	SAFETY REGULATION	UL, C-UL, CE, CB							
	LINE CONDUCTED RF VOLTAGE	Complied with FCC Part 15 classA, VCCI-A, CISPR22-A, EN55022-A							

CSF30-S EXTERNAL VIEW



- * Weight : 210g
- * Tolerance : ±1
- * Dimensions in mm