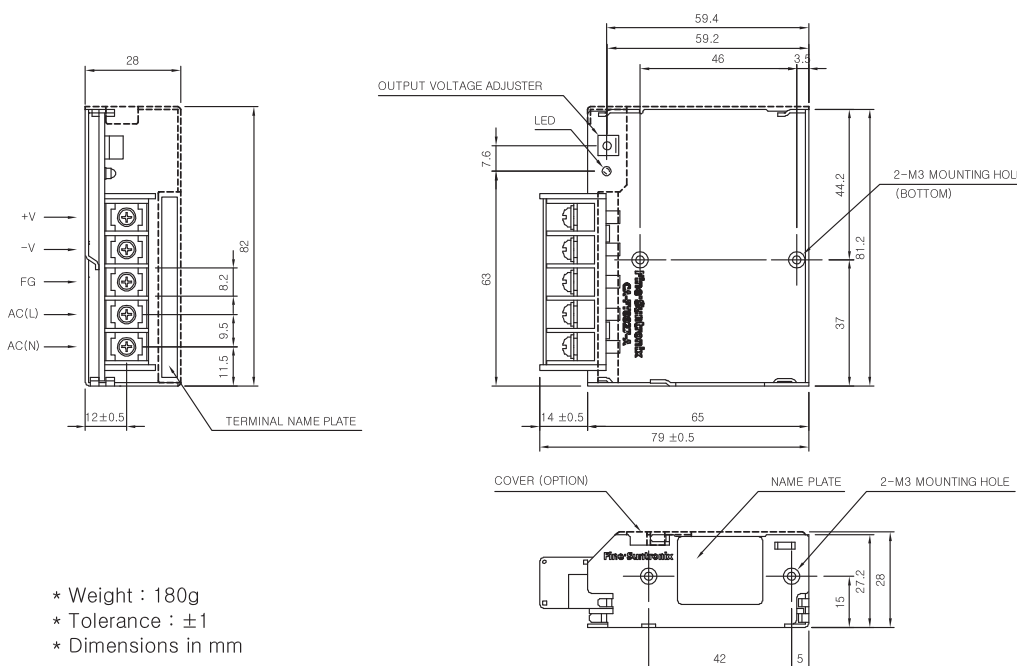


## CSF15-S SPECIFICATIONS



MODEL		CSF15-3R3	CSF15-05	CSF15-09	CSF15-12	CSF15-15	CSF15-24	
INPUT	VOLTAGE, FREQUENCY	AC100-240V (AC85 ~ 264 or DC120 ~ 370V), 50/60Hz (47 ~ 440Hz) Universal Input.						
	CURRENT [A]	110V	0.3 (I <sub>o</sub> =100%)					0.4 (I <sub>o</sub> =100%)
		220V	0.15 (I <sub>o</sub> =100%)					0.2 (I <sub>o</sub> =100%)
	EFFICIENCY [%]	110V	65 typ	75 typ	75 typ	75 typ	77 typ	77 typ
		220V	68 typ	76 typ	76 typ	76 typ	78 typ	78 typ
INRUSH CURRENT	20A typ(AC IN 110V, I <sub>o</sub> =100%), 40A typ(AC IN 220V, I <sub>o</sub> =100%) at cold start.							
OUTPUT	VOLTAGE [V]	3.3	5	9	12	15	24	
	CURRENT [A]	3	3	1.7	1.3	1	0.7	
	REGULATION, LINE [mV]	25 Max	25 Max	45 Max	60 Max	75 Max	120 Max	
	REGULATION, LOAD [mV]	50 Max	50 Max	90 Max	120 Max	150 Max	240 Max	
	RIPPLE [mVp-p]	80 Max	80 Max	120 Max	120 Max	120 Max	120 Max	
	RIPPLE, NOISE [mVp-p]	120 Max	120 Max	150 Max	150 Max	150 Max	150 Max	
	TEMPERATURE DRIFT 0~+50°C [mV]	75 Max	75 Max	135 Max	180 Max	225 Max	360 Max	
	RISE TIME [ms]	200 Max (AC IN 100V, I <sub>o</sub> =100%)						
	HOLDING TIME [ms]	17 typ (AC IN 100V, I <sub>o</sub> =100%)						
PROTECTION CIRCUIT	OVER CURRENT PROTECTION	Works at over 105% of rating and recovers automatically						
	OVER VOLTAGE PROTECTION	-						
ELECTRICALLY ISOLATED	INPUT-OUTPUT	AC 3,000V 1 minute current 20mA, DC 500V 100MΩ (At room temperature & Humidity)						
	INPUT-CASE, FG	AC 2,000V 1 minute current 20mA, DC 500V 100MΩ (At room temperature & Humidity)						
	OUTPUT-CASE, FG	AC 500V 1 minute current 100mA, DC 500V 100MΩ (At room temperature & Humidity)						
ENVIRONMENT	OPERATING TEMP AND HUMID	-10 ~ +70°C(Required Derating), 20 ~ 90% RH(Non Condensing)						
	STORAGE TEMP AND HUMID	-20 ~ +75°C, 20 ~ 90% RH(Non Condensing)						
	VIBRATION	10 ~ 55Hz at 1G, 3 minutes period, 30 minutes along X, Y and Z axis						
	IMPACT	10G for 20ms, once on each X, Y and Z axis						
SAFETY	SAFETY REGULATION	UL, C-UL, CE, CB						
	LINE CONDUCTED RF VOLTAGE	Complied with EN55022-A						

## CSF15-S EXTERNAL VIEW



- \* Weight : 180g
- \* Tolerance : ±1
- \* Dimensions in mm