

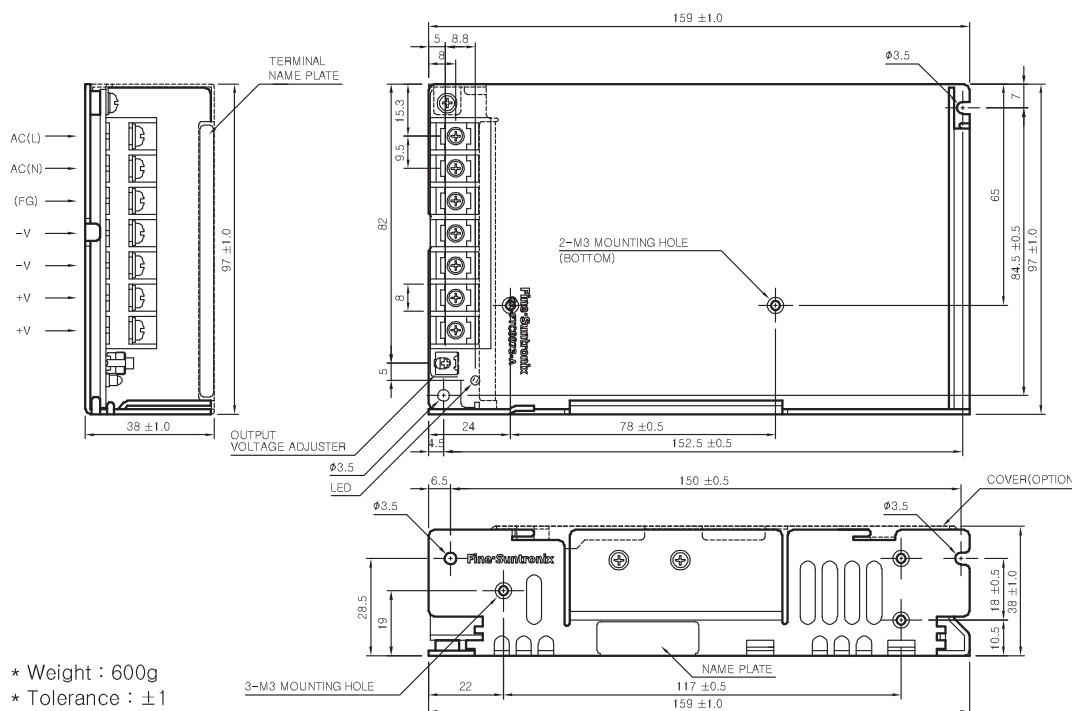
JSF100-S SPECIFICATIONS



MODEL		JSF100-3R3	JSF100-05	JSF100-09	JSF100-12	JSF100-15	JSF100-24	JSF100-48
INPUT	VOLTAGE, FREQUENCY	AC100-240V (AC 88 ~ 264V or DC 125 ~ 370V), 50/60Hz (47 ~ 440Hz) Universal input voltage						
	CURRENT [A]	110V	2.2 (I _o =100%)					
		220V	1.2 (I _o =100%)					
	EFFICIENCY [%]	110V	74 typ	79 typ	80 typ	82 typ	85 typ	86 typ
220V								
INRUSH CURRENT		30A typ(AC IN 110V, I _o =100%), 60A typ(AC IN 220V, I _o =100%) at cold start.						
OUTPUT	VOLTAGE [V]	3.3	5	9	12	15	24	48
	CURRENT [A]	20	16	11	8.5	7	4.5	2.3
	REGULATION, LINE [mV]	17 Max	25 Max	45 Max	60 Max	75 Max	120 Max	240 Max
	REGULATION, LOAD [mV]	66 Max	50 Max	90 Max	60 Max	75 Max	120 Max	240 Max
	RIPPLE, NOTE 1 [mVp-p]	50 Max	50 Max	100 Max	100 Max	100 Max	100 Max	180 Max
	RIPPLE, NOISE NOTE 1 [mVp-p]	80 Max	80 Max	120 Max	120 Max	120 Max	120 Max	200 Max
	TEMPERATURE DRIFT 0~+50°C [mV]	50 Max	75 Max	135 Max	180 Max	225 Max	360 Max	720 Max
	RISE TIME [ms]	1000 Max (AC IN 100V, I _o =100%)						
	HOLDING TIME [ms]	14 typ (AC IN 100V, I _o =100)						
PROTECTION CIRCUIT	OVER CURRENT PROTECTION	Works at over 110% of rating and recovers automatically						
	OVER VOLTAGE PROTECTION	Works at 115 ~ 140% of rating						
ELECTRICALLY ISOLATED	INPUT-OUTPUT	AC 3,000V 1 minute current 20mA, DC 500V 100MΩ (At room temperature & Humidity)						
	INPUT-CASE, FG	AC 2,000V 1 minute current 20mA, DC 500V 100MΩ (At room temperature & Humidity)						
	OUTPUT-CASE, FG	AC 500V 1 minute current 100mA, DC 500V 100MΩ (At room temperature & Humidity)						
ENVIRONMENT	OPERATING TEMP AND HUMID	-10 ~ +70°C(Required Derating), 20~90% RH(Non Condensing)						
	STORAGE TEMP AND HUMID	-20 ~ +75°C, 10 ~ 95% RH(Non Condensing)						
	VIBRATION	10 ~ 55Hz at 1G, 3 minutes period, 30 minutes along X, Y and Z axis						
	IMPACT	10G for 20ms, once on each X, Y and Z axis						
SAFETY	SAFETY REGULATION	UL, C-UL, CE, CB	UL, C-UL, CE, CB	UL, C-UL, CE, CB	UL, C-UL, CE, CB	UL, C-UL, CE, CB	UL, C-UL, CE, CB	UL, C-UL, CE, CB
	LINE CONDUCTED RF VOLTAGE	Complied with EN55011/EN55022-B, FCC-B						

NOTE1 : Ripple & Noise are measured at 20MHz of bandwidth by using a 12" twisted pair-wire terminated with a 0.1uF & 47uF parallel capacitor

JSF100-S EXTERNAL VIEW



- * Weight : 600g
- * Tolerance : ±1
- * Dimensions in mm

General Information
Switching Mode Power Supply
DC-DC Converter
Noise Filter
Solid State Relay
AC FAN Motor
Power Module
Discrete Semiconductors