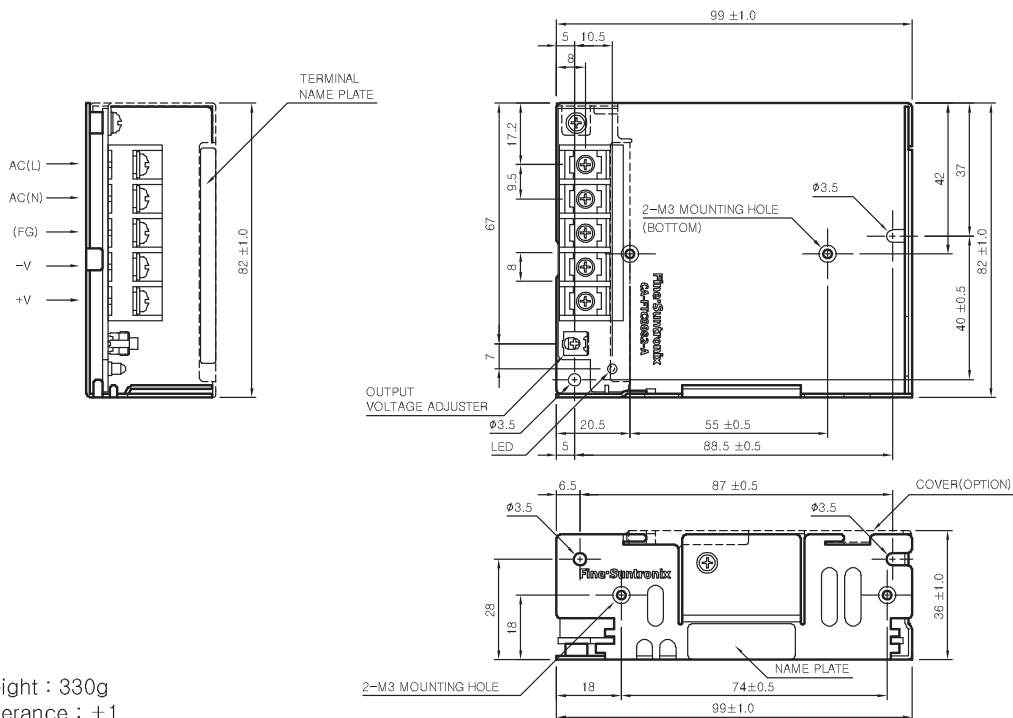


JSF35-S SPECIFICATIONS



MODEL		JSF35-3R3	JSF35-05	JSF35-09	JSF35-12	JSF35-15	JSF35-24	JSF35-48
INPUT	VOLTAGE, FREQUENCY	AC100-240V (AC88 ~ 264V or DC125 ~ 370V), 50/60Hz (47 ~ 440Hz) Universal input voltage						
	CURRENT [A]	110V	0.8 (I _o =100%)					
		220V	0.55 (I _o =100%)					
	EFFICIENCY [%]	110V	75 typ	78 typ	81 typ	82 typ	83 typ	84 typ
	220V							
INRUSH CURRENT		20A typ(AC IN 110V, I _o =100%), 40A typ(AC IN 220V, I _o =100%) at cold start.						
OUTPUT	VOLTAGE [V]	3.3	5	9	12	15	24	48
	CURRENT [A]	7	7	4	3	2.4	1.5	0.8
	REGULATION, LINE [mV]	17 Max	25 Max	45 Max	60 Max	75 Max	120 Max	240 Max
	REGULATION, LOAD [mV]	66 Max	75 Max	50 Max	60 Max	75 Max	120 Max	240 Max
	RIPPLE, NOTE 1 [mVp-p]	50 Max	50 Max	100 Max	100 Max	100 Max	100 Max	180 Max
	RIPPLE, NOISE NOTE 1 [mVp-p]	80 Max	80 Max	120 Max	120 Max	120 Max	120 Max	200 Max
	TEMPERATURE DRIFT 0~+50°C [mV]	50 Max	75 Max	135 Max	180 Max	225 Max	360 Max	720 Max
	RISE TIME [ms]	1200 Max (AC IN 100V, I _o =100%)						
	HOLDING TIME [ms]	15 typ (AC IN 100V, I _o =100%)						
PROTECTION CIRCUIT	OVER CURRENT PROTECTION	Works at over 110% of rating and recovers automatically						
	OVER VOLTAGE PROTECTION	Works at 115 ~ 140% of rating						
ELECTRICALLY ISOLATED	INPUT-OUTPUT	AC 3,000V 1 minute current 20mA, DC 500V 100MΩ (At room temperature & Humidity)						
	INPUT-CASE, FG	AC 1,500V 1 minute current 20mA, DC 500V 100MΩ (At room temperature & Humidity)						
	OUTPUT-CASE, FG	AC 500V 1 minute current 100mA, DC 500V 100MΩ (At room temperature & Humidity)						
ENVIRONMENT	OPERATING TEMP AND HUMID	-25 ~ +70°C(Required Derating), 20 ~ 90% RH(Non Condensing)						
	STORAGE TEMPAND HUMID	-40 ~ +85°C, 10 ~ 90% RH(Non Condensing)						
	VIBRATION	10~55Hz at 1G, 3 minutes period, 30 minutes along X, Y and Z axis						
	IMPACT	10G for 20ms, once on each X, Y and Z axis						
SAFETY	SAFETY REGULATION	UL, C-UL, CE, CB	UL, C-UL, CE, CB	UL, C-UL, CE, CB	UL, C-UL, CE, CB	UL, C-UL, CE, CB	UL, C-UL, CE, CB	UL, C-UL, CE, CB
	LINE CONDUCTED RF VOLTAGE	Complied with EN55011/EN55022-B, FCC-B						

JSF35-S EXTERNAL VIEW



- * Weight : 330g
- * Tolerance : ±1
- * Dimensions in mm