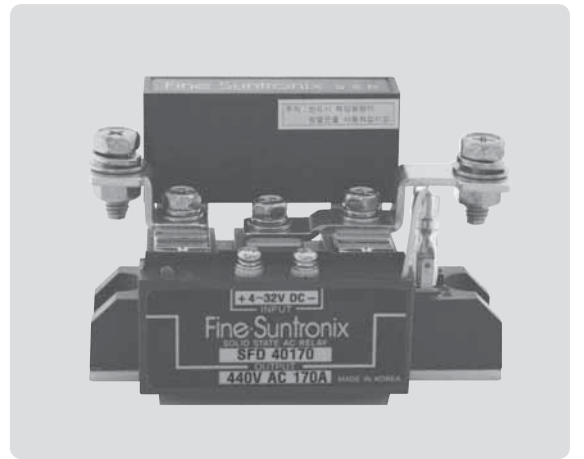


ORDERING INFORMATION

# SFD25 □ □

Series name  
Input voltage type  
Output load voltage(250V/AC)  
Output load current (RMS)

- DC Input(Trigger), AC Output
- Input voltage(Trigger) 4V~32V
- AC Load current 55A~170A
- Zero cross



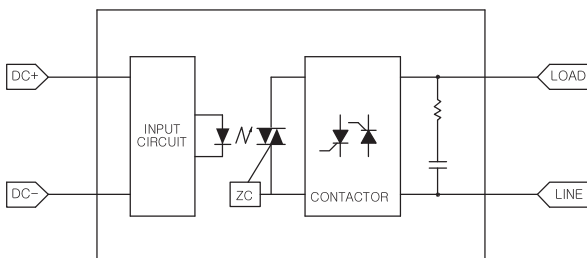
## SFD25-SERIES SPECIFICATIONS

		SFD2555	SFD2585	SFD25110	SFD25140	SFD25170	UNIT	
LOAD	Maximum load current LOAD	55	85	110	140	170	ARMS	
	Load voltage	85V ~ 250V AC						V
	Surge on-state current (½cycle, 60Hz)	1300	1750	1950	2300	2550	A	
	Maximum off-state leakage current	30 Max						mA
	Maximum on-state voltage drop	1.6						V
INPUT	Input volage	4V ~ 32V DC						V
	Input impedance	0.4						kΩ
	Drop-out voltage	2.5						V

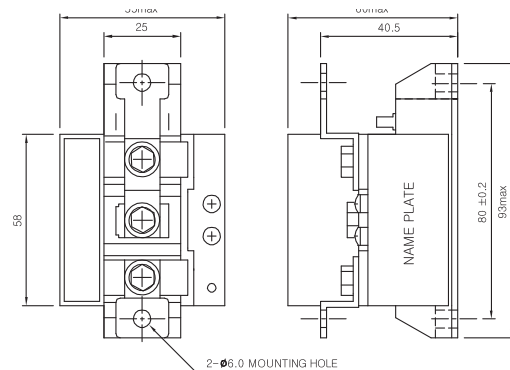
## SFD25-SERIES CHARACTERISTICS

		SFD2555	SFD2585	SFD25110	SFD25140	SFD25170	UNIT	
Operate time, max.		(½ cycle of voltage sine wave)+1 msec						mS
Release time, max.		(½ cycle of voltage sine wave)+1 msec						mS
Insulation resistance, min.		DC 500V 100MΩ between input, output and case						MΩ
Insulation voltage		2,500Vrms between input, output and case						V
Ambient temperature		-30°C ~ +80°C						°C
Storage temperature		-30°C ~ +80°C						°C
Operational method		Zero-cross (Turn-on and Turn-off)						-

## SIMPLIFIED CIRCUIT



## DIMENSION



\* Tolerance : ±1  
\* Dimensions in mm