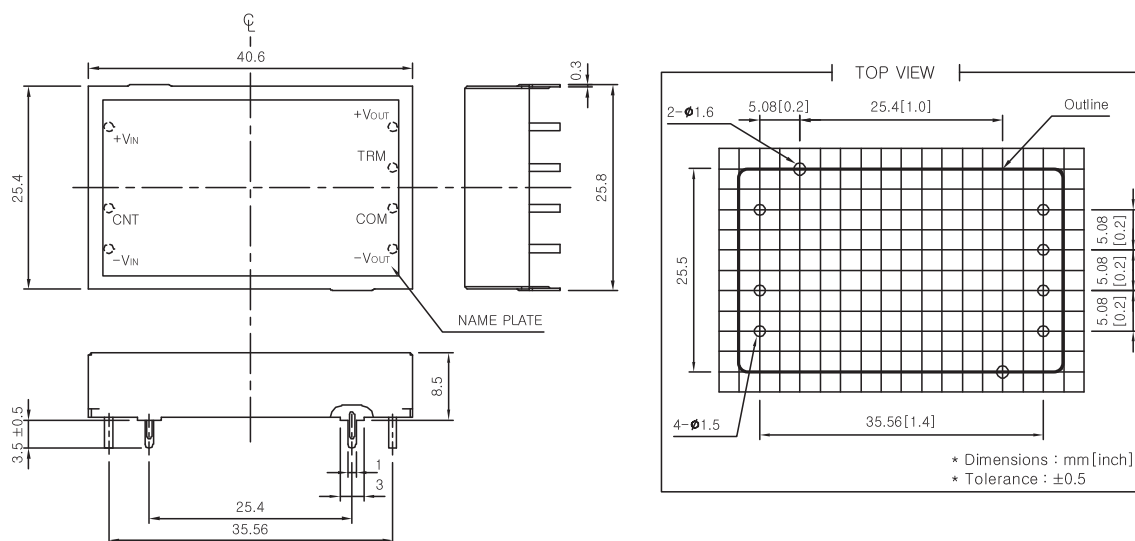


## PDC06-S SPECIFICATIONS

MODEL		PDC06-051212		PDC06-051515*		PDC06-121212		PDC06-121515*		PDC06-241212		PDC06-241515*		PDC06-481212		PDC06-481515*	
INPUT	VOLTAGE	DC 5V (4.5 ~ 9V)				DC 12V (9 ~ 18V)				DC 24V (18 ~ 36V)				DC 48V (36 ~ 72V)			
	EFFICIENCY	75%		75%		82%		82%		83%		83%		83%		83%	
OUTPUT	VOLTAGE [V]	12	-12	15	-15	12	-12	15	-15	12	-12	15	-15	12	-12	15	-15
	CURRENT [mA]	25	25	20	20	25	25	20	20	25	25	20	20	25	25	20	20
	REGULATION, LINE [mV]	40 Max	40 Max	40 Max	40 Max	40 Max	40 Max	40 Max	40 Max	40 Max	40 Max	40 Max	40 Max	40 Max	40 Max	40 Max	40 Max
	REGULATION, LOAD [mV]	600 Max	600 Max	600 Max	600 Max	600 Max	600 Max	600 Max	600 Max	600 Max	600 Max	600 Max	600 Max	600 Max	600 Max	600 Max	600 Max
	RIPPLE [mV(p-p)]	120 Max	120 Max	120 Max	120 Max	120 Max	120 Max	120 Max	120 Max	120 Max	120 Max	120 Max	120 Max	120 Max	120 Max	120 Max	120 Max
	RIPPLE, NOISE [mV(p-p)]	120 Max	120 Max	120 Max	120 Max	120 Max	120 Max	120 Max	120 Max	120 Max	120 Max	120 Max	120 Max	120 Max	120 Max	120 Max	120 Max
	TEMPERATURE DRIFT -10~+50°C [mV]	150 Max	150 Max	150 Max	150 Max	150 Max	150 Max	150 Max	150 Max	150 Max	150 Max	150 Max	150 Max	150 Max	150 Max	150 Max	150 Max
OUTPUT VOLTAGE SETTING [%]	±5% Max (Output voltage is adjustable by the external potentiometer)																
PROTECTION CIRCUIT	OVER CURRENT PROTECTION	Works at over 105% of rating and recovers automatically															
ELECTRICALLY ISOLATED	INPUT-OUTPUT	AC 500V 1 minute, current 20mA, DC500V More Than 50MΩ															
	INPUT-CASE	AC 500V 1 minute, current 20mA, DC500V More Than 50MΩ															
	OUTPUT-CASE	AC 500V 1 minute, current 20mA, DC500V More Than 50MΩ															
ENVIRONMENT	OPERATING TEMP AND HUMID	-20 ~ +70°C, 20 ~ 95%RH (Non Condensing)															
	STORAGE TEMP AND HUMID	-40 ~ +85°C, 20 ~ 95%RH (Non Condensing)															
	VIBRATION	10 ~ 55Hz at 10G, 3 minutes period for 60 minutes each along X, Y and Z axis															
	IMPACT	10G for 20ms once on each X, Y and Z axis															

\* TRM : By connecting TRM terminal to +Vout or -Vout, output voltage can be adjustable as the following range(3.3V : 2.84~3.67V, 5V : 4.3~6V, 12V : 12~15V)( ±5%)

## PDC06-S EXTERNAL VIEW



- \* Weight : 17g
- \* Tolerance : ±0.5
- \* Dimensions in mm