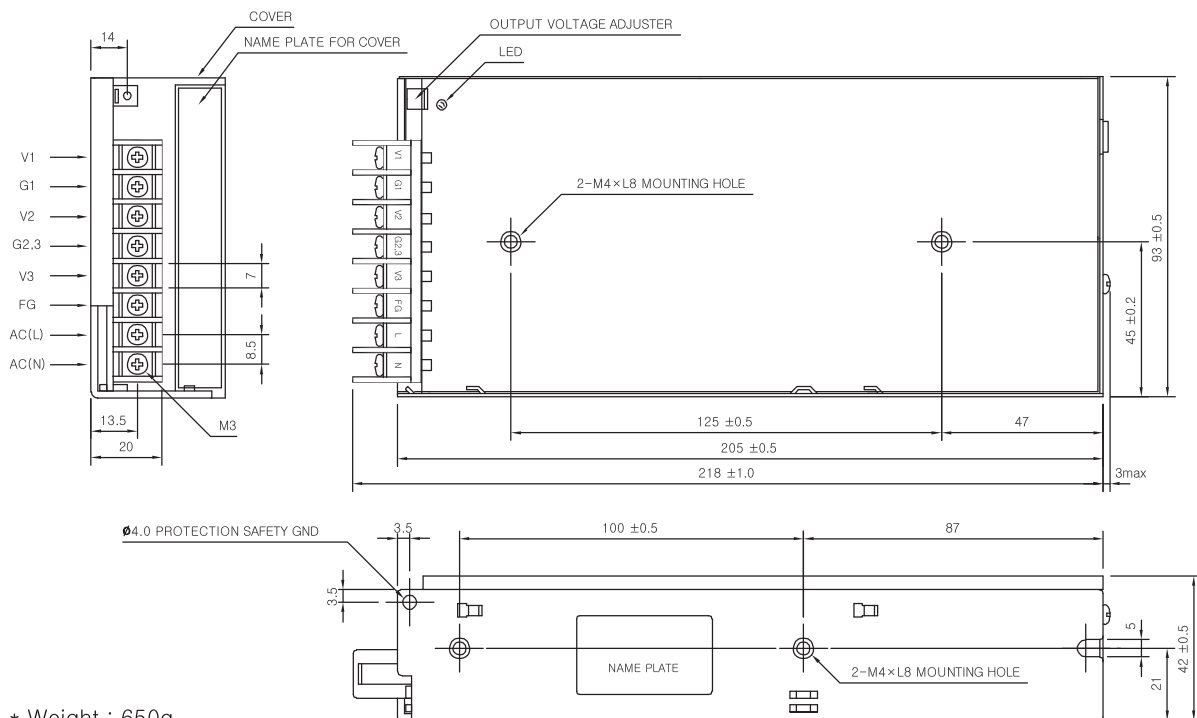


MSF100-TRIPLE SPECIFICATIONS



MODEL		MSF100-BDB	MSF100-DD			MSF100-EE			MSF100-BHD					
INPUT	VOLTAGE, FREQUENCY	AC100-120V / 200 ~ 240V (AC90 ~ 132V / 180 ~ 264V or DC240 ~ 370V), 50/60Hz (47 ~ 440Hz) User Selectable.												
	CURRENT [A]	110V	2.4 (I _c =100%)											
		220V	1.4 (I _c =100%)											
	EFFICIENCY [%]	110V	75 typ	75 typ	75 typ	75 typ	75 typ	75 typ	75 typ	75 typ	75 typ	75 typ	75 typ	
INRUSH CURRENT		20A typ (AC IN 110V, I _c =100%), 40A typ (AC IN 220V, I _c =100%) at cold start.												
OUTPUT	VOLTAGE [V]	5	12	-5	5	12	-12	5	15	-15	5	24	12	
	CURRENT [A]	2.6 ~ 13	0.6 ~ 2	0.6 ~ 2	2.6 ~ 13	0.6 ~ 2	0.3 ~ 1	2.6 ~ 13	0.45 ~ 1.5	0.3 ~ 1	1.2 ~ 6	0.6 ~ 2	0.6 ~ 2	
	REGULATIONS, LINE [mV]	100 Max	1200 Max	500 Max	100 Max	1200 Max	1200 Max	100 Max	1500 Max	1500 Max	100 Max	1200 Max	2400 Max	
	REGULATIONS, LOAD [mV]	100 Max	1200 Max	500 Max	100 Max	1200 Max	1200 Max	100 Max	1500 Max	1500 Max	100 Max	1200 Max	2400 Max	
	RIPPLE [mVp-p]	50 Max	120 Max	50 Max	50 Max	120 Max	120 Max	50 Max	150 Max	150 Max	50 Max	240 Max	120 Max	
	RIPPLE, NOISE [mVp-p]	100 Max	170 Max	100 Max	100 Max	170 Max	170 Max	100 Max	200 Max	200 Max	100 Max	290 Max	170 Max	
	TEMPERATURE DRIFT 0~+50°C [mV]	75 Max	180 Max	75 Max	75 Max	180 Max	180 Max	75 Max	225 Max	225 Max	75 Max	360 Max	180 Max	
	RISE TIME [ms]	1000 max (AC IN 110V, I _c =100%)												
	HOLDING TIME [ms]	10 typ (AC IN 110V, I _c =100%)												
PROTECTION CIRCUIT	OVER CURRENT PROTECTION	Works at over 110% of rating and recovers automatically												
	OVER VOLTAGE PROTECTION	Works at 115~ 140% of rating												
ELECTRICALLY ISOLATED	INPUT-OUTPUT	AC 3,000V 1 minute current 20mA, DC 500V 100MΩ (At room temperature & Humidity)												
	INPUT-CASE, FG	AC 2,000V 1 minute current 20mA, DC 500V 100MΩ (At room temperature & Humidity)												
	OUTPUT-CASE, FG	AC 500V 1 minute current 100mA, DC 500V 100MΩ (At room temperature & Humidity)												
ENVIRONMENT	OPERATING TEMP AND HUMID	-10 ~ +50°C, 20 ~ 90% RH(Non condensing)												
	STORAGE TEMP AND HUMID	-20 ~ +75°C, 20 ~ 90% RH(Non condensing)												
	VIBRATION	10 ~ 55Hz at 1G, 3 minutes period, 30 minutes along X, Y and Z axis												
	IMPACT	10G for 20ms once on each X, Y and Z axis												
SAFETY	SAFETY REGULATION	UL, C-UL, CE			UL, C-UL, CE			UL, C-UL, CE			UL, C-UL, CE			
	LINE CONDUCTED RF VOLTAGE	Complied with FCC Part15 and EN55022 Class A Limits												

MSF100-TRIPLE EXTERNAL VIEW



- * Weight : 650g
- * Tolerance : ±1
- * Dimensions in mm

General Information

Switching Mode Power Supply

DC-DC Converter

Noise Filter

Solid State Relay

AC FAN Motor

Power Module

Discrete Semiconductors