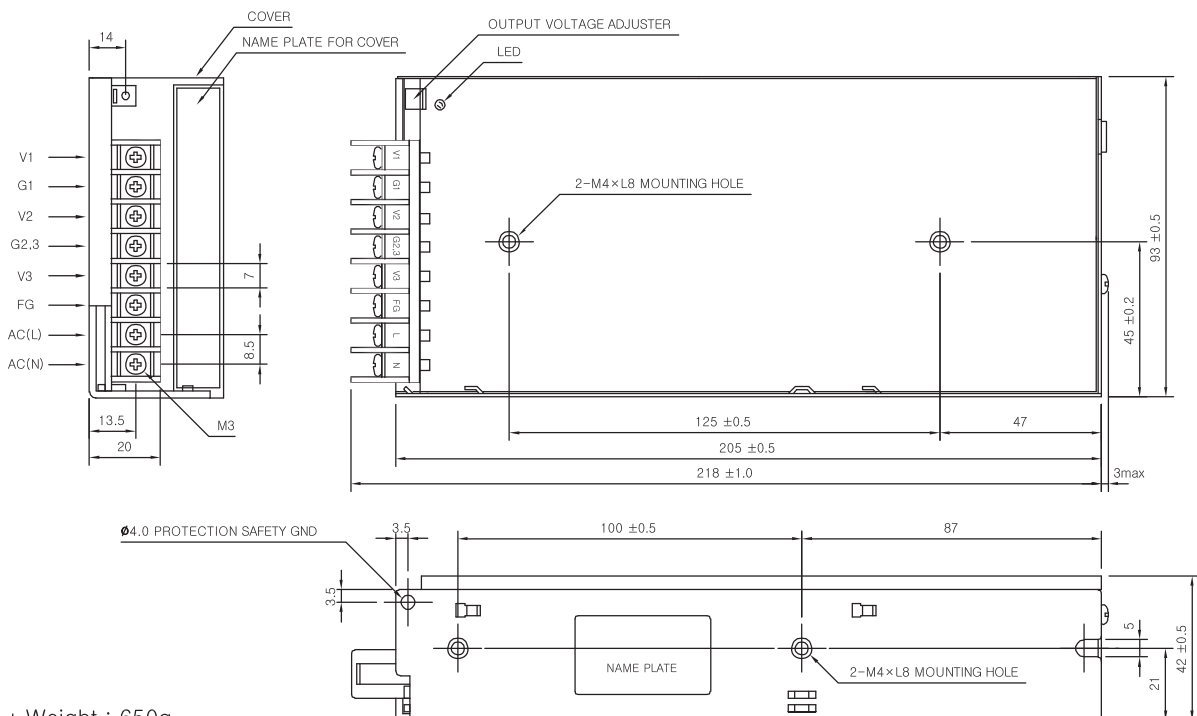


## MSF80-TRIPLE SPECIFICATIONS



MODEL		MSF80-BDB	MSF80-DD	MSF80-EE	MSF80-BHD								
INPUT	VOLTAGE, FREQUENCY	AC100-120V / 200-240V (AC90 ~ 132V / 180 ~ 264V or DC240 ~ 370V), 50/60Hz (47 ~ 440Hz) User Selectable.											
	CURRENT [A]	110V	2.0 (I <sub>c</sub> =100%)										
		220V	1.1 (I <sub>c</sub> =100%)										
	EFFICIENCY [%]	110V	75 typ	75 typ	75 typ	75 typ							
220V													
INRUSH CURRENT		20A typ (AC IN 110V, I <sub>c</sub> =100%), 40A typ(AC IN 220V, I <sub>c</sub> =100%) at cold start.											
OUTPUT	VOLTAGE [V]	5	12	-5	5	12	-12	5	15	-15	5	24	12
	CURRENT [A]	1.8 ~ 9	0.75 ~ 2.5	0.15 ~ 0.5	1.8 ~ 9	0.6 ~ 2	0.3 ~ 1	1.7 ~ 8.5	0.45 ~ 1.5	0.3 ~ 1	0.8 ~ 4	0.45 ~ 1.5	0.6 ~ 2
	REGULATIONS, LINE [mV]	100 Max	1200 Max	500 Max	100 Max	1200 Max	1200 Max	100 Max	1500 Max	1500 Max	100 Max	1200 Max	2400 Max
	REGULATIONS, LOAD [mV]	100 Max	1200 Max	500 Max	100 Max	1200 Max	1200 Max	100 Max	1500 Max	1500 Max	100 Max	1200 Max	2400 Max
	RIPPLE [mVp-p]	50 Max	120 Max	50 Max	50 Max	120 Max	120 Max	50 Max	150 Max	150 Max	50 Max	240 Max	120 Max
	RIPPLE, NOISE [mVp-p]	100 Max	170 Max	100 Max	100 Max	170 Max	170 Max	100 Max	200 Max	200 Max	100 Max	290 Max	170 Max
	TEMPERATURE DRIFT 0~+50°C [mV]	75 Max	180 Max	75 Max	75 Max	180 Max	180 Max	75 Max	225 Max	225 Max	75 Max	360 Max	180 Max
	RISE TIME [ms]	1000 max (AC IN 110V, I <sub>c</sub> =100%)											
	HOLDING TIME [ms]	10 typ (AC IN 110V, I <sub>c</sub> =100%)											
	PROTECTION CIRCUIT	OVER CURRENT PROTECTION	Works at over 110% of rating and recovers automatically										
OVER VOLTAGE PROTECTION		Works at 120~150% of rating											
ELECTRICALLY ISOLATED	INPUT-OUTPUT	AC 3,000V 1 minute current 20mA, DC 500V 100MΩ (At room temperature & Humidity)											
	INPUT-CASE, FG	AC 2,000V 1 minute current 20mA, DC 500V 100MΩ (At room temperature & Humidity)											
	OUTPUT-CASE, FG	AC 500V 1 minute current 100mA, DC 500V 100MΩ (At room temperature & Humidity)											
ENVIRONMENT	OPERATING TEMP AND HUMID	-10 ~ +50°C, 20 ~ 90% RH(Non condensing)											
	STORAGE TEMP AND HUMID	-20 ~ +75°C, 20 ~ 90% RH(Non condensing)											
	VIBRATION	10 ~ 55Hz at 1G, 3 minutes period, 30 minutes along X, Y and Z axis											
	IMPACT	10G for 20ms once on each X, Y and Z axis											
SAFETY	SAFETY REGULATION	UL, C-UL, CE		UL, C-UL, CE		UL, C-UL, CE		UL, C-UL, CE					
	LINE CONDUCTED RF VOLTAGE	Complied with FCC Part15 and EN55022 Class A Limits											

## MSF80-TRIPLE EXTERNAL VIEW



- \* Weight : 650g
- \* Tolerance : ±1
- \* Dimensions in mm