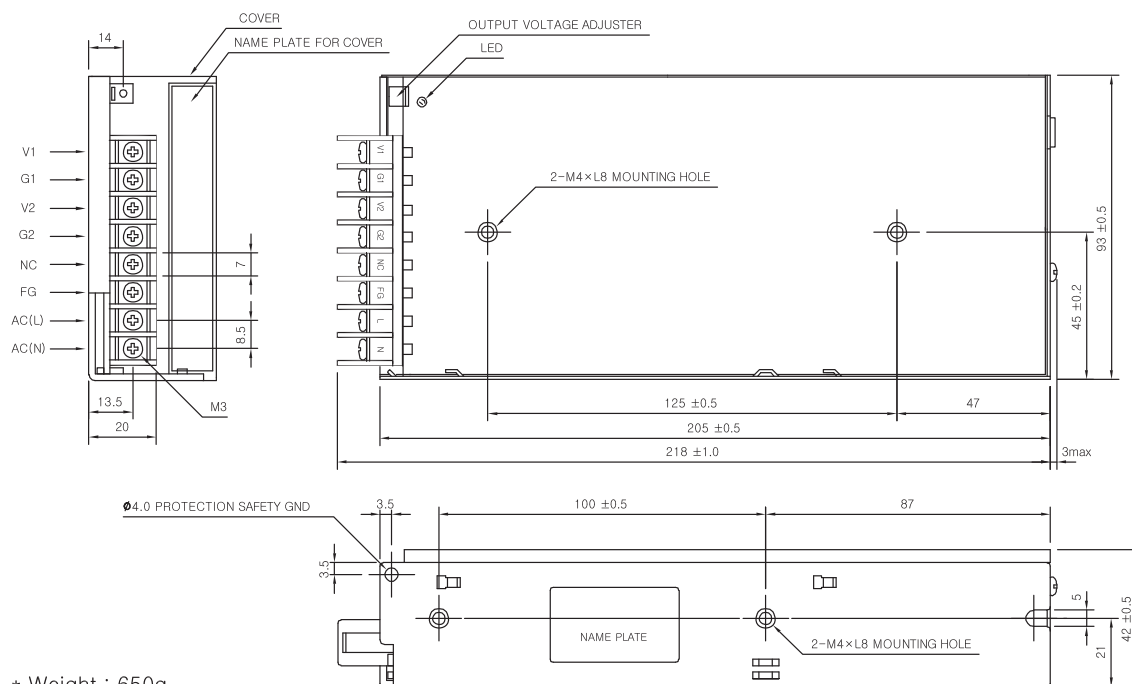


## MSF100-DUAL SPECIFICATIONS



MODEL		MSF100-BDW		MSF100-BHW		
INPUT	VOLTAGE, FREQUENCY		AC100-120V / 200-240V (AC90 ~ 132V / 180 ~ 264V or DC240 ~ 370V), 50/60Hz (47 ~ 440Hz) User Selectable.			
	CURRENT	[A]	2.4 (I <sub>o</sub> =100%)			
			1.4 (I <sub>o</sub> =100%)			
	EFFICIENCY	[%]	75 typ		75 typ	
		20A typ (AC IN 110V, I <sub>o</sub> =100%), 40A typ(AC IN 220V, I <sub>o</sub> =100%) at cold start.				
OUTPUT	VOLTAGE	[V]	5	12	5	24
	CURRENT	[A]	2 ~ 10	1.2 ~ 4	2 ~ 10	0.6 ~ 2
	REGULATIONS, LINE	[mV]	100 Max	1200 Max	100 Max	2400 Max
	REGULATIONS, LOAD	[mV]	100 Max	1200 Max	100 Max	2400 Max
	RIPPLE	[mVp-p]	50 Max	120 Max	50 Max	240 Max
	RIPPLE, NOISE	[mVp-p]	100 Max	170 Max	100 Max	290 Max
	TEMPERATURE DRIFT 0~+50°C	[mV]	75 Max	180 Max	75 Max	360 Max
	RISE TIME	[ms]	1000 max (AC IN 110V, I <sub>o</sub> =100%)			
	HOLDING TIME	[ms]	10 typ (AC IN 110V, I <sub>o</sub> =100%)			
PROTECTION CIRCUIT	OVER CURRENT PROTECTION	Works at over 110% of rating and recovers automatically				
	OVER VOLTAGE PROTECTION	Works at 120 ~ 150% of rating (CH1)				
ELECTRICALLY ISOLATED	INPUT-OUTPUT	AC 3,000V 1 minute current 20mA, DC 500V 100MΩ (At room temperature & Humidity)				
	INPUT-CASE, FG	AC 2,000V 1 minute current 20mA, DC 500V 100MΩ (At room temperature & Humidity)				
	OUTPUT-CASE, FG	AC 500V 1 minute current 100mA, DC 500V 100MΩ (At room temperature & Humidity)				
ENVIRONMENT	OPERATING TEMP AND HUMID	-10 ~ +50°C, 20 ~ 90% RH(Non condensing)				
	STORAGE TEMPAND HUMID	-20 ~ +75°C, 20 ~ 90% RH(Non condensing)				
	VIBRATION	10 ~ 55Hz at 1G, 3 minutes period, 30 minutes along X, Y and Z axis				
	IMPACT	10G for 20ms once on each X, Y and Z axis				
SAFETY	SAFETY REGULATION	UL, C-UL, CE			UL, C-UL, CE	
	LINE CONDUCTED RF VOLTAGE	Complied with FCC Part15 and EN55022 Class A Limits				

## MSF100-DUAL EXTERNAL VIEW



- \* Weight : 650g
- \* Tolerance : ±1
- \* Dimensions in mm