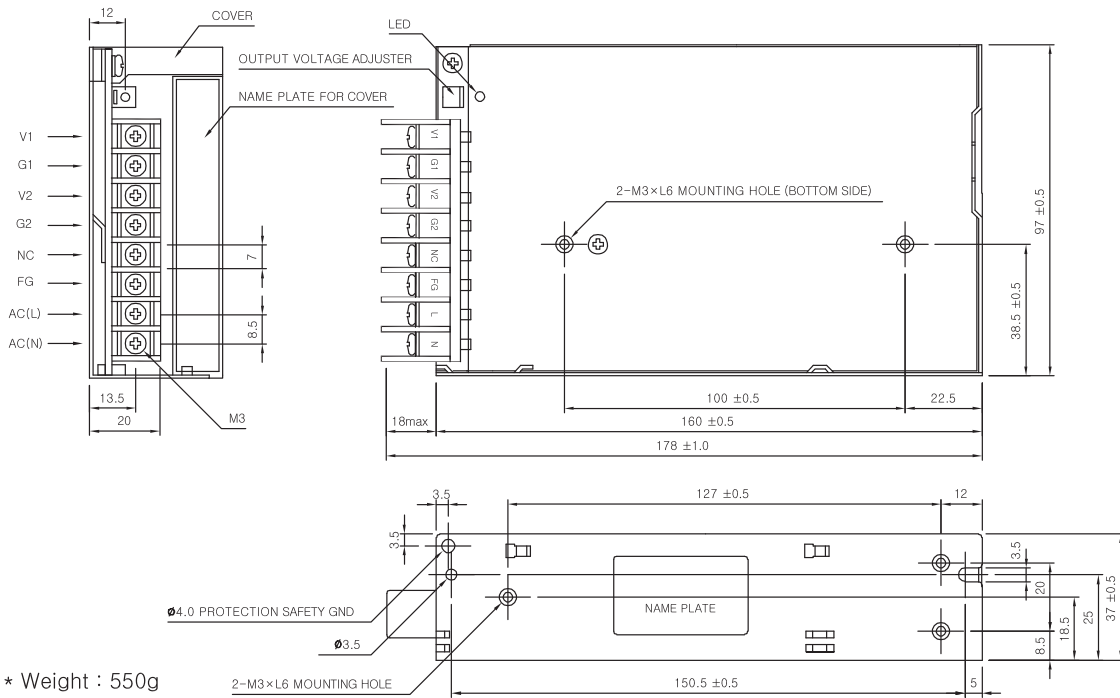


MSF50-DUAL SPECIFICATIONS



MODEL		MSF50-BDW		MSF50-BHW	
INPUT	VOLTAGE, FREQUENCY	AC100-240V (AC85 ~ 264V or DC110 ~ 370V), 50/60Hz (43 ~ 440Hz) Universal Input			
	CURRENT [A]	110V	1.5 (I _o =100%)		
		220V	0.75 (I _o =100%)		
	EFFICIENCY [%]	110V	72 typ		72 typ
220V					
INRUSH CURRENT		20A typ(AC IN 110V, I _o =100%), 40A typ(AC IN 220V, I _o =100%) at cold start.			
OUTPUT	VOLTAGE [V]	5	12	5	24
	CURRENT [A]	1.2 ~ 6	0.6 ~ 2	1.2 ~ 6	0.3 ~ 1
	REGULATIONS, LINE [mV]	100 Max	1200 Max	100 Max	2400 Max
	REGULATIONS, LOAD [mV]	100 Max	1200 Max	100 Max	2400 Max
	RIPPLE [mVp-p]	50 Max	120 Max	50 Max	240 Max
	RIPPLE, NOISE [mVp-p]	100 Max	170 Max	100 Max	290 Max
	TEMPERATURE DRIFT 0~+50°C [mV]	75 Max	180 Max	75 Max	360 Max
	RISE TIME [ms]	1000 max (AC IN 100V, I _o =100%)			
	HOLDING TIME [ms]	16 typ (AC IN 100V, I _o =100%)			
PROTECTION CIRCUIT	OVER CURRENT PROTECTION	Works at over 110% of rating and recovers automatically			
	OVER VOLTAGE PROTECTION	Works at 115 ~ 140% of rating			
ELECTRICALLY ISOLATED	INPUT-OUTPUT	AC 3,000V 1 minute current 20mA, DC 500V 100MΩ (At room temperature & Humidity)			
	INPUT-CASE, FG	AC 2,000V 1 minute current 20mA, DC 500V 100MΩ (At room temperature & Humidity)			
	OUTPUT-CASE, FG	AC 500V 1 minute current 100mA, DC 500V 100MΩ (At room temperature & Humidity)			
ENVIRONMENT	OPERATING TEMP AND HUMID	-10~ +50°C, 20 ~ 90% RH(Non condensing)			
	STORAGE TEMP AND HUMID	-20 ~ +75°C, 20 ~ 90% RH(Non condensing)			
	VIBRATION	10 ~ 55Hz at 1G, 3 minutes period, 30 minutes along X, Y and Z axis			
	IMPACT	10G for 20ms once on each X, Y and Z axis			
SAFETY	SAFETY REGULATION	UL, C-UL, CE		UL, C-UL, CE	
	LINE CONDUCTED RF VOLTAGE	Complied with FCC Part15 and EN55022 Class A Limits			

MSF50-DUAL EXTERNAL VIEW



- * Weight : 550g
- * Tolerance : ±1
- * Dimensions in mm