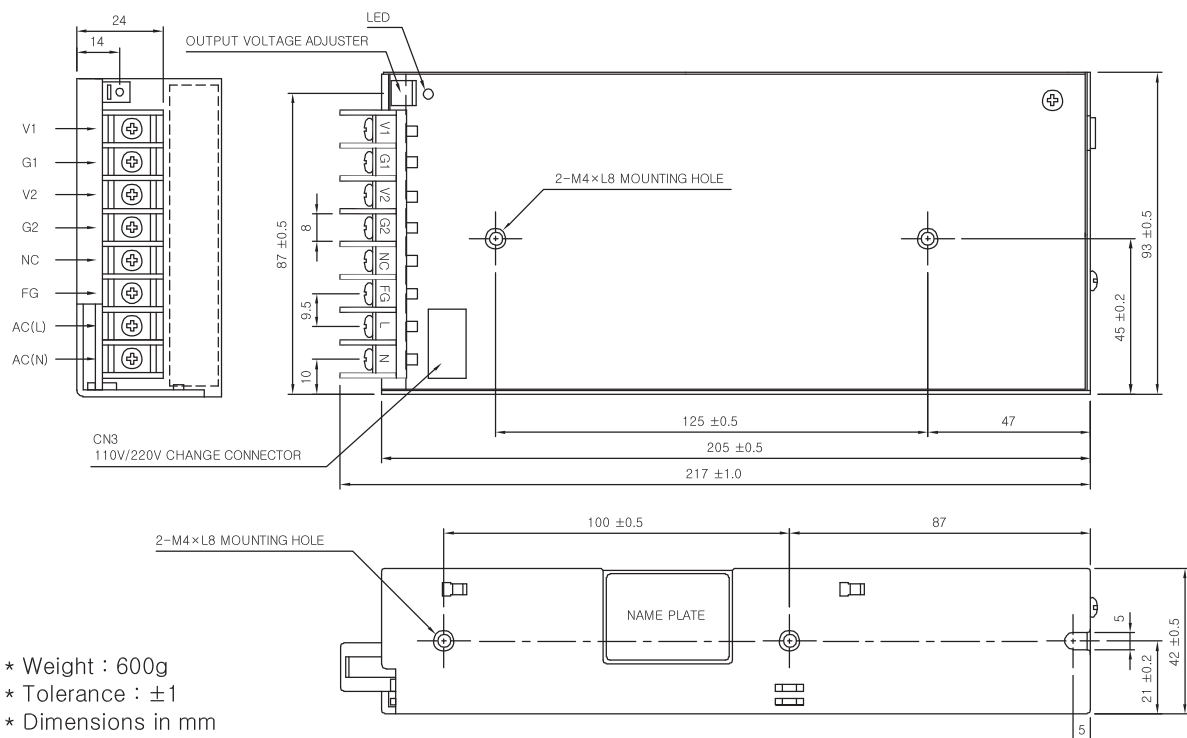




VSF100-DUAL SPECIFICATIONS

		MODEL	VSF100-BBW	VSF100-BDW	VSF100-BHW			
INPUT	VOLTAGE, FREQUENCY		AC100-120V / 200-240V (AC90 ~ 132V / 180 ~ 264V or DC240 ~ 370V), 50/60Hz (47 ~ 440Hz) User Selectable					
	CURRENT	[A]	2.4 (I _o =100%)					
		110V	2.4 (I _o =100%)					
		220V	1.4 (I _o =100%)					
	EFFICIENCY	110V	75 typ	75 typ	75 typ	75 typ	75 typ	
	220V	75 typ	75 typ	75 typ	75 typ	75 typ		
INRUSH CURRENT		20A typ(AC IN 110V, I _o =100%), 40A typ(AC IN 220V, I _o =100%) at cold start.						
OUTPUT	VOLTAGE	[V]	5	5	5	12	5	24
	CURRENT	[A]	1.5 ~ 10	5	1.5 ~ 10	4	1.5 ~ 10	2
	REGULATION, LINE	[mV]	20 Max	20 Max	20 Max	48 Max	20 Max	96 Max
	REGULATION, LOAD	[mV]	40 Max	40 Max	40 Max	100 Max	40 Max	150 Max
	RIPPLE	[mVp-p]	80 Max	80 Max	80 Max	120 Max	80 Max	240 Max
	RIPPLE, NOISE	[mVp-p]	120 Max	120 Max	120 Max	170 Max	120 Max	290 Max
	TEMPERATURE DRIFT 0~+50°C	[mV]	75 Max	75 Max	75 Max	180 Max	75 Max	360 Max
	RISE TIME	[ms]	1500 Max (AC IN 110V, I _o =100%)					
	HOLDING TIME	[ms]	10 typ (AC IN 110V, I _o =100%)					
	PROTECTION CIRCUIT	OVER CURRENT PROTECTION	Works at over 110% of rating and recovers automatically					
OVER VOLTAGE PROTECTION		Works at 115 ~ 140% of rating (CH1)						
ELECTRICALLY ISOLATED	INPUT-OUTPUT	AC 3,000V 1 minute current 20mA, DC 500V 100MΩ (At room temperature & Humidity)						
	INPUT-CASE, FG	AC 2,000V 1 minute current 20mA, DC 500V 100MΩ (At room temperature & Humidity)						
	OUTPUT-CASE, FG	AC 500V 1 minute current 100mA, DC 500V 100MΩ (At room temperature & Humidity)						
ENVIRONMENT	OPERATING TEMP AND HUMID	-10 ~ +50°C, 20 ~ 90% RH(Non condensing)						
	STORAGE TEMP AND HUMID	-20 ~ +75°C, 20 ~ 90% RH(Non condensing)						
	VIBRATION	10 ~ 55Hz at 1G, 3 minutes period, 30 minutes along X, Y and Z axis						
	IMPACT	10G for 20ms once on each X, Y and Z axis						
SAFETY	SAFETY REGULATION	-		CE		CE		
	LINE CONDUCTED RF VOLTAGE	Built to meet EN55022-B						

VSF100-DUAL EXTERNAL VIEW



- * Weight : 600g
- * Tolerance : ±1
- * Dimensions in mm