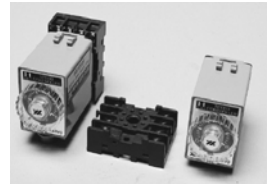


# BRAKE & SPEED CONTROL MOTOR

*NEW H-SERIES*



**OFF - BRAKE**  
**REVERSIBLE**  
**6/15w**

**Q-CON(SPEED CONTROL)**  
**& BRAKE MOTOR**  
**RHKT**

■ **PERFORMANCE DATA (DUTY : 30 Min.)**

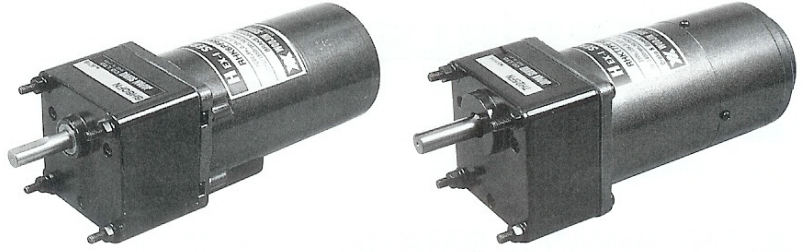
MOTOR TYPE	OUTPUT (W)	VOLTAGE (V)	FREQ. (Hz)	SPEED RANGE (rpm)	RATING TORQUE		STARTING		BRAKE		CONDENSER	
					1200rpm (gf · cm)	90rpm (gf · cm)	CURRENT (mA)	TORQUE (gf · cm)	INPUT (W)	BRAKE TORQUE (gf · cm)	(V)	(μF)
RHKT6PF6-10	6	1 φ 100	50	90~1400	320	310	240	390	6	2000	250	4.0
			60	90~1700	320	310	250	390				
RHKT6PF6-11		1 φ 110	60	90~1700	320	310	250	390	6	2000	250	3.5
RHKT6PF6-20	6	1 φ 200	50	90~1400	320	310	120	390	6	2000	450	1.0
			60	90~1700	320	310	130	390				
RHKT6PF6-22		1 φ 220	60	90~1700	320	310	130	390	6	2000	450	1.0
RHKT6PF6-1U	6	1 φ 115	60	90~1700	320	310	130	390	6	2000	450	3.5
RHKT6PF6-2C	6	1 φ 220	50	90~1400	320	310	120	390	6	2000	450	0.8
				50	90~1400	320	310	120				
RHKT7PF15-10	15	1 φ 100	50	90~1400	1000	470	590	820	6	2000	250	6.0
			60	90~1700	1000	470	520	820				
RHKT7PF15-11		1 φ 110	60	90~1700	1000	470	520	820	6	2000	250	5.0
RHKT7PF15-20	15	1 φ 200	50	90~1400	1000	470	300	820	6	2000	450	1.5
			60	90~1700	1000	470	290	820				
RHKT7PF15-22		1 φ 220	60	90~1700	1000	470	290	820	6	2000	450	1.2
RHKT7PF15-1U	15	1 φ 115	60	90~1700	1000	470	290	820	6	2000	450	5.0
RHKT7PF15-2C	15	1 φ 220	50	90~1400	1000	470	300	820	6	2000	450	1.2
				50	90~1400	1000	470	300				

- MOTOR TYPE은 GEAR HEAD直結用인 PINION軸으로 表示하였습니다.  
STRAIGHT軸의 MOTOR를 希望하시면 形式名의 PF를 S로 바꾸어 注文하십시오.
- 表示한 MOTOR는 UL 또는 CE規格을 適用한 TYPE입니다.
- CONDENSER의 外形은 PAGE F-1을 參照하십시오.
- For motor with straight shaft, please write S in place of PF in MOTOR TYPE.
- MOTOR TYPE in gray screen represents the motors with IMPEDANCE PROTECTION(RHKT6PF6) or THERMAL PROTECTION(RHKT7PF15) according to UL or CE regulation.
- For outline dimension of condenser, refer to Page F-1.

■ **WIRING DIAGRAM**

SPEED CONTROLLER의 結線방법 PAGE B-9을 참조하십시오.

- For connection of speed control & brake motor, refer to wiring diagram page B-9

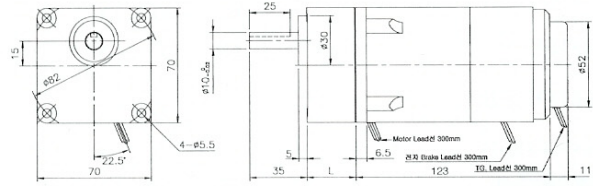
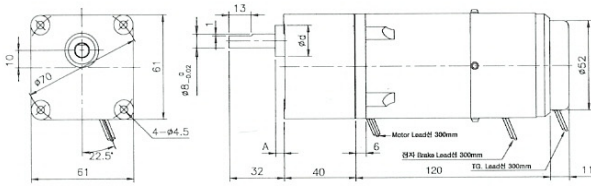


## OUTLINE DIMENSION

Fig.1 GEARED MOTOR

IHKT6PF6 + 6H□FM(6H□FB)  
WT MOTOR 1.3 kg GEAR 0.4kg

RHKT7PF15 + 7H□FM (7H□FB)  
WT MOTOR 1.5 kg GEAR 0.5



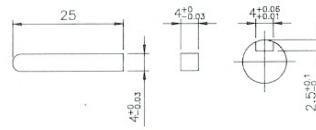
L, A, d, 重量, BOLT

TYPE	減速比	L mm	A mm	d mm	重量 Kg	BOLT
6H □ FM	1/3~1/18	30	3	20	0.3	M4×50
6H □ FB	1/25~1/180	40	3	20	0.4	M4×60

L, 重量, BOLT

TYPE	減速比	L mm	重量 Kg	BOLT
7H □ FM	1/3~1/18	30	0.5	M5×50
7H □ FB	1/25~1/180	40	0.6	M5×60

KEY SIZE



## SPEED-TORQUE CURVE

同一出力の CONTROL MOTOR 와 같습니다.

- For speed-torque characteristics, refer to speed control motor.



OFF - BRAKE

REVERSIBLE

25/40w

Q-CON(SPEED CONTROL)  
& BRAKE MOTOR

RHKT

■ PERFORMANCE DATA (DUTY : 30 Min.)

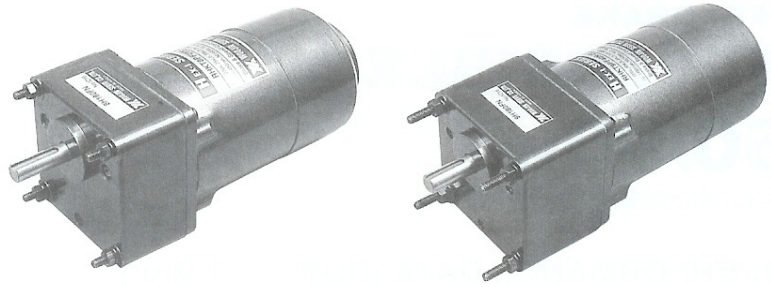
MOTOR TYPE	OUTPUT (W)	VOLTAGE (V)	FREQ. (Hz)	SPEED RANGE (rpm)	RATING TORQUE		STARTING		BRAKE		CONDENSER	
					1200rpm (gf · cm)	90rpm (gf · cm)	CURRENT (mA)	TORQUE (gf · cm)	INPUT (W)	BRAKE TORQUE (gf · cm)	(V)	(μF)
RHKT8PF25-10	25	1 φ 100	50	90~1400	1600	900	900	2100	6	2000	250	10.0
			60	90~1700	1600	900	900	2100				
RHKT8PF25-11		1 φ 110	60	90~1700	1600	900	900	2100			250	8.0
RHKT8PF25-20	25	1 φ 200	50	90~1400	1600	900	450	2100	6	2000	450	2.5
			60	90~1700	1600	900	450	2100				
RHKT8PF25-22		1 φ 220	60	90~1700	1600	900	450	2100			450	2.0
RHKT8PF25-1U	25	1 φ 115	60	90~1700	1600	900	450	2100	6	2000	450	8.0
RHKT8PF25-2C	25	1 φ 220 1 φ 240	50	90~1400	1600	900	450	2100	6	2000	450	2.0
			50	90~1400	1600	900	450	2100				
RHKT9PF40-10	40	1 φ 100	50	90~1400	3100	1000	1600	3300	10	3300	250	16.0
			60	90~1700	2500	1000	1600	3300				
RHKT9PF40-11		1 φ 110	60	90~1700	2500	1000	1600	3300	10	3300	250	16.0
RHKT9PF40-20	40	1 φ 200	50	90~1400	3100	1000	800	3300	10	3300	450	4.0
			60	90~1700	2500	1000	800	3300				
RHKT9PF40-22		1 φ 220	60	90~1700	2500	1000	800	3300	10	3300	450	3.5
RHKT9PF40-1U	40	1 φ 115	60	90~1700	2500	1000	800	3300	10	3300	450	16.0
RHKT9PF40-2C	40	1 φ 220 1 φ 240	50	90~1400	3100	1000	800	3000	10	3300	450	3.5
			50	90~1400	3100	1000	800	3000				

- MOTOR TYPE은 GEAR HEAD直結用인 PINION軸으로 表示하였습니다.  
STRAIGHT軸의 MOTOR를 希望하시면 形式名의 PF를 S로 바꾸어 注文하십시오.
- □ 表示한 MOTOR는 UL 또는 CE規格을 適用한 TP(THERMAL PROTECT) 内裝形입니다.
- CONDENSER의 外形은 PAGE F-1을 参照하십시오.
- For motor with straight shaft, please write S in place of PF in MOTOR TYPE.
- MOTOR TYPE in gray screen represents the motors with THERMAL PROTECTION according to UL or CE regulation.
- For outline dimension of condenser, refer to Page F-1.

■ WIRING DIAGRAM

SPEED CONTROLLER의 결선방법 PAGE B-9을 참조하십시오.

- For connection of speed control & brake motor, refer to wiring diagram page B-9

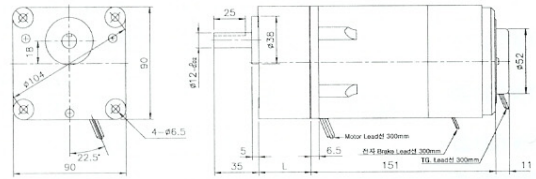
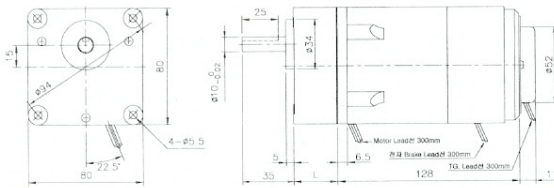


## ■ OUTLINE DIMENSION

Fig.1 GEARED MOTOR

RHKT8PF25 + 8H□FM (8H□FB)  
WT MOTOR 1.8 kg GEAR 0.5/0.6kg

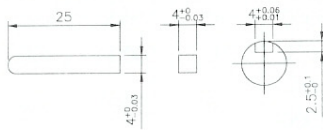
RHKT9PF40 + 9H□FM (9H□FB)  
WT MOTOR 3.0 kg GEAR 0.8/0.9kg



L, 重量, BOLT

TYPE	RATIO	L mm	重量 kg	BOLT
8H□FM	1/3 ~ 1/18	32	0.5	M5 × 60
8H□FB	1/25 ~ 1/180	42	0.6	M5 × 70

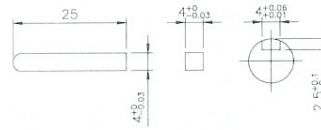
KEY SIZE



L, 重量, BOLT

TYPE	RATIO	L mm	重量 kg	BOLT
9H□FM	1/3 ~ 1/18	42	0.8	M6 × 70
9H□FB	1/25 ~ 1/180	60	0.9	M6 × 90

KEY SIZE



## ■ SPEED-TORQUE CURVE

同一出力の CONTROL MOTOR 와 같습니다.

- For speed-torque characteristics, refer to speed control motor.



**OFF - BRAKE**  
**REVERSIBLE**  
**60/90w**

**Q-CON(SPEED CONTROL)**  
**& BRAKE MOTOR**  
**RHKT**

■ **PERFORMANCE DATA (DUTY : 30 Min.)**

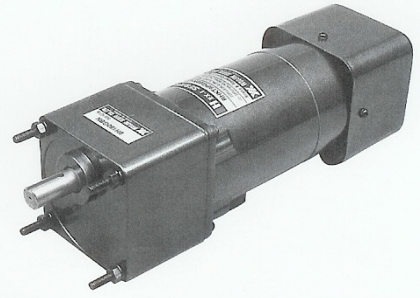
MOTOR TYPE	OUTPUT (W)	VOLTAGE (V)	FREQ. (Hz)	SPEED RANGE (rpm)	RATING TORQUE		STARTING		BRAKE		CONDENSER	
					1200rpm (gf · cm)	90rpm (gf · cm)	CURRENT (mA)	TORQUE (gf · cm)	INPUT (W)	BRAKE TORQUE (gf · cm)	(V)	(μF)
RHKT9PG60-10	60	1 φ 100	50	90~1400	4400	1200	2900	4700	10	10000	250	25.0
			60	90~1700	3700	1200	2900	4700				
RHKT9PG60-11		1 φ 110	60	90~1700	3700	1200	2800	4700	10	10000	250	20.0
RHKT9PG60-20	60	1 φ 200	50	90~1400	4400	1200	1500	4700	10	10000	450	6.0
			60	90~1700	3700	1200	1400	4700				
RHKT9PG60-22		1 φ 220	60	90~1700	3700	1200	1400	4700	10	10000	450	5.0
RHKT9PG60-1U	60	1 φ 115	60	90~1700	3700	1200	1400	4700	10	10000	450	20
RHKT9PG60-2C	60	1 φ 220	50	90~1400	4400	1200	1500	4700	10	10000	450	5.0
				50	90~1400	4400	1200	1500				
RHKT9PG90-10	90	1 φ 100	50	90~1400	6000	2500	3000	6200	10	10000	250	30.0
			60	90~1700	5500	2500	3000	6200				
RHKT9PG90-11		1 φ 110	60	90~1700	5500	2500	3000	6200	10	10000	250	25.0
RHKT9PG90-20	90	1 φ 200	50	90~1400	6000	2500	1500	6200	10	10000	450	7.0
			60	90~1700	5500	2500	1500	6000				
RHKT9PG90-22		1 φ 220	60	90~1700	5500	2500	1500	6000	10	10000	450	6.0
RHKT9PG90-1U	90	1 φ 115	60	90~1700	5500	2500	1500	6000	10	10000	450	25.0
RHKT9PG90-2C	90	1 φ 220	50	90~1400	6000	2500	1500	6000	10	10000	450	6.0
				50	90~1400	6000	2500	1500				

- MOTOR TYPE은 GEAR HEAD直結用인 PINION軸으로 表示하였습니다.  
STRAIGHT軸의 MOTOR를 希望하시면 形式名의 PF를 S로 바꾸어 注文하십시오.
- 表示한 MOTOR는 UL 또는 CE規格을 適用한 TP(THERMAL PROTECT) 内裝形입니다.
- CONDENSER의 外形은 PAGE F-1을 参照하십시오.
- For motor with straight shaft, please write S in place of PF in MOTOR TYPE.
- MOTOR TYPE in gray screen represents the motors with THERMAL PROTECTION according to UL or CE regulation.
- For outline dimension of condenser, refer to Page F-1.

■ **WIRING DIAGRAM**

SPEED CONTROLLER의 결선방법 PAGE B-9을 참조하십시오.

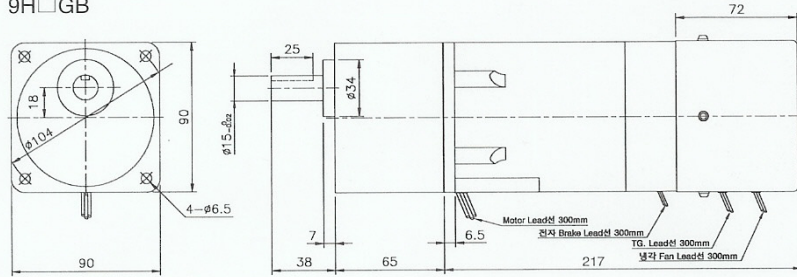
- For connection of speed control & brake motor, refer to wiring diagram page B-9



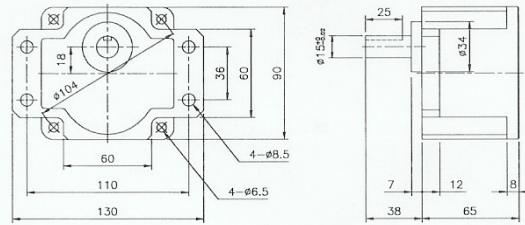
## OUTLINE DIMENSION

Fig.1 GEARED MOTOR

RHKT9PG60(90) + 9H□GB WT MOTOR 3.9 kg GEAR 1.5kg  
9H□GB



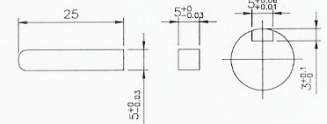
9H□GB-F



BOLT

TYPE	BOLT
9H□GB	M6×95
9H□GB-F	M6×25

KEY SIZE



## SPEED-TORQUE CURVE

同一出力の CONTROL MOTOR 와 같습니다.

· For speed-torque characteristics, refer to speed control motor.